

Lightsource Test Report

Product Information

Product Type: FD 111 220W 5000K PI60

Manufacturer: FAROS LED

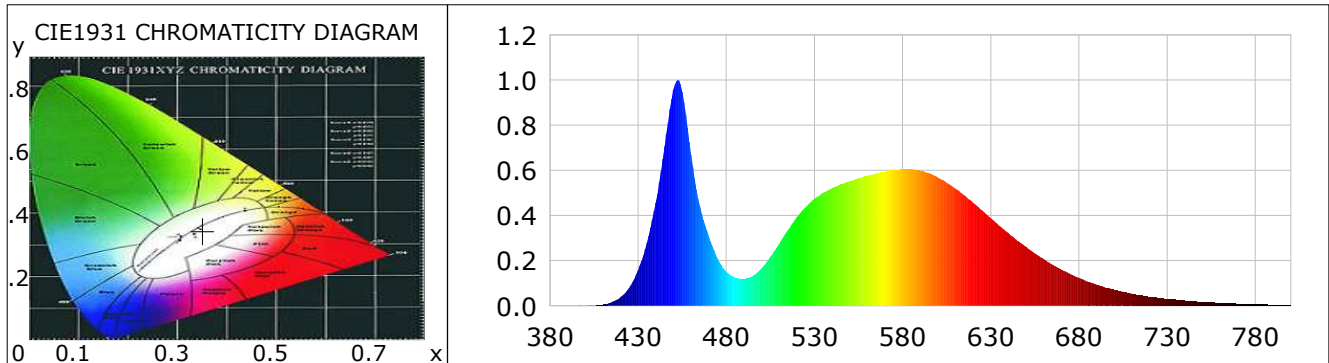
CIE Colorimetric Parameters

Chromaticity coordinates: $x=0.3510$ $y=0.3445$ $u(u')=0.2183$ $v=0.3213$ $v'=0.4820$
 CCT: $T_c=4744K$ ($duv=-0.00601$) Color Ratio: $R=0.160$ $G=0.805$ $B=0.035$
 Peak Wavelength: 452.6nm Half Bandwidth: 22.3nm
 Dominant Wavelength: 583.8nm Color Purity: 0.087
 CRI: $R_a=76.7$, $avgR(1\sim14)=67.6$, $avgR(1\sim15)=68.1$ TM30: $R_f=75$, $R_g=94$
 GAI: $GAI_BB_8=95.1$, $GAI_BB_15=102.5$, $GAI_EES=84.3$

R1 =76	R2 =83	R3 =85	R4 =75	R5 =75	R6 =74	R7 =84	R8 =63
R9 =-5	R10=56	R11=70	R12=44	R13=77	R14=91	R15=74	

Color Quality Scale: $Q_a=72.5$, $Q_f=71.6$, $Q_p=75.3$, $Q_g=92.0$

Q1 =82	Q2 =96	Q3 =63	Q4 =55	Q5 =66	Q6 =72	Q7 =78	Q8 =85
Q9 =91	Q10=76	Q11=70	Q12=71	Q13=74	Q14=67	Q15=73	



Photometric Parameters

Luminous Flux:
EEI: 0.00

Efficiency: 0.00 lm/W

Radiant Power: 75.216 W

Energy Efficiency Class: A++ (EU 874-2012)

Electric Parameters

Voltage: 0.0000V
Power Factor: 0.0000

Current: 0.0000A
Frequency: 0.00Hz

Power: 0.00W

Test Information

Scan Range: 380~800:1nm
 Stabilization Time: 0 ms ALC.: 1.0000
 Max of Signal: 45227 (3217)

Photometric Method: sphere-spectroradiometer
 Photometric Condition: Sphere diameter: 1.00m, 4PI
 CCD Integration Time: 21.54 ms

Lightsource Test Report

Product Information

Product Type: FD 111 220W 5000K P160

Manufacturer: FAROS LED

WL(nm)	PL	PE(mW/nm)	WL(nm)	PL	PE(mW/nm)	WL(nm)	PL	PE(mW/nm)
380	0.0008	0.5638	525	0.4363	298.4069	670	0.1613	110.3161
385	0.0016	1.1048	530	0.4733	323.7150	675	0.1407	96.2162
390	0.0008	0.5610	535	0.5010	342.6985	680	0.1242	84.9701
395	0.0013	0.8581	540	0.5218	356.9255	685	0.1076	73.6036
400	0.0013	0.9031	545	0.5402	369.5184	690	0.0939	64.2188
405	0.0026	1.7913	550	0.5527	378.0465	695	0.0817	55.8671
410	0.0065	4.4213	555	0.5659	387.0775	700	0.0712	48.7057
415	0.0163	11.1416	560	0.5764	394.2802	705	0.0617	42.2151
420	0.0383	26.1985	565	0.5870	401.4724	710	0.0538	36.8081
425	0.0795	54.3513	570	0.5934	405.8757	715	0.0462	31.5792
430	0.1582	108.2066	575	0.6026	412.1946	720	0.0405	27.6900
435	0.2822	193.0169	580	0.6063	414.6832	725	0.0345	23.5689
440	0.4584	313.5240	585	0.6051	413.9053	730	0.0304	20.8102
445	0.7076	483.9934	590	0.5990	409.6965	735	0.0270	18.4730
450	0.9577	655.0556	595	0.5878	402.0317	740	0.0230	15.6980
455	0.9489	649.0237	600	0.5686	388.8861	745	0.0196	13.3881
460	0.6699	458.2015	605	0.5457	373.2770	750	0.0169	11.5853
465	0.4402	301.1011	610	0.5187	354.7706	755	0.0147	10.0885
470	0.3098	211.9014	615	0.4897	334.9818	760	0.0130	8.9108
475	0.2113	144.4984	620	0.4560	311.9247	765	0.0109	7.4861
480	0.1511	103.3687	625	0.4237	289.7878	770	0.0098	6.6938
485	0.1259	86.1352	630	0.3885	265.7094	775	0.0086	5.8804
490	0.1203	82.3094	635	0.3533	241.6754	780	0.0070	4.8210
495	0.1330	90.9628	640	0.3220	220.2423	785	0.0061	4.1472
500	0.1670	114.1990	645	0.2893	197.8581	790	0.0055	3.7653
505	0.2176	148.8558	650	0.2612	178.6671	795	0.0050	3.3882
510	0.2759	188.7140	655	0.2324	158.9377	800	0.0042	2.9034
515	0.3353	229.3409	660	0.2071	141.6865			
520	0.3934	269.1052	665	0.1824	124.7880			

Condition: Tx:27.8°C, Ti:0.0°C, R.H.:60%
Test Lab: FAROS LED Lab
Operator: Lab

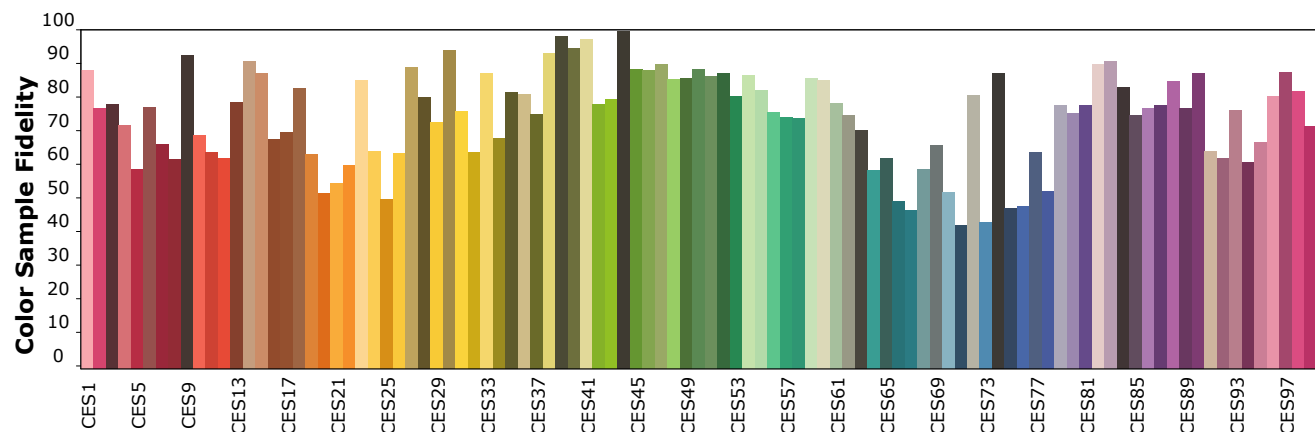
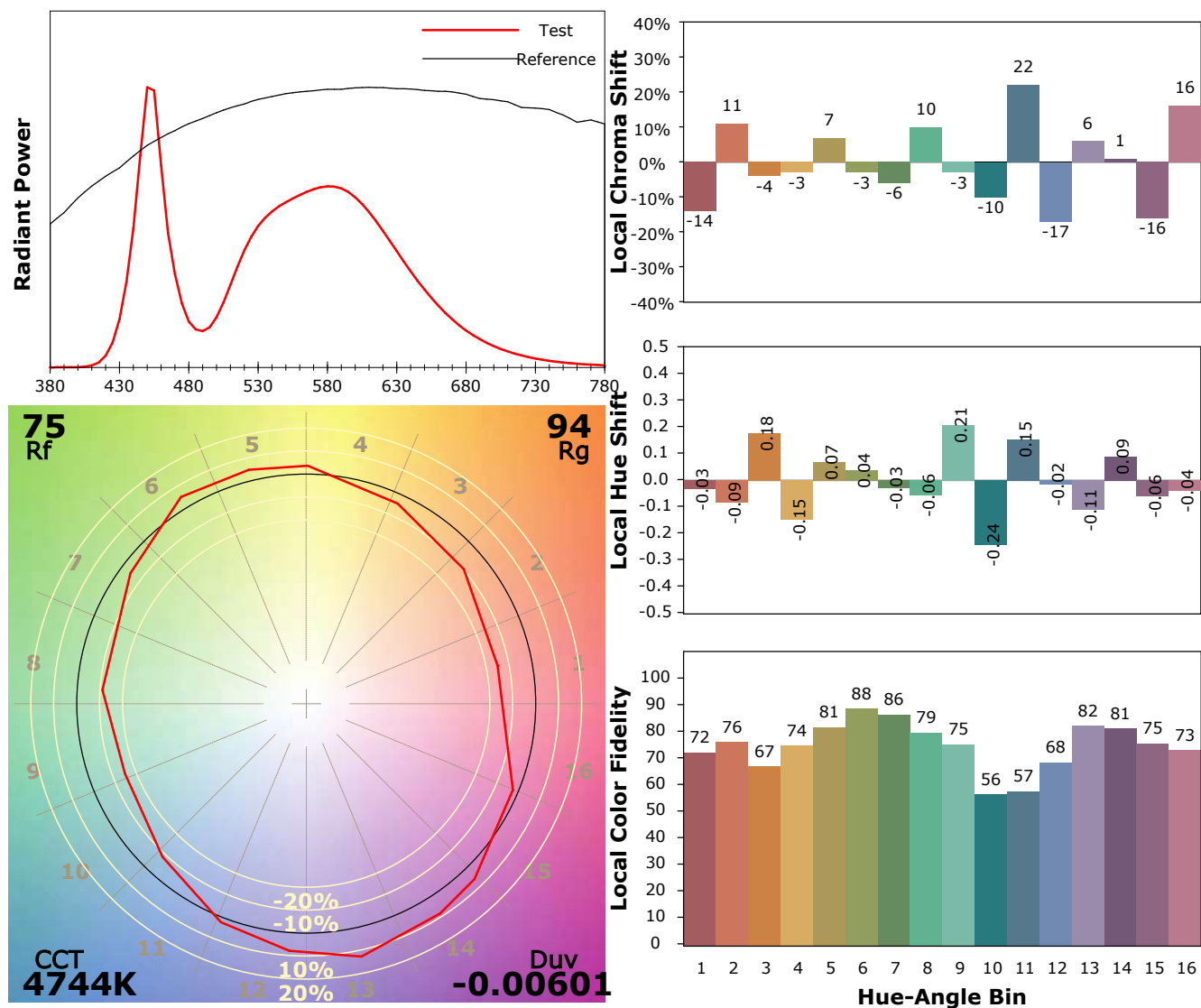
Test Device: Lisun LMS-9000A(Plus)
Test Time: 2021-07-26 11:56:51
Inspector:

IES TM-30-18 Color Rendition Report

Product Information

Product Type: FD 111 220W 5000K PI60

Manufacturer: FAROS LED



Condition: Tx:27.8°C, Ti:0.0°C, R.H.:60%

Test Lab: FAROS LED Lab

Operator: Lab

Test Device: Lisun LMS-9000A(Plus)

Test Time: 2021-07-26 11:56:51

Inspector: