

Report No.:

Test Time: 09.04.2021 14:38

Luminaire Property

Luminaire Manufacturer:

Lamp Catalog: FS 595 36W 4000K OPAL

Luminous Length (mm): 595

Luminous Height (mm): 50

Current: 0.166 A

Power Factor: 0.970

Luminous Width (mm): 595

Voltage: 221.4 V

Power: 35.86 W

Photometric Results

CIE Class: Direct

Measurement Flux: 3352.4 lm

Downward Ratio: 99%

Field Angle(C0/C180,C90/C270,C45/C225,C135/315): 165.0, 164.6, 164.9, 164.7

Beam Angle(C0/C180,C90/C270,C45/C225,C135/315): 112.8, 112.5, 112.6, 112.6

Luminaire Efficacy Rating (LER): 93.53

Max. Intensity: 1152.4 cd

S/MH(C0/C180): 1.25

Total Rated Lamp Lumens: 3352.4 lm

Efficiency: 100%

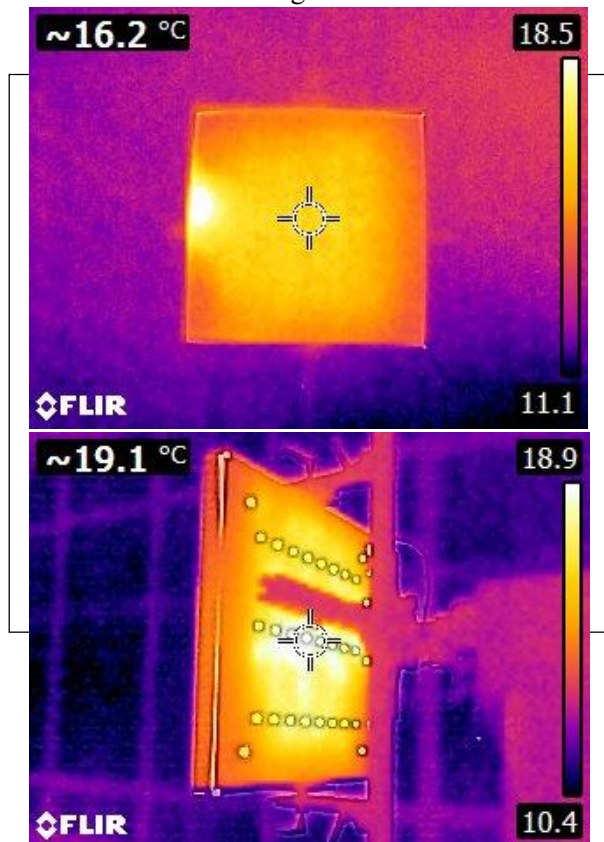
Upward Ratio: 1%

Central Intensity: 1150.62 cd

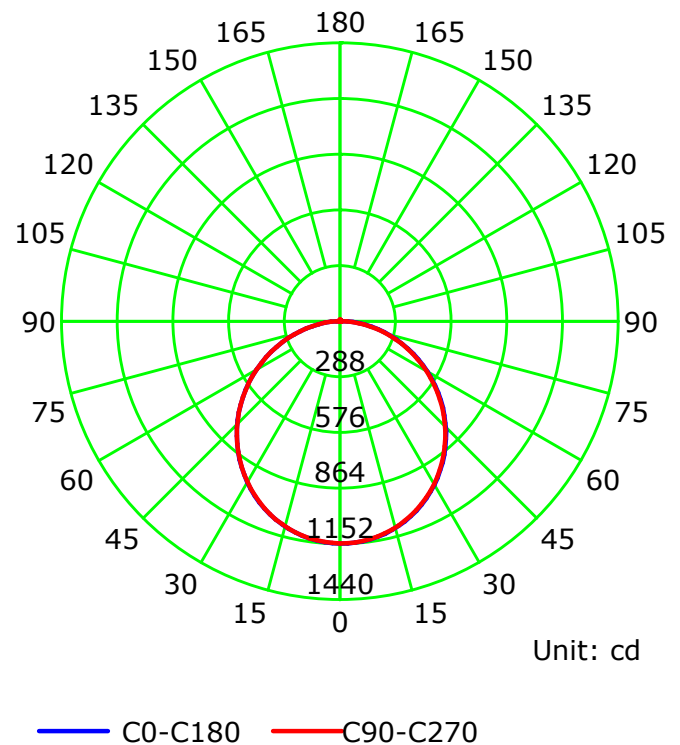
Pos of Max. Intensity: H157.5 V0

S/MH(C90/C270): 1.25

Termogramma



Luminous Intensity Distribution Curve



C Plane (°):0.0-360.0: 22.5

Test Lab:

Test Type: TYPE C

Temperature:

Operator:

Gamma Plane (°):0.0-180.0:2.0

Test Device: LSG-1800B

Distance: 12.735 m

Humidity:

Inspector:

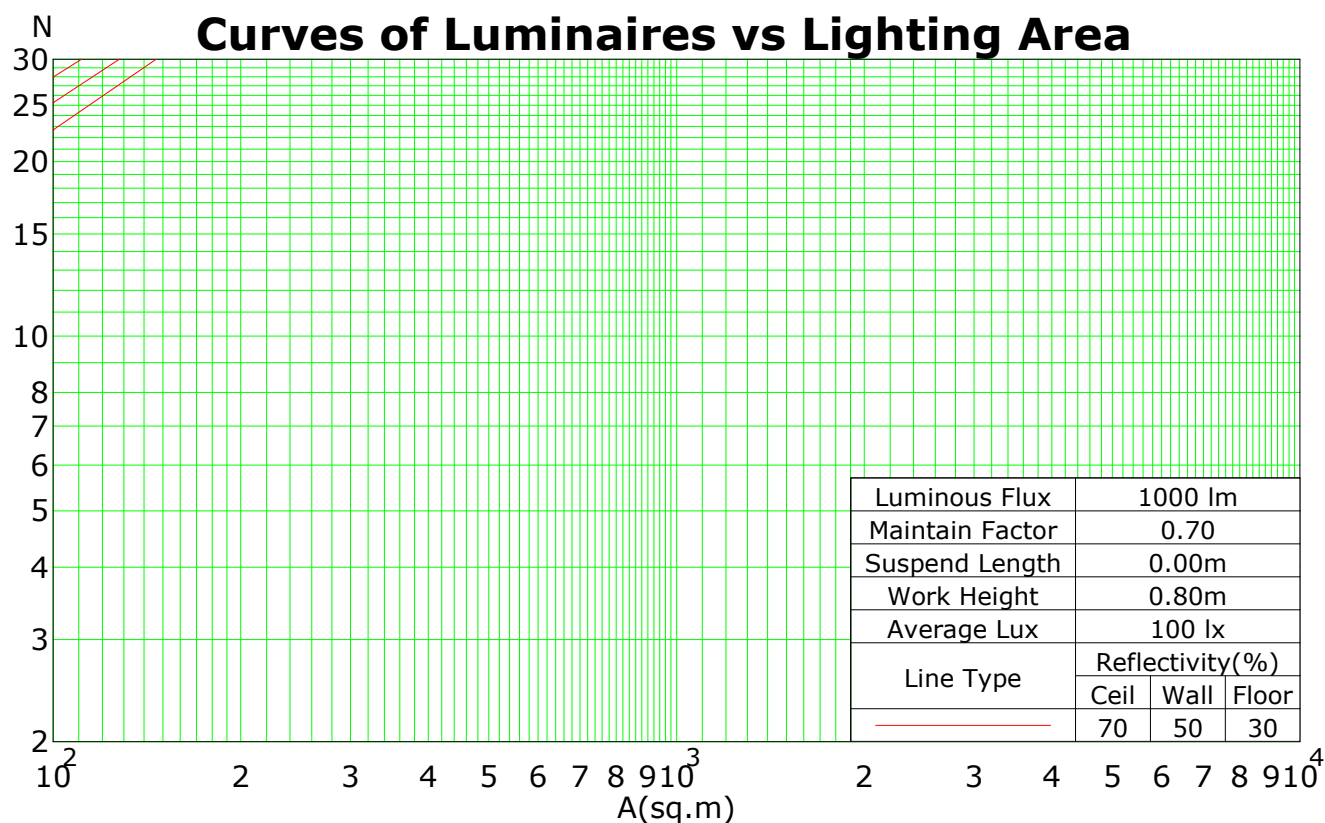
Coefficients Of Utilization - Zonal Cavity Method

RC	0.8	0.8	0.8	0.8	0.7	0.7	0.7	0.7	0.5	0.5	0.5	0.3	0.3	0.3	0.1	0.1	0.1	0
RW	0.7	0.5	0.3	0.1	0.7	0.5	0.3	0.1	0.5	0.3	0.1	0.5	0.3	0.1	0.5	0.3	0.1	0
RCR	RF = 0.2																	
0	119	119	119	119	116	116	116	116	111	111	111	106	106	106	102	102	102	99
1	108	103	99	95	105	101	97	93	97	93	90	93	90	87	89	87	85	82
2	98	90	83	77	95	88	81	76	84	79	74	81	76	72	78	74	70	68
3	89	79	70	64	87	77	69	63	74	67	62	71	65	61	68	64	60	57
4	82	70	61	54	79	68	60	53	66	58	53	63	57	52	61	55	51	49
5	75	62	53	46	73	61	52	46	59	51	45	57	50	45	55	49	44	42
6	69	56	47	40	67	55	46	40	53	45	40	51	44	39	50	44	39	37
7	64	51	42	36	63	50	41	35	48	41	35	47	40	35	45	39	34	32
8	60	46	38	32	58	45	37	32	44	37	31	43	36	31	42	35	31	29
9	56	42	34	28	54	42	34	28	41	33	28	39	33	28	38	32	28	26
10	52	39	31	26	51	39	31	26	38	30	26	37	30	25	36	30	25	24

Spacing Criteria (0-180): 1.25

Spacing Criteria (90-270): 1.25

Spacing Criteria (Diagonal): 1.37



C Plane (°):0.0-360.0: 22.5

Test Lab:

Test Type: TYPE C

Temperature:

Operator:

Gamma Plane (°):0.0-180.0:2.0

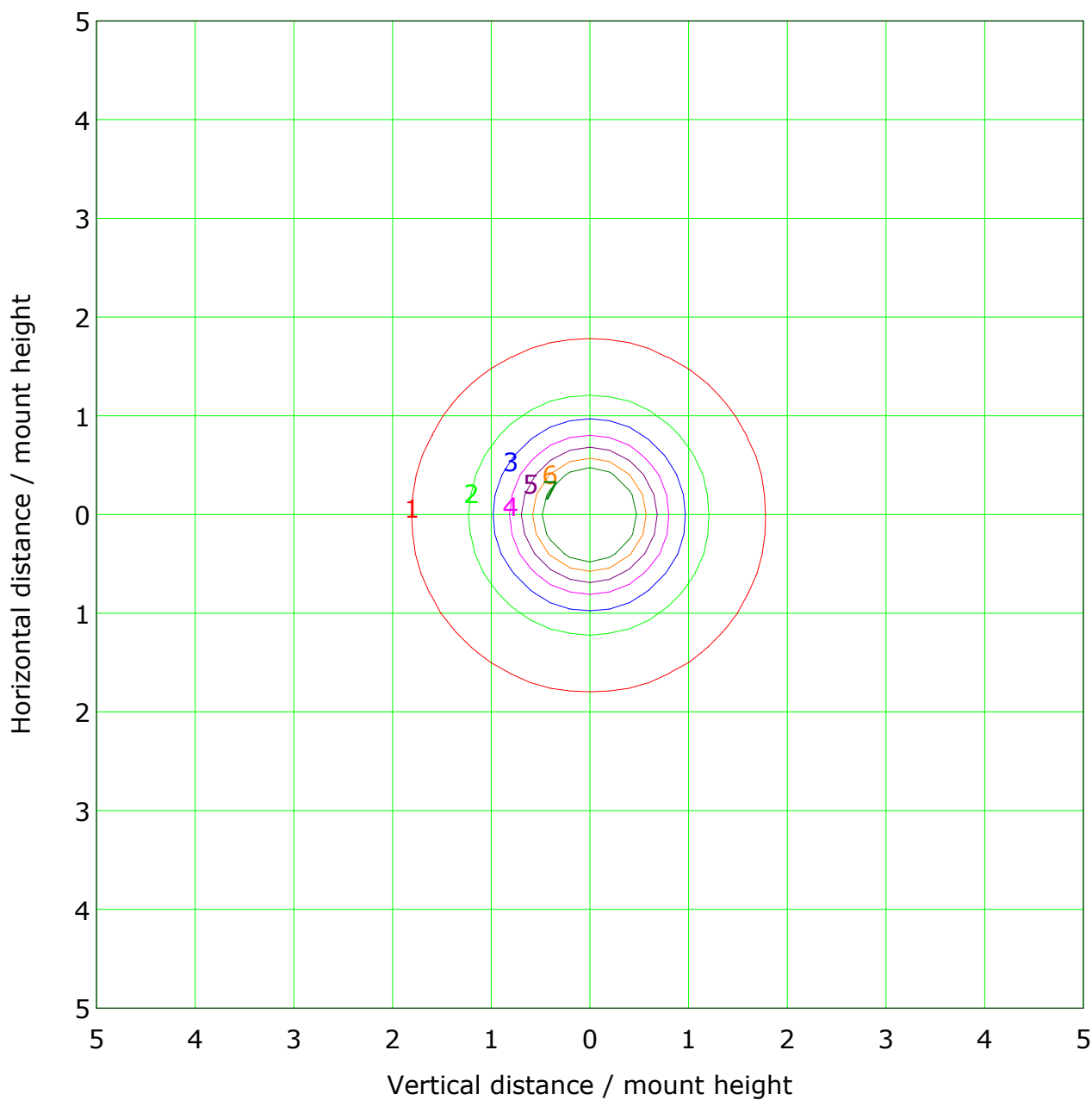
Test Device: LSG-1800B

Distance: 12.735 m

Humidity:

Inspector:

IsoLux Plot



Mounting Height: 10.0m		Max Lux(100%): 11.5 lx	
— (5%):	0.6 lx	— (15%):	1.7 lx
— (25%):	2.9 lx	— (35%):	4.0 lx
— (45%):	5.2 lx	— (55%):	6.3 lx
— (65%):	7.5 lx		

C Plane (°):0.0-360.0: 22.5

Test Lab:

Test Type: TYPE C

Temperature:

Operator:

Gamma Plane (°):0.0-180.0:2.0

Test Device: LSG-1800B

Distance: 12.735 m

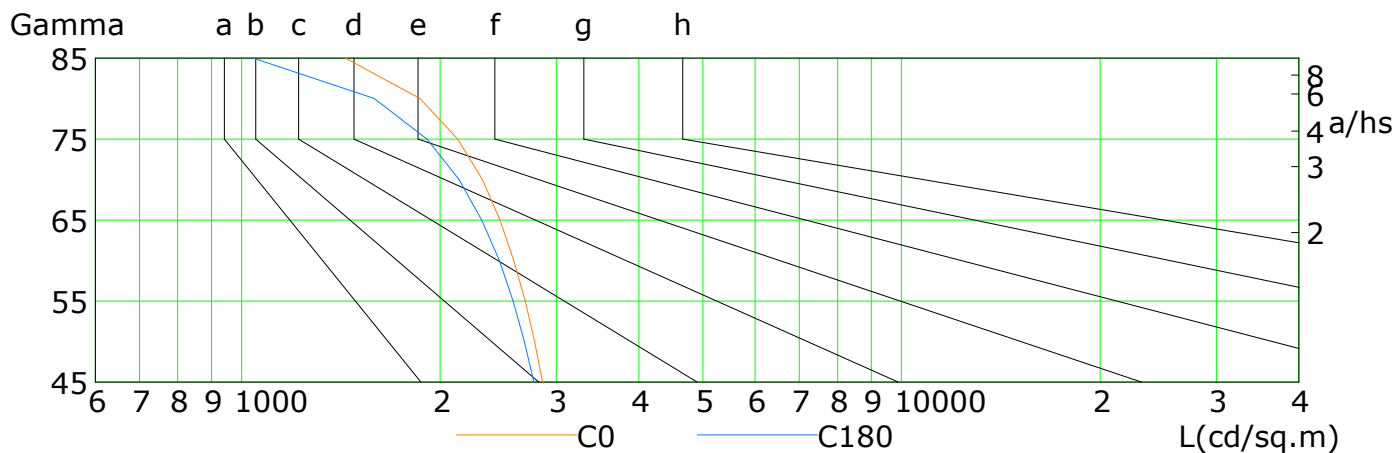
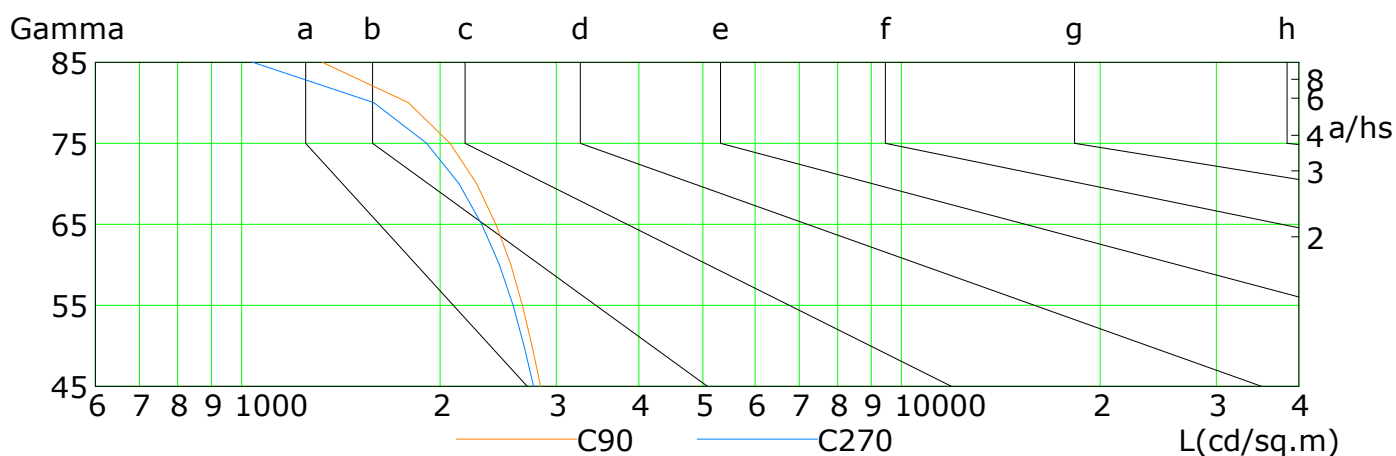
Humidity:

Inspector:

Lum Limit Curve

Dazzle	Quality	Illuminance (lx)							
1.15	A	2000	1000	500	<=300				
1.50	B		2000	1000	500	<=300			
1.85	C			2000	1000	500	<=300		
2.20	D				2000	1000	500	<=300	
2.55	E					2000	1000	500	<=300

a b c d e f g h

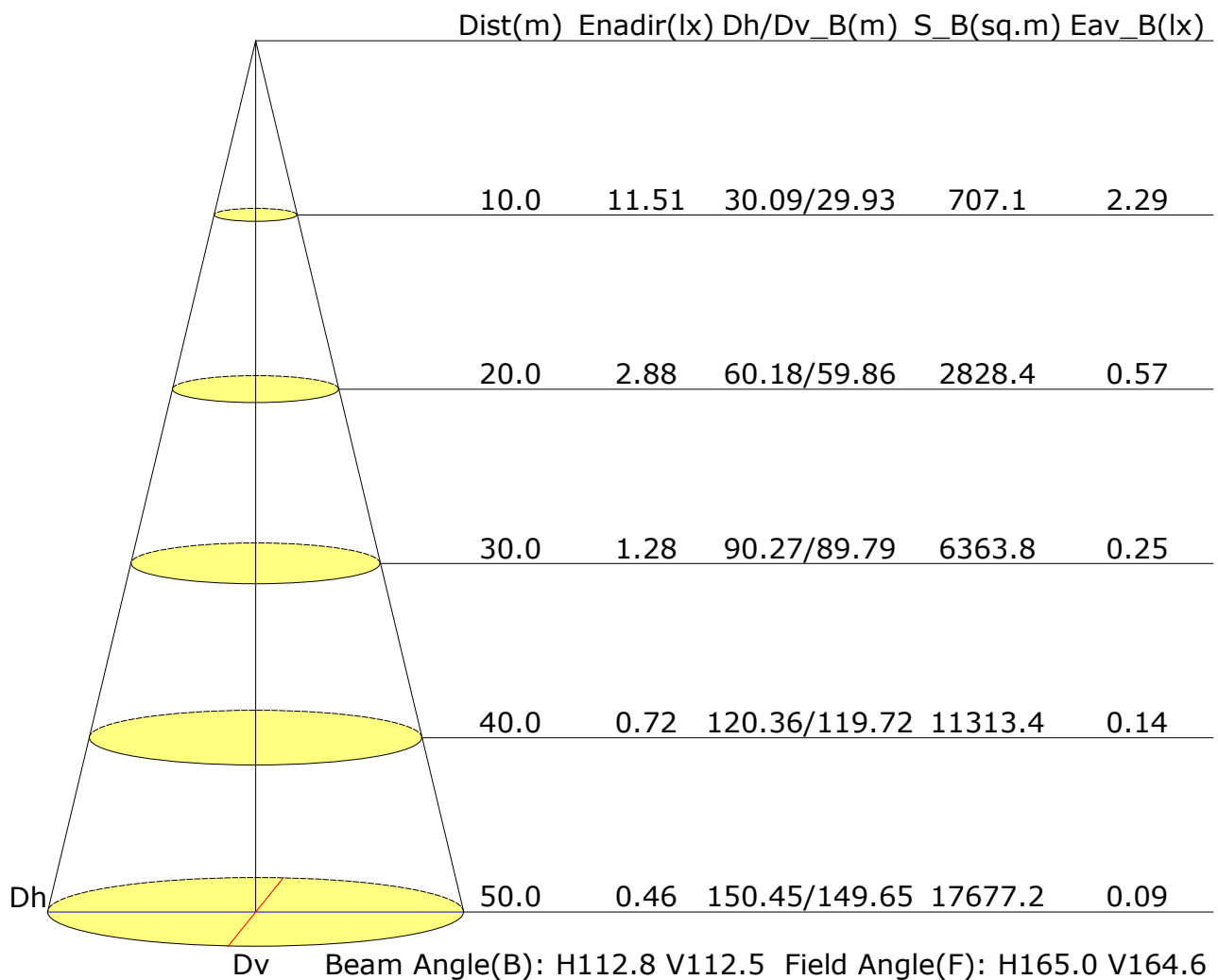


L(cd/sq.m)	G45	G50	G55	G60	G65	G70	G75	G80	G85
C0	2858	2781	2692	2586	2464	2316	2126	1863	1436
C90	2837	2755	2663	2558	2427	2272	2070	1791	1325
C180	2773	2683	2580	2457	2313	2136	1909	1589	1041
C270	2770	2680	2578	2458	2311	2135	1907	1587	1040

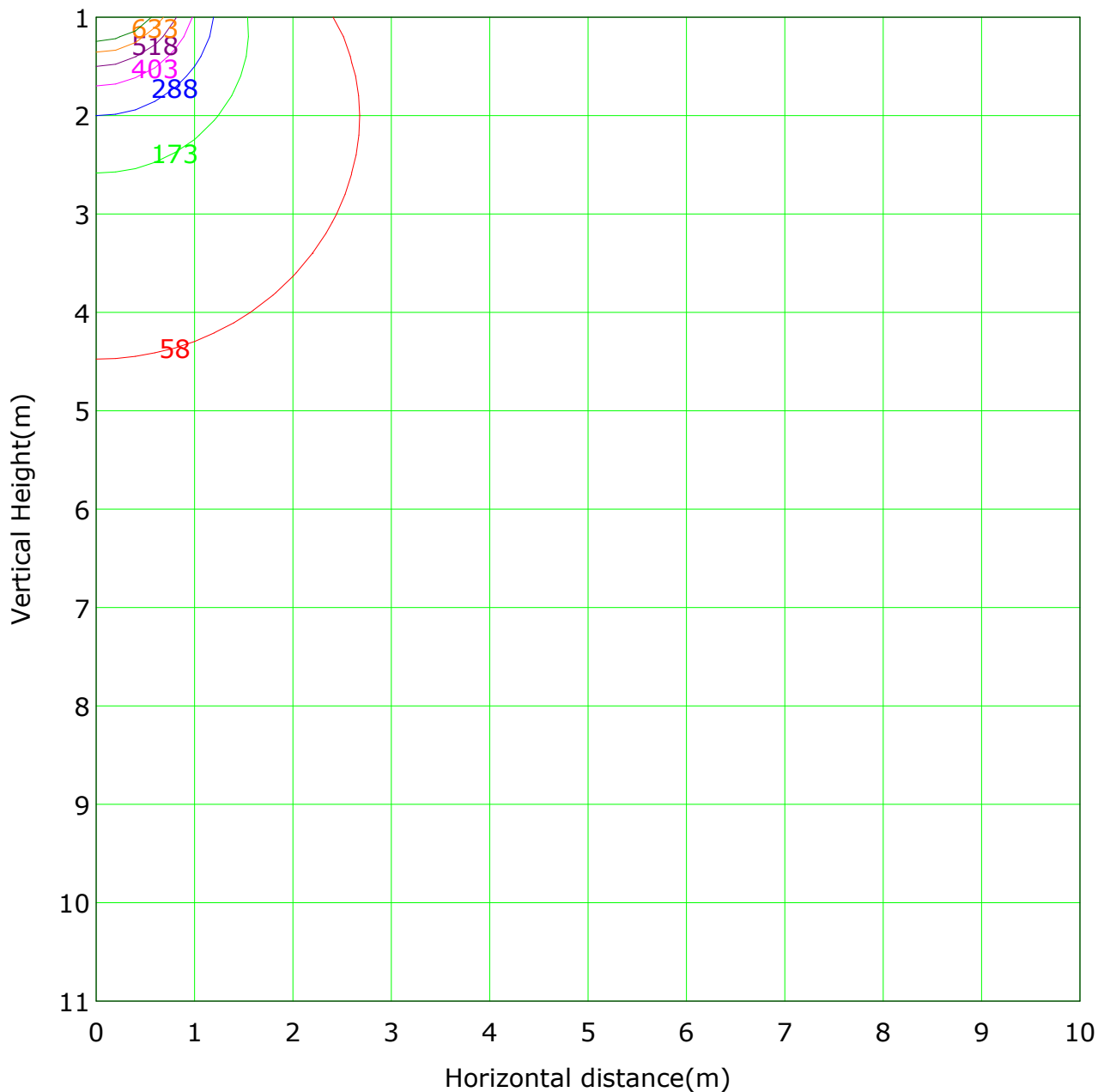
C Plane (°):0.0-360.0: 22.5
Test Lab:
Test Type: TYPE C
Temperature:
Operator:

Gamma Plane (°):0.0-180.0:2.0
Test Device: LSG-1800B
Distance: 12.735 m
Humidity:
Inspector:

Illuminance at a Distance



Vertical IsoLux Plot



Lowest(m): 1.0m Highest(m): 11.0m Max Lux: 1150.6 lx

(5%): 57.5 lx

(15%): 172.6 lx

(25%): 287.7 lx

(35%): 402.7 lx

(45%): 517.8 lx

(55%): 632.8 lx

(65%): 747.9 lx

C Plane (°):0.0-360.0: 22.5

Test Lab:

Test Type: TYPE C

Temperature:

Operator:

Gamma Plane (°):0.0-180.0:2.0

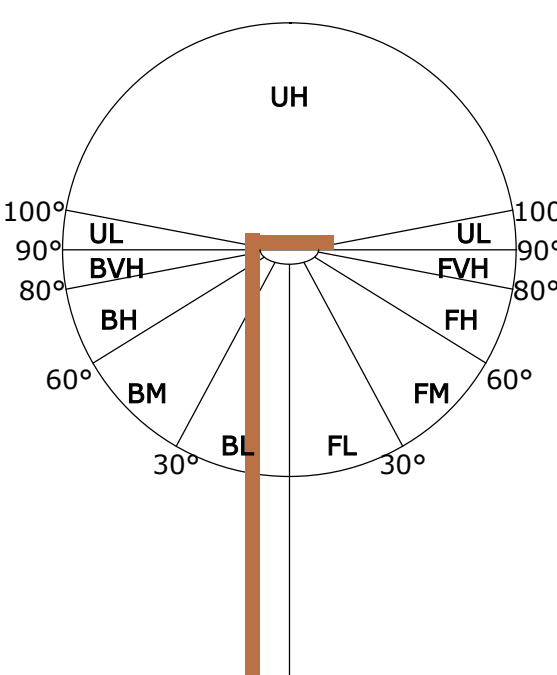
Test Device: LSG-1800B

Distance: 12.735 m

Humidity:

Inspector:

FLUX DISTRIBUTION TABLE BASED ON THE IESNA LUMINAIRE CLASSIFICATION SYSTEM

	ZONE	LUMENS	% LAMP LUMENS
	FORWARD LIGHT	1688	50.3
	FL (0°-30°)	447	13.3
	FM (30°-60°)	853	25.4
	FH (60°-80°)	344	10.2
	FVH (80°-90°)	44	1.3
	BACK LIGHT	1646	49.1
	BL (0°-30°)	444	13.3
	BM (30°-60°)	837	25.0
	BH (60°-80°)	328	9.8
	BVH (80°-90°)	37	1.1
	UP LIGHT	18	0.5
	UL (90°-100°)	2	0.1
	UH (100°-180°)	16	0.5
	TRAPPED LIGHT	NA	NA

BUG(Backlight,Uplight,Glare) Rating Base On TM-15-07	
Asymmetrical Luminaire Types (Type I,II,III,IV)	B1 U2 G1
Quadrilateral Symmetrical Luminaire Types (Type V,Area Light)	B1 U2 G1

C Plane (°):0.0-360.0: 22.5
Test Lab:
Test Type: TYPE C
Temperature:
Operator:

Gamma Plane (°):0.0-180.0:2.0
Test Device: LSG-1800B
Distance: 12.735 m
Humidity:
Inspector: