

Report No.:

Test Time: 09.04.2021 13:53

## Luminaire Property

Luminaire Manufacturer:

Lamp Catalog: FS 595 36W 4000K PRISM

Luminous Length (mm): 595

Luminous Height (mm): 50

Current: 0.167 A

Power Factor: 0.970

Luminous Width (mm): 595

Voltage: 221.5 V

Power: 35.96 W

## Photometric Results

CIE Class: Direct

Measurement Flux: 3981 lm

Downward Ratio: 100%

Field Angle(C0/C180,C90/C270,C45/C225,C135/315): 162.3, 156.3, 151.5, 151.4

Beam Angle(C0/C180,C90/C270,C45/C225,C135/315): 82.9, 79.3, 77.8, 77.2

Luminaire Efficacy Rating (LER): 110.76

Max. Intensity: 1982.22 cd

S/MH(C0/C180): 1.13

Total Rated Lamp Lumens: 3981.0 lm

Efficiency: 100%

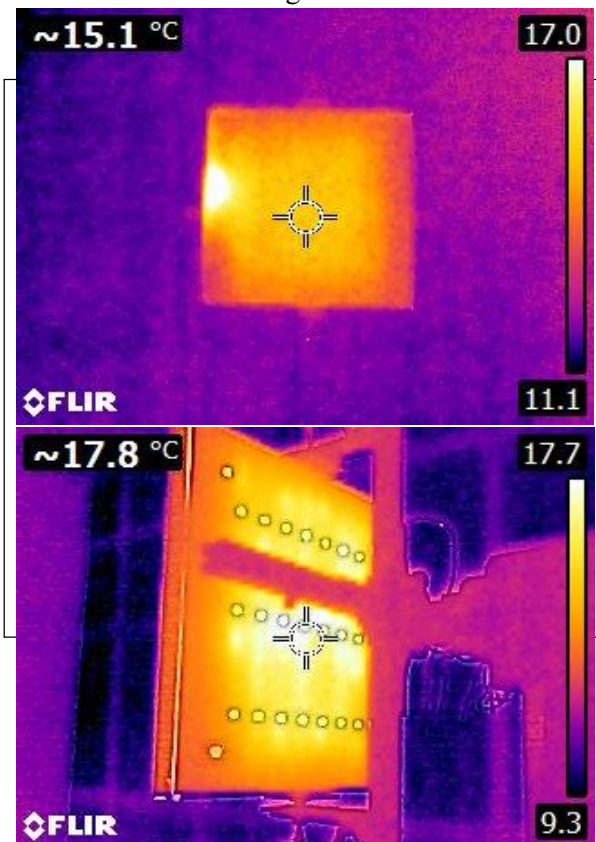
Upward Ratio: 0%

Central Intensity: 1981.39 cd

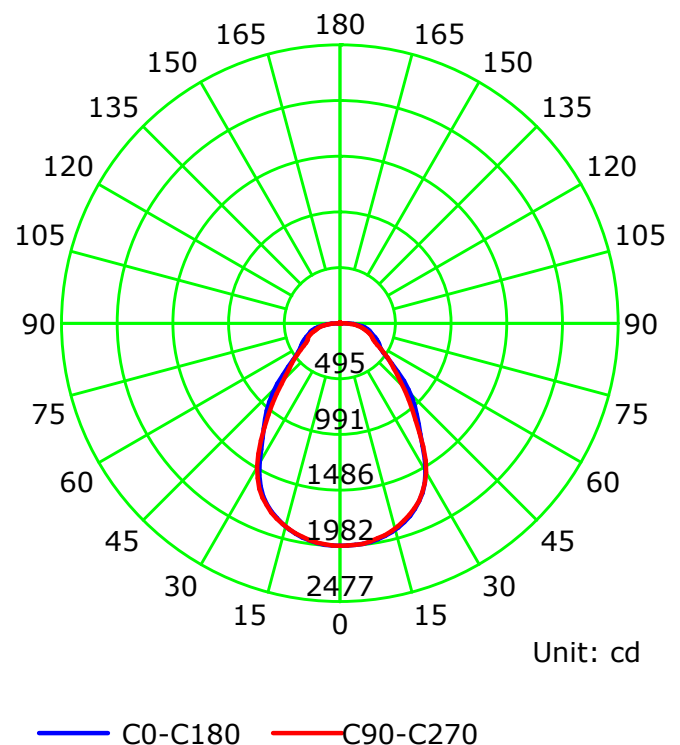
Pos of Max. Intensity: H22.5 V0

S/MH(C90/C270): 1.14

Termogramma



Luminous Intensity Distribution Curve



C Plane (°):0.0-360.0: 22.5

Test Lab:

Test Type: TYPE C

Temperature:

Operator:

Gamma Plane (°):0.0-180.0:2.0

Test Device: LSG-1800B

Distance: 12.735 m

Humidity:

Inspector:

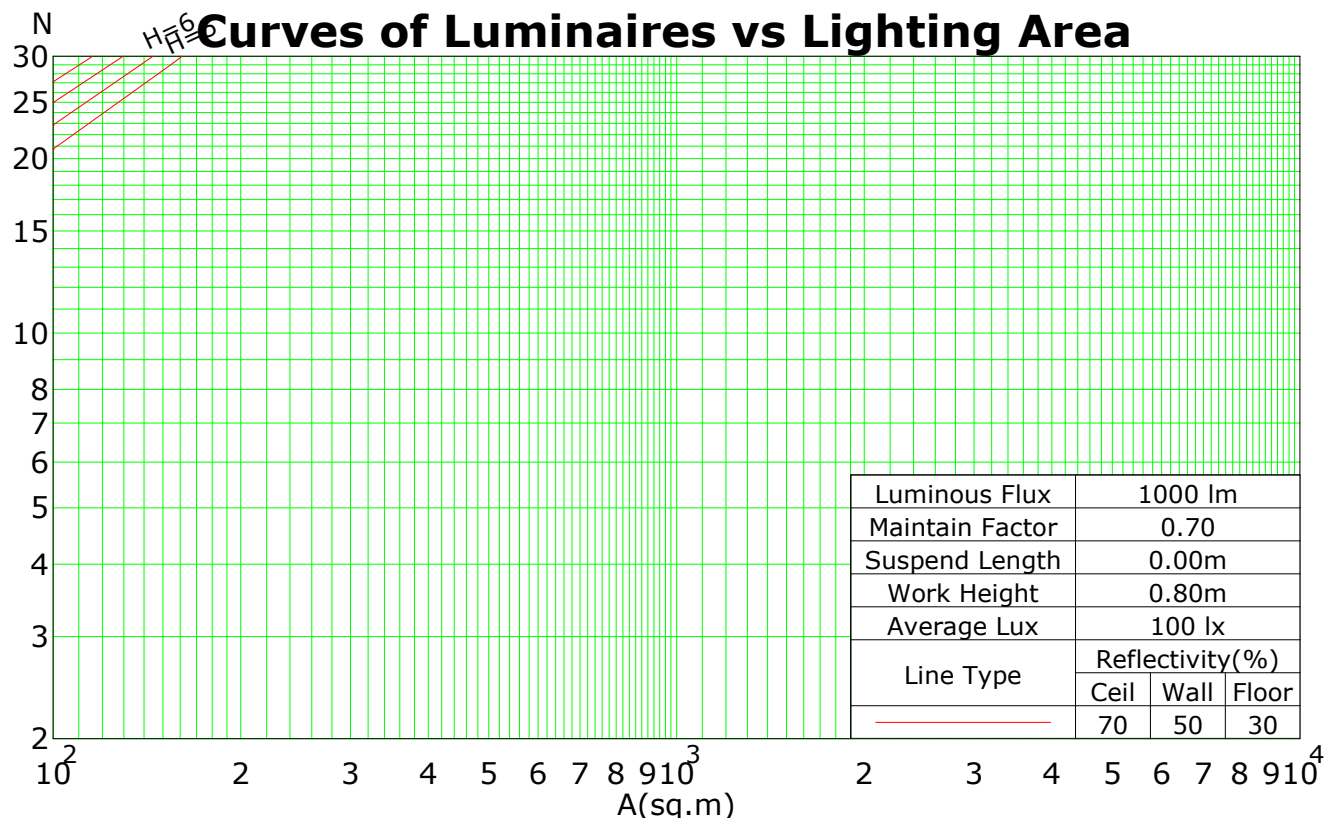
## Coefficients Of Utilization - Zonal Cavity Method

RC	0.8	0.8	0.8	0.8	0.7	0.7	0.7	0.7	0.5	0.5	0.5	0.3	0.3	0.3	0.1	0.1	0.1	0
RW	0.7	0.5	0.3	0.1	0.7	0.5	0.3	0.1	0.5	0.3	0.1	0.5	0.3	0.1	0.5	0.3	0.1	0
RCR	RF = 0.2																	
0	119	119	119	119	116	116	116	116	111	111	111	106	106	106	102	102	102	100
1	109	105	101	97	107	103	99	96	98	95	92	94	92	90	91	89	87	85
2	100	93	87	81	98	91	85	80	87	83	78	84	80	76	81	78	75	73
3	93	83	75	69	90	81	74	69	78	72	68	76	71	66	73	69	65	63
4	86	75	67	60	83	73	66	60	71	64	59	68	63	58	66	61	57	55
5	79	68	59	53	77	67	59	53	64	58	52	62	56	52	61	55	51	49
6	74	62	53	47	72	61	53	47	59	52	47	57	51	46	56	50	46	44
7	69	57	48	43	67	56	48	43	54	47	42	53	47	42	51	46	42	40
8	65	52	44	39	63	51	44	39	50	43	38	49	43	38	48	42	38	36
9	61	48	41	35	59	48	40	35	46	40	35	45	39	35	44	39	35	33
10	57	45	37	32	56	44	37	32	43	37	32	42	36	32	42	36	32	30

Spacing Criteria (0-180): 1.13

Spacing Criteria (90-270): 1.14

Spacing Criteria (Diagonal): 1.11



C Plane (°):0.0-360.0: 22.5

Test Lab:

Test Type: TYPE C

Temperature:

Operator:

Gamma Plane (°):0.0-180.0:2.0

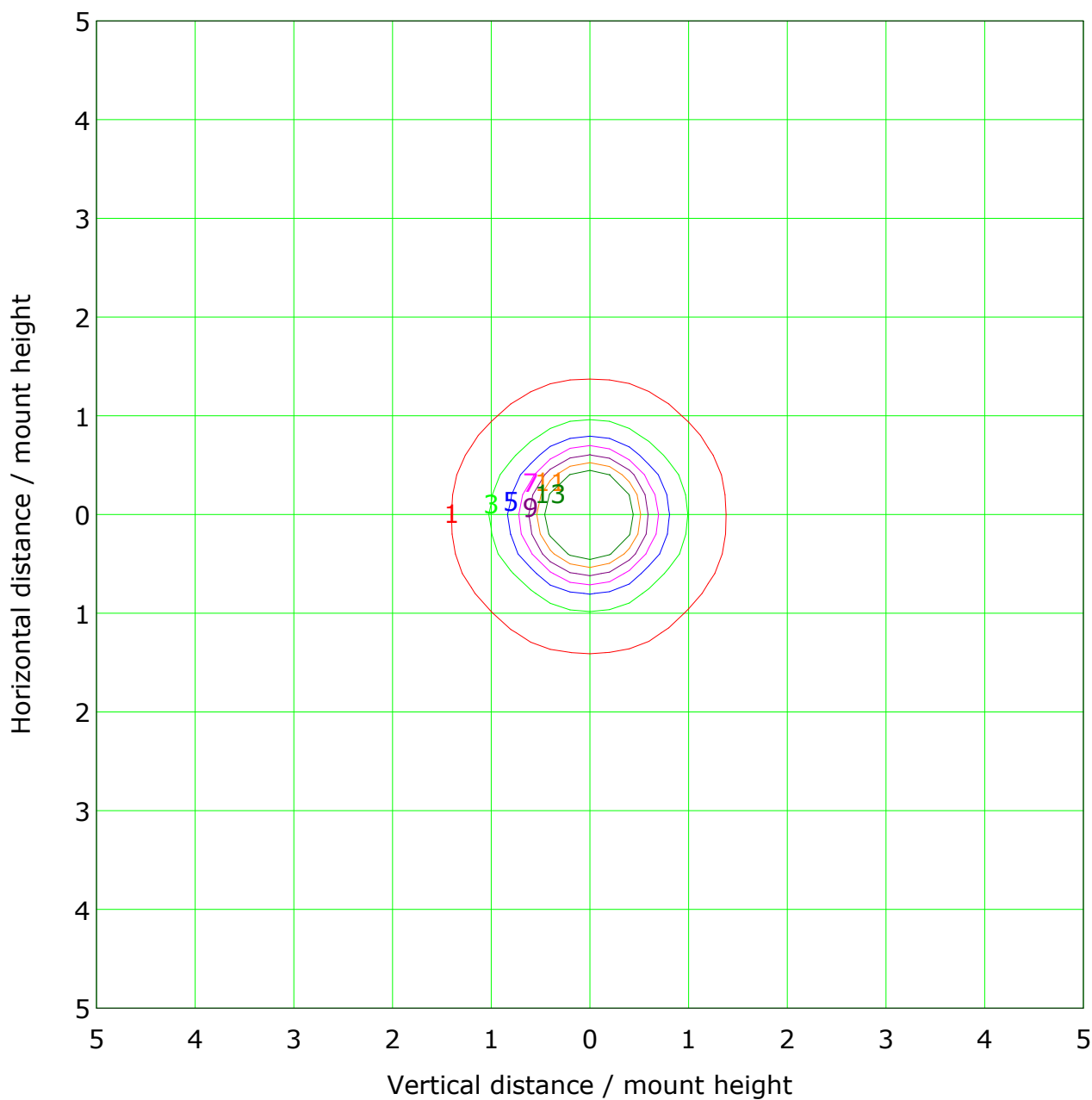
Test Device: LSG-1800B

Distance: 12.735 m

Humidity:

Inspector:

## IsoLux Plot



Mounting Height: 10.0m		Max Lux(100%): 19.8 lx	
— ( 5%):	1.0 lx	— ( 15%):	3.0 lx
— ( 25%):	5.0 lx	— ( 35%):	6.9 lx
— ( 45%):	8.9 lx	— ( 55%):	10.9 lx
— ( 65%):	12.9 lx		

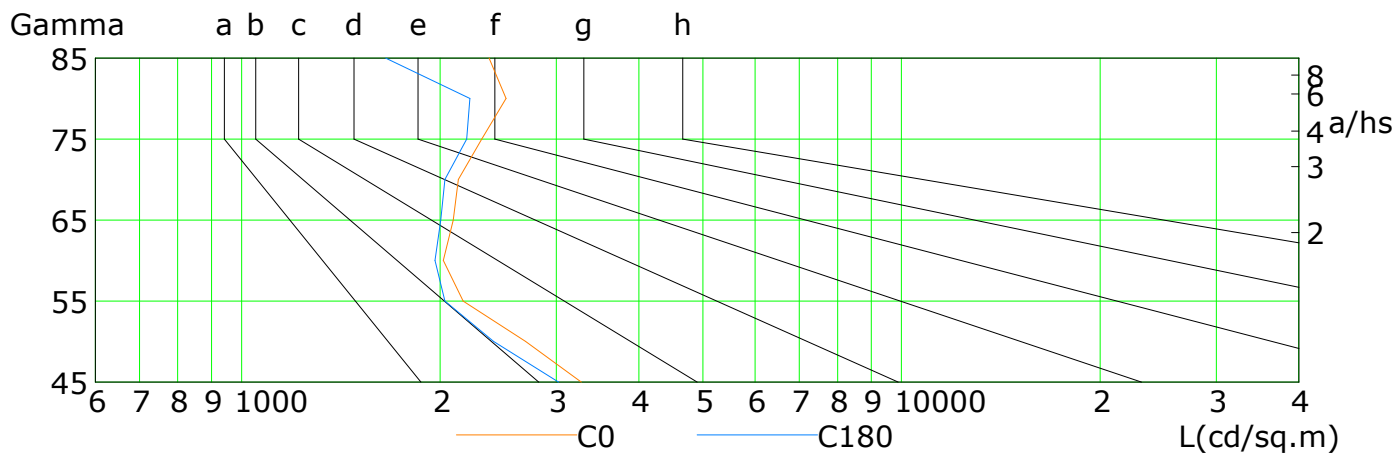
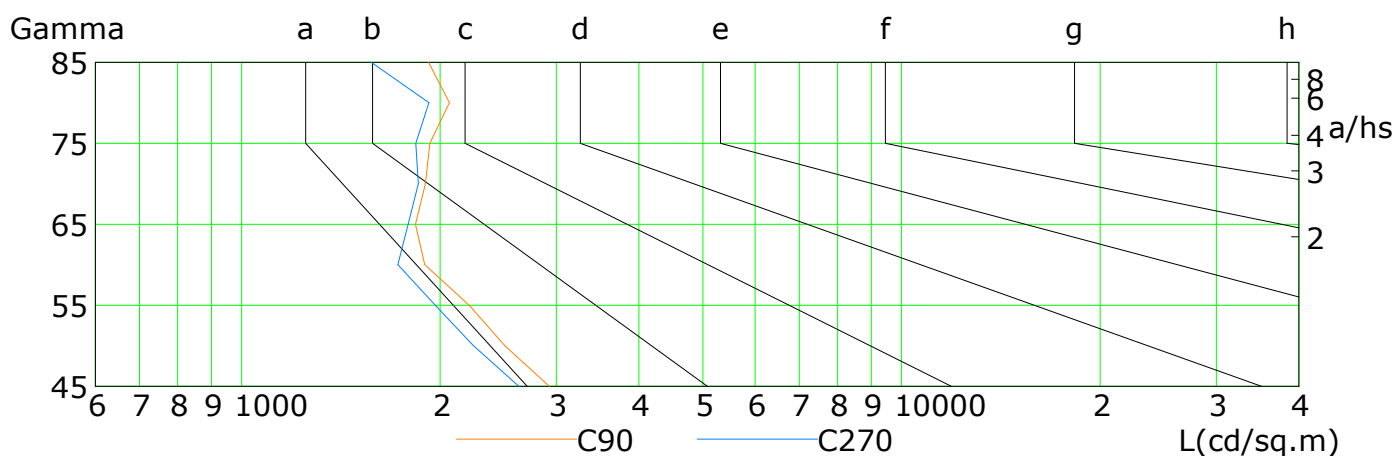
C Plane (°):0.0-360.0: 22.5  
Test Lab:  
Test Type: TYPE C  
Temperature:  
Operator:

Gamma Plane (°):0.0-180.0:2.0  
Test Device: LSG-1800B  
Distance: 12.735 m  
Humidity:  
Inspector:

## Lum Limit Curve

Dazzle	Quality	Illuminance (lx)							
1.15	A	2000	1000	500	<=300				
1.50	B		2000	1000	500	<=300			
1.85	C			2000	1000	500	<=300		
2.20	D				2000	1000	500	<=300	
2.55	E					2000	1000	500	<=300

a b c d e f g h



L(cd/sq.m)	G45	G50	G55	G60	G65	G70	G75	G80	G85
C0	3272	2695	2166	2021	2093	2130	2312	2516	2372
C90	2927	2505	2212	1894	1835	1899	1930	2066	1921
C180	3024	2409	2032	1965	2004	2033	2194	2217	1653
C270	2631	2245	1967	1724	1789	1852	1836	1922	1573

C Plane (°):0.0-360.0: 22.5

Test Lab:

Test Type: TYPE C

Temperature:

Operator:

Gamma Plane (°):0.0-180.0:2.0

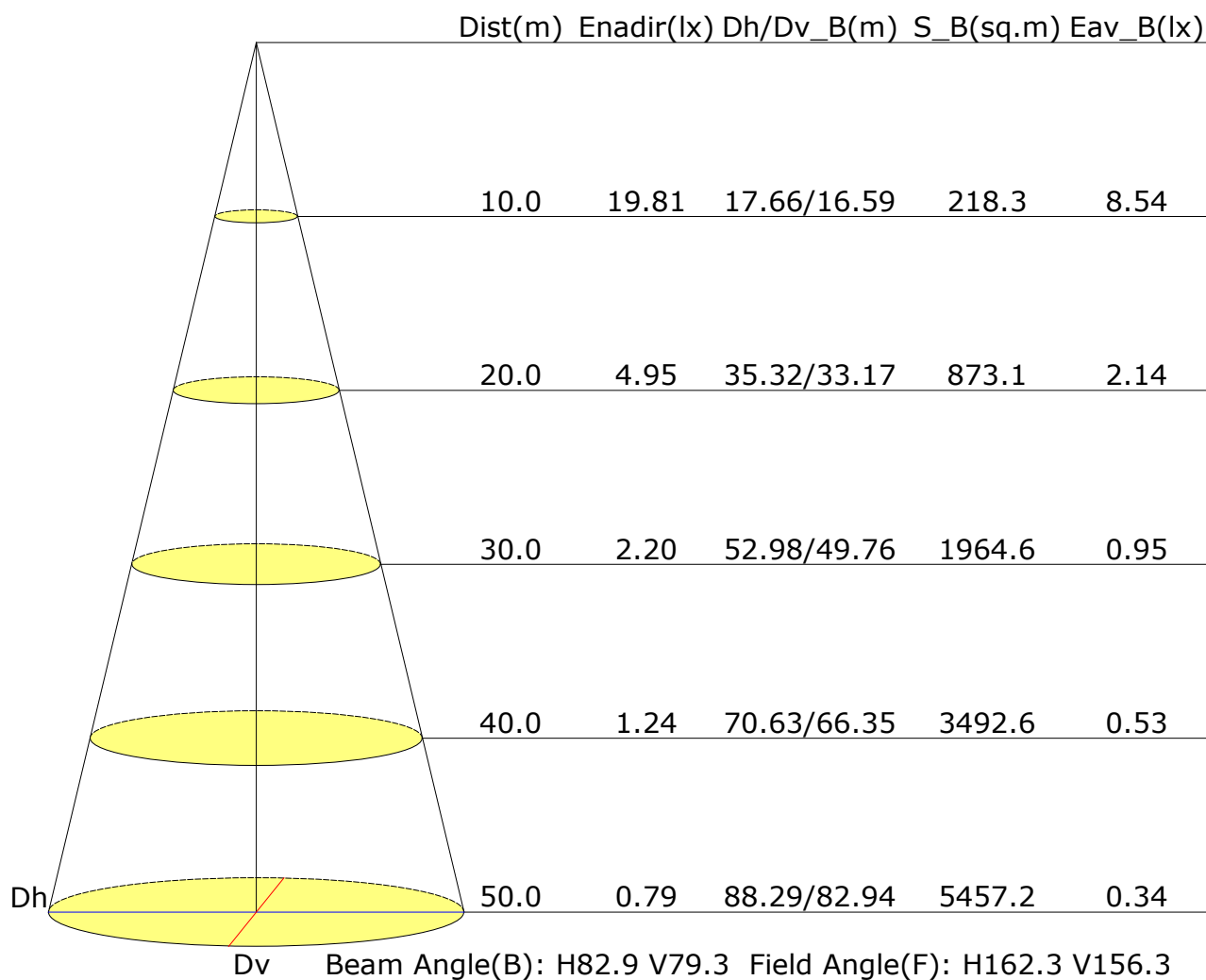
Test Device: LSG-1800B

Distance: 12.735 m

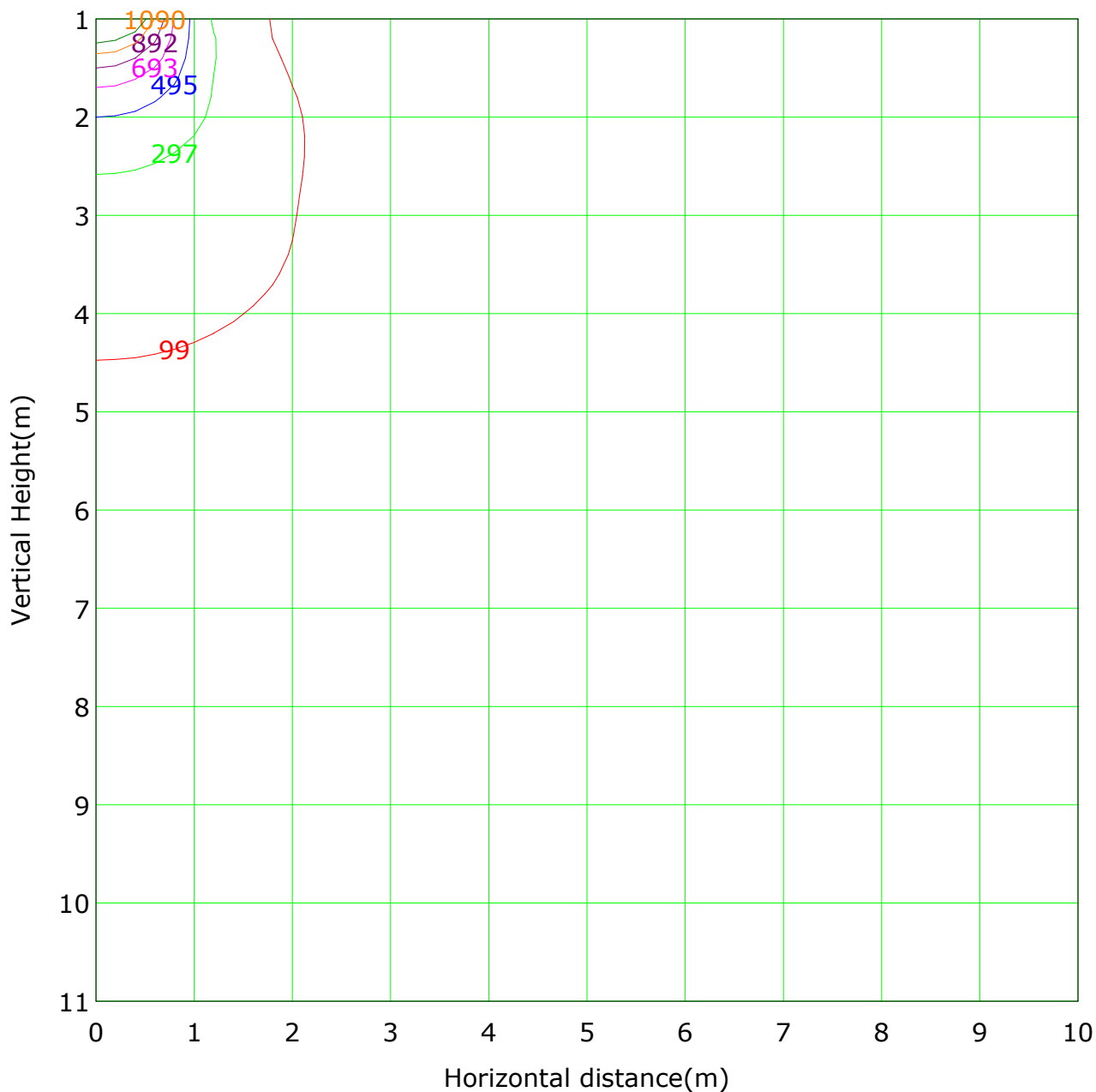
Humidity:

Inspector:

## Illuminance at a Distance



## Vertical IsoLux Plot



Lowest(m): 1.0m Highest(m): 11.0m Max Lux: 1981.4 lx

( 5%): 99.1 lx

( 15%): 297.2 lx

( 25%): 495.3 lx

( 35%): 693.5 lx

( 45%): 891.6 lx

( 55%): 1089.8 lx

( 65%): 1287.9 lx

C Plane (°): 0.0-360.0: 22.5

Test Lab:

Test Type: TYPE C

Temperature:

Operator:

Gamma Plane (°): 0.0-180.0: 2.0

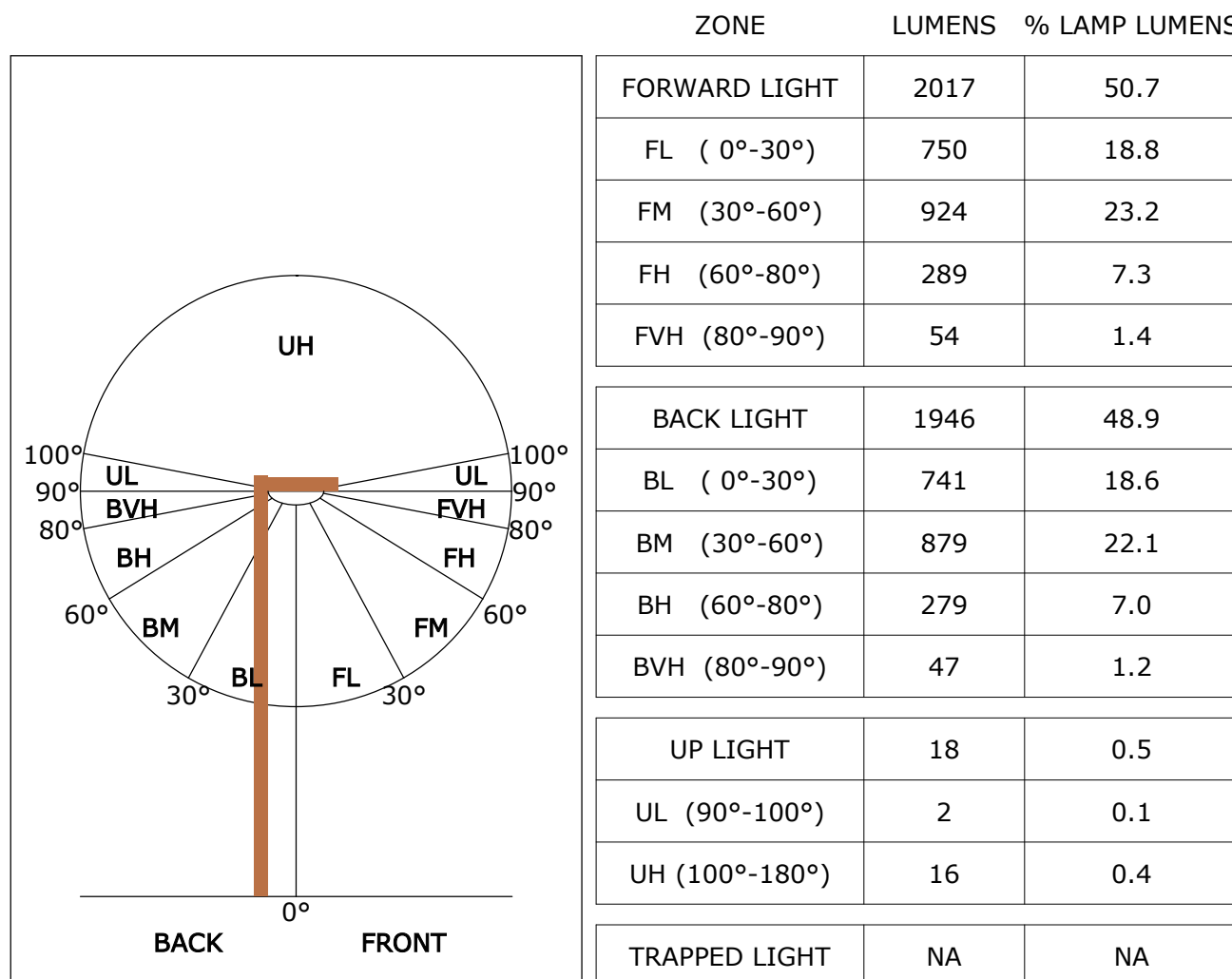
Test Device: LSG-1800B

Distance: 12.735 m

Humidity:

Inspector:

**FLUX DISTRIBUTION TABLE BASED ON THE IESNA LUMINAIRE CLASSIFICATION SYSTEM**



BUG(Backlight,Uplight,Glare) Rating Base On TM-15-07	
Asymmetrical Luminaire Types (Type I,II,III,IV)	B2 U2 G1
Quadrilateral Symmetrical Luminaire Types (Type V,Area Light)	B2 U2 G1

C Plane (°):0.0-360.0: 22.5  
Test Lab:  
Test Type: TYPE C  
Temperature:  
Operator:

Gamma Plane (°):0.0-180.0:2.0  
Test Device: LSG-1800B  
Distance: 12.735 m  
Humidity:  
Inspector: