

Report No.:

Test Time: 19.06.2020 22:00

## Luminaire Property

Luminaire Manufacturer:

Luminaire Description: FL 60/1000 52W 4000K прозрачный

Number of Lamps: 1

Luminous Length (mm): 950

Luminous Width (mm): 60

Luminous Height (mm): 70

Voltage: 221.9 V

Current: 0.246 A

Power: 52.50 W

Power Factor: 0.960

## Photometric Results

CIE Class: Direct

Total Rated Lamp Lumens: 6755.3 lm

Measurement Flux: 6755.3 lm

Efficiency: 100%

Downward Ratio: 100%

Upward Ratio: 0%

Field Angle(C0/C180,C90/C270,C45/C225,C135/315): 156.4, 117.0, 133.4, 133.9

Beam Angle(C0/C180,C90/C270,C45/C225,C135/315): 114.3, 107.4, 111.8, 111.8

Luminaire Efficacy Rating (LER): 128.72

Central Intensity: 2629.85 cd

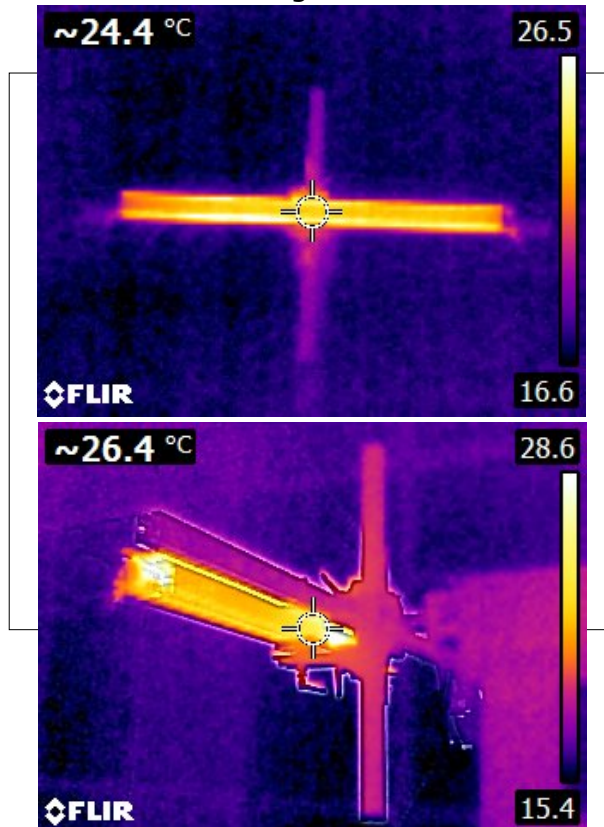
Max. Intensity: 2633.96 cd

Pos of Max. Intensity: H112.5 V0

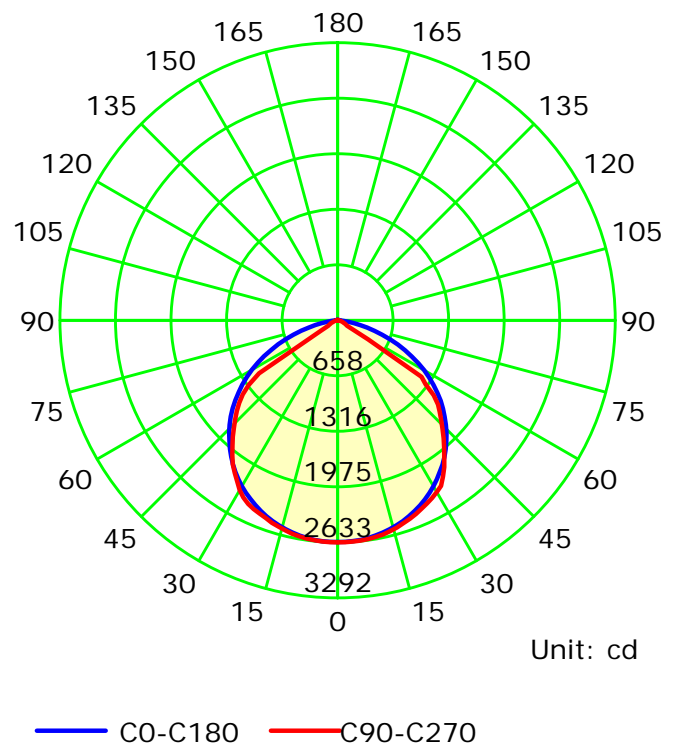
S/MH(C0/C180): 1.28

S/MH(C90/C270): 1.30

Termogramma



Luminous Intensity Distribution Curve



C Plane (°):0.0-360.0: 22.5

Gamma Plane (°):0.0-180.0:2.0

Test Lab:

Test Device: LSG-1800B

Test Type: TYPE C

Distance: 12.677 m

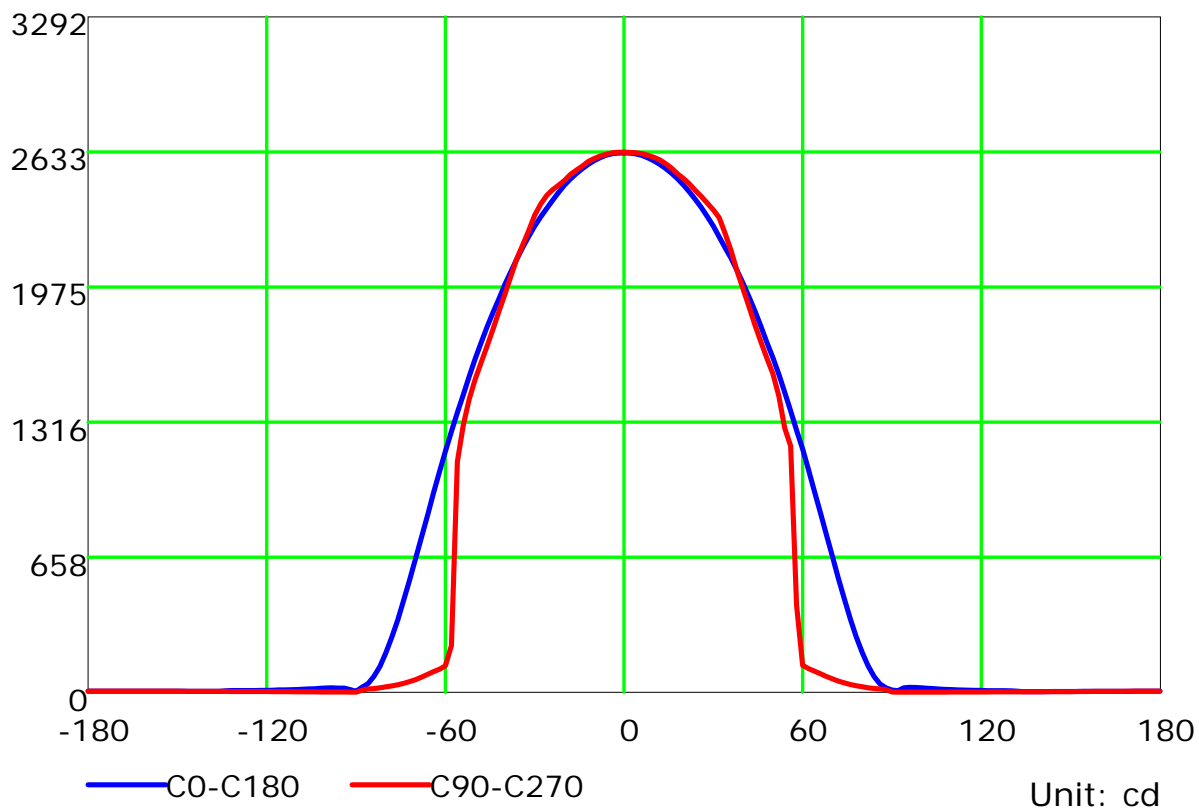
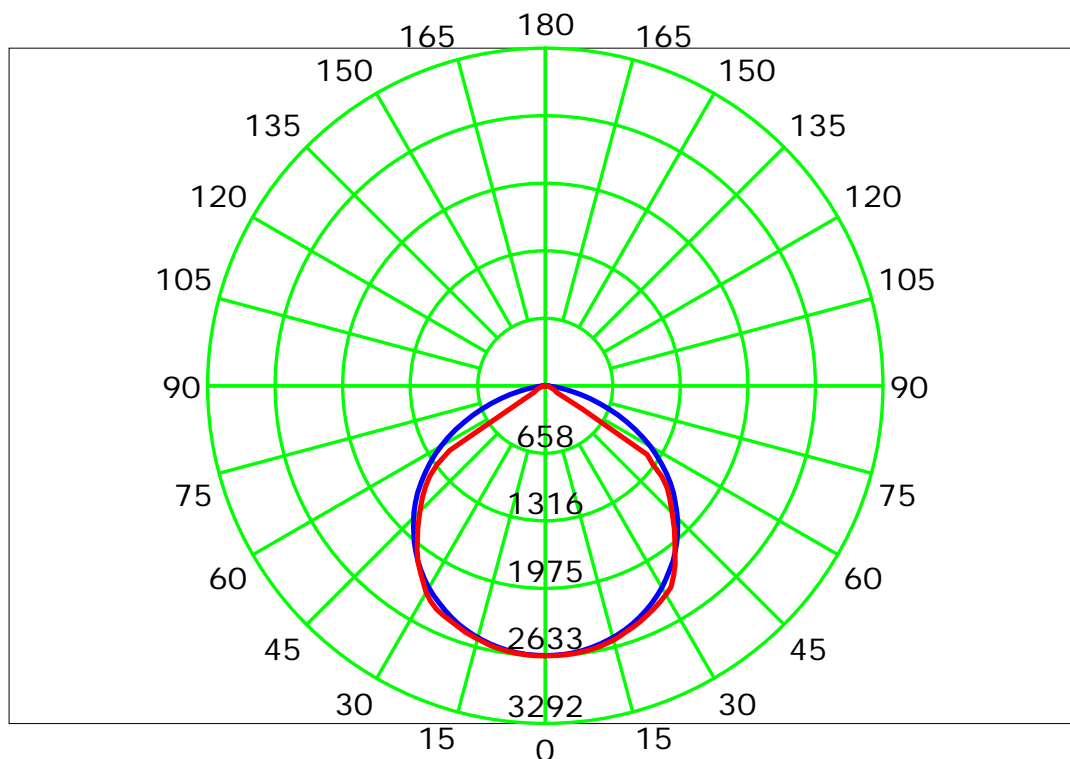
Temperature:

Humidity:

Operator:

Inspector:

## Luminous Intensity Distribution Curve



C Plane (°): 0.0-360.0: 22.5

Test Lab:

Test Type: TYPE C

Temperature:

Operator:

Gamma Plane (°): 0.0-180.0: 2.0

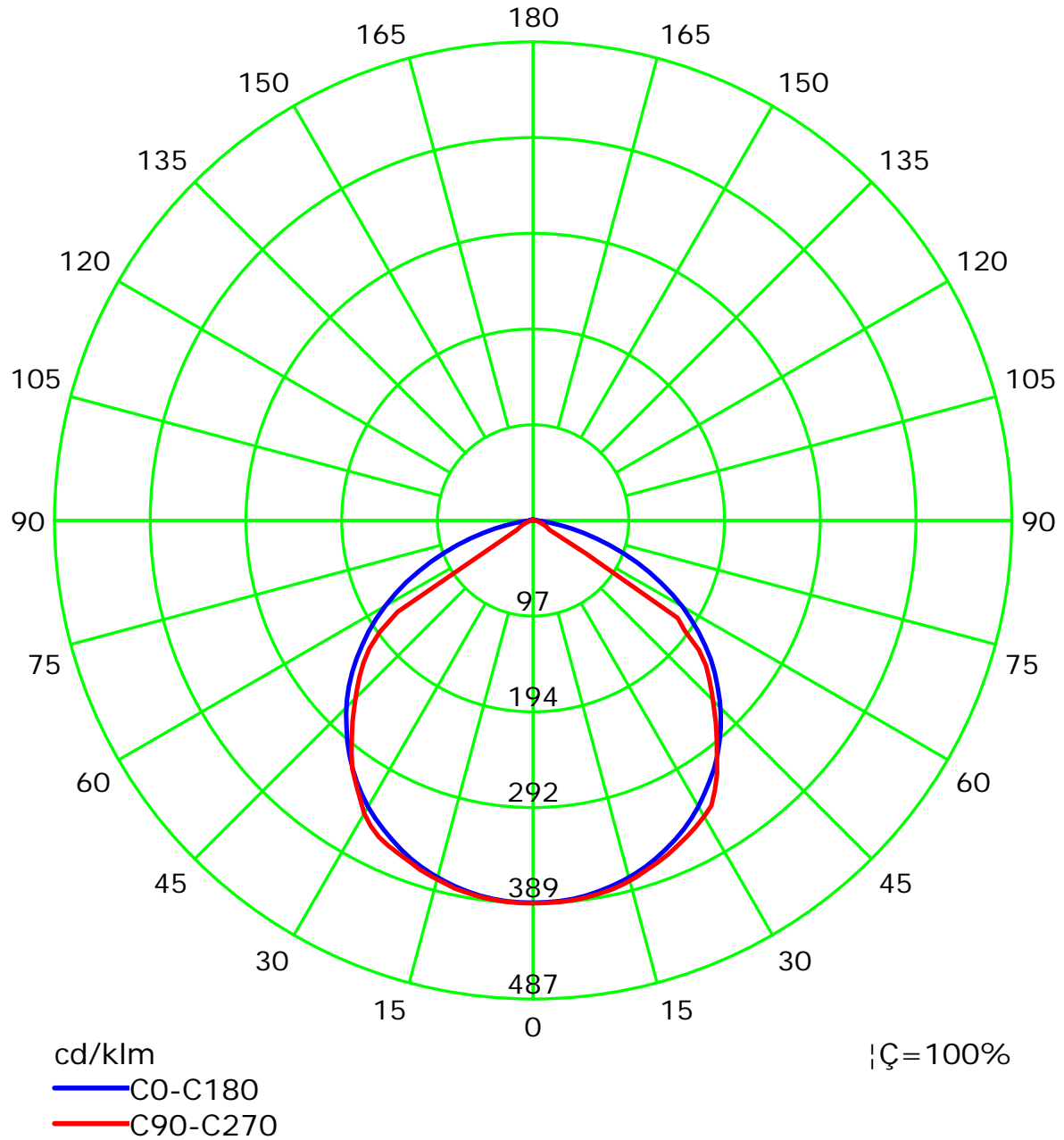
Test Device: LSG-1800B

Distance: 12.677 m

Humidity:

Inspector:

## Luminous Intensity Distribution Curve(cd/klm)



C Plane (°):0.0-360.0: 22.5

Test Lab:

Test Type: TYPE C

Temperature:

Operator:

Gamma Plane (°):0.0-180.0:2.0

Test Device: LSG-1800B

Distance: 12.677 m

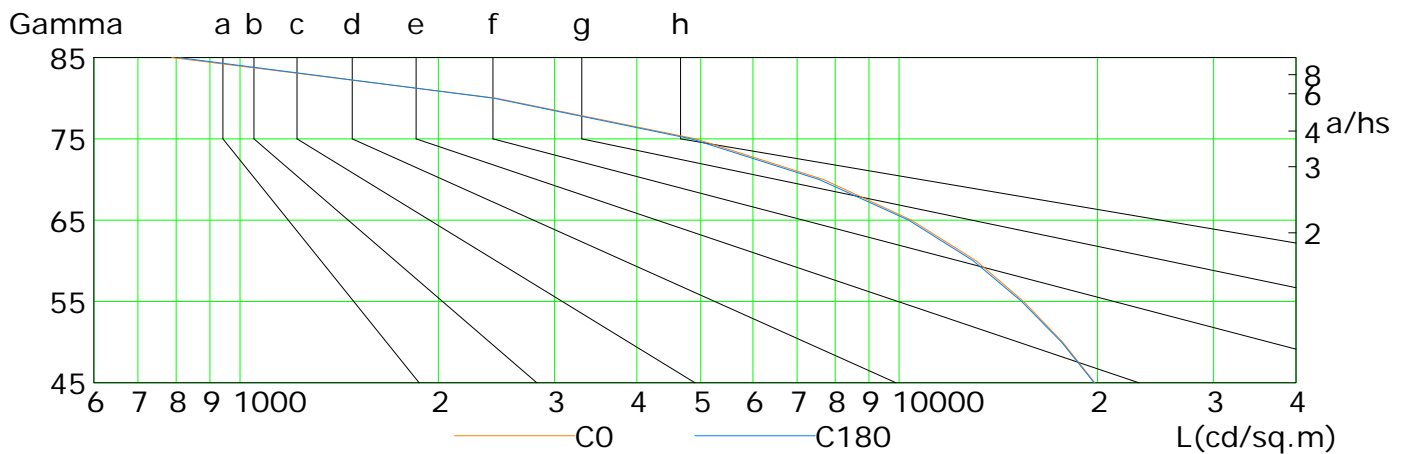
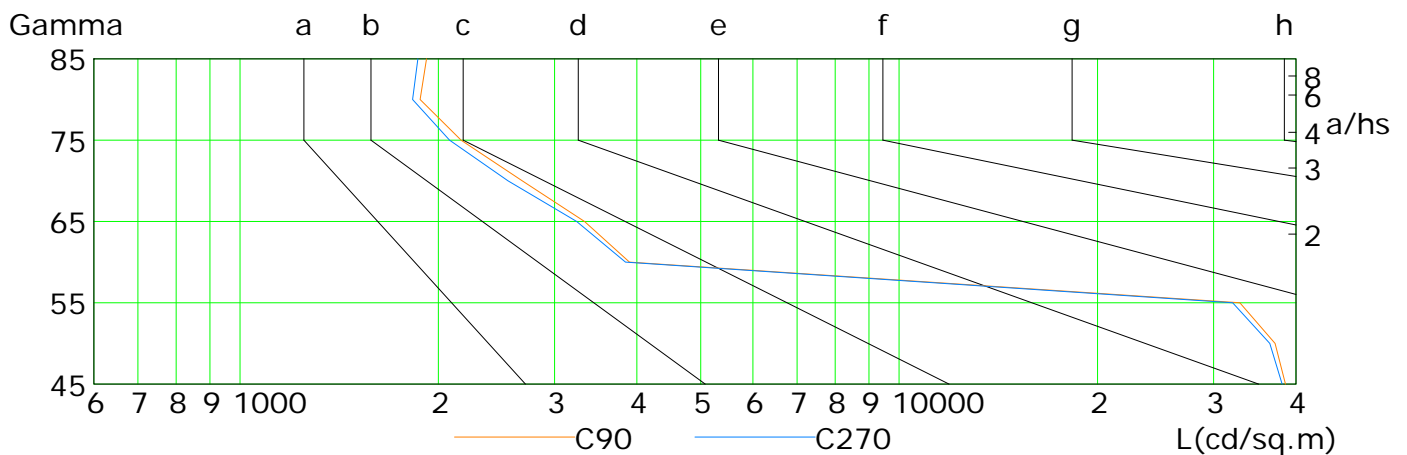
Humidity:

Inspector:

## Lum Limit Curve

Dazzle	Quality	Illuminance (lx)							
1.15	A	2000	1000	500	<=300				
1.50	B		2000	1000	500	<=300			
1.85	C			2000	1000	500	<=300		
2.20	D				2000	1000	500	<=300	
2.55	E					2000	1000	500	<=300

a b c d e f g h



L(cd/sq.m)	G45	G50	G55	G60	G65	G70	G75	G80	G85
C0	19816	17700	15447	13090	10439	7677	4912	2449	788
C90	38551	37182	32878	3898	3331	2680	2165	1876	1918
C180	19771	17633	15341	12961	10338	7565	4838	2426	807
C270	38107	36508	32061	3845	3242	2550	2080	1827	1862

C Plane (°):0.0-360.0: 22.5

Test Lab:

Test Type: TYPE C

Temperature:

Operator:

Gamma Plane (°):0.0-180.0:2.0

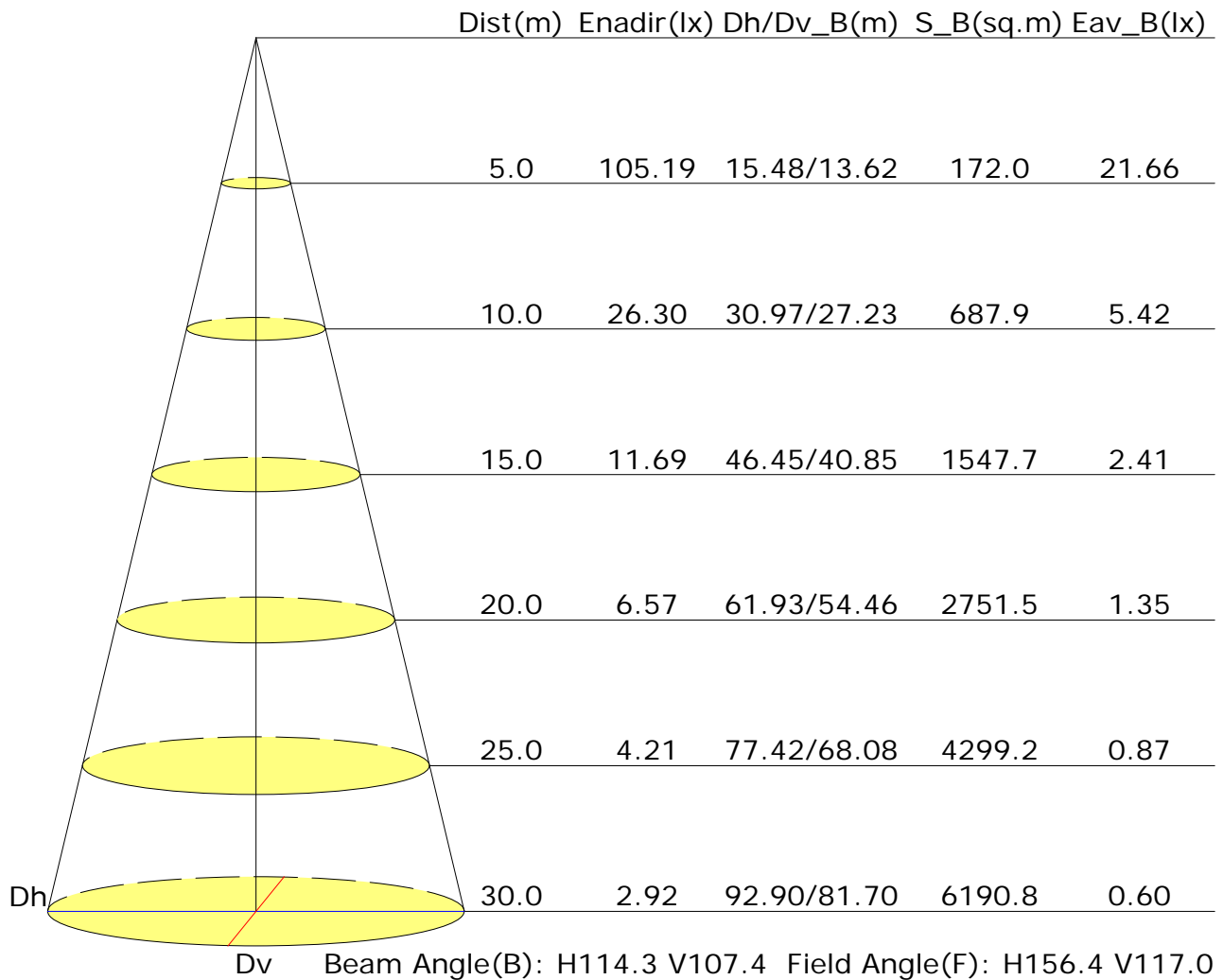
Test Device: LSG-1800B

Distance: 12.677 m

Humidity:

Inspector:

## Illuminance at a Distance



## UGR Table

Reflectance:										
Ceiling (cavity)	0.7	0.7	0.5	0.5	0.3	0.7	0.7	0.5	0.5	0.3
Wall	0.5	0.3	0.5	0.3	0.3	0.5	0.3	0.5	0.3	0.3
Reference plane	0.2	0.2	0.2	0.2	0.2	0.2	0.2	0.2	0.2	0.2
Room dimensions	Viewed crosswise					Viewed endwise				
X=2H Y=2H	22.7	24.0	23.0	24.3	24.5	22.4	23.7	22.7	23.9	24.2
3H	23.6	24.8	23.9	25.0	25.3	22.3	23.4	22.6	23.7	24.0
4H	23.8	24.9	24.2	25.2	25.5	22.2	23.3	22.5	23.6	23.9
6H	23.8	24.8	24.2	25.2	25.5	22.1	23.1	22.5	23.4	23.8
8H	23.8	24.8	24.2	25.1	25.4	22.1	23.1	22.5	23.4	23.7
12H	23.8	24.7	24.2	25.1	25.4	22.1	23.0	22.4	23.3	23.7
X=4H Y=2H	23.0	24.1	23.4	24.4	24.7	22.7	23.7	23.0	24.0	24.3
3H	23.9	24.9	24.3	25.2	25.6	22.5	23.5	22.9	23.8	24.1
4H	24.2	25.0	24.6	25.4	25.8	22.5	23.3	22.9	23.7	24.0
6H	24.2	25.0	24.7	25.4	25.8	22.4	23.1	22.8	23.5	23.9
8H	24.2	24.9	24.7	25.3	25.7	22.4	23.0	22.8	23.4	23.9
12H	24.2	24.8	24.7	25.2	25.7	22.4	22.9	22.8	23.4	23.8
X=8H Y=4H	24.1	24.8	24.6	25.2	25.6	22.4	23.1	22.9	23.5	23.9
6H	24.2	24.7	24.6	25.1	25.6	22.4	22.9	22.9	23.3	23.8
8H	24.2	24.6	24.6	25.1	25.6	22.4	22.8	22.8	23.3	23.8
12H	24.1	24.5	24.6	25.0	25.5	22.3	22.7	22.8	23.2	23.7
X=12H Y=4H	24.1	24.7	24.5	25.1	25.5	22.4	23.0	22.9	23.4	23.9
6H	24.1	24.6	24.6	25.0	25.5	22.4	22.8	22.8	23.3	23.8
8H	24.1	24.5	24.6	25.0	25.5	22.3	22.7	22.8	23.2	23.7
Variations with the observer position at spacings:										
S=1.0H	+0.2/-0.3					+0.7/-1.3				
S=1.5H	+0.6/-1.4					+2.4/-9.2				
S=2.0H	+1.1/-2.1					+3.9/-11.6				

Calculate in accordance with CIE Pub.117. The table is revised with 6755lm ( $8\log(F/F_0) = 6.6$ ).

C Plane (°):0.0-360.0: 22.5

Test Lab:

Test Type: TYPE C

Temperature:

Operator:

Gamma Plane (°):0.0-180.0:2.0

Test Device: LSG-1800B

Distance: 12.677 m

Humidity:

Inspector:

## Utilisation Factor Table(Floor cavity)

Utilisation Factors UF(F)			SHR NOM = 1.25									
Room Reflectance			Room Index(RI)									
Ceiling	Wall	Floor	0.75	1.00	1.25	1.50	2.00	2.50	3.00	4.00	5.00	
0.70	0.50	0.20	0.61	0.72	0.80	0.85	0.92	0.97	1.00	1.04	1.07	
	0.30		0.54	0.65	0.73	0.79	0.87	0.92	0.96	1.00	1.04	
	0.20		0.48	0.60	0.68	0.74	0.82	0.88	0.92	0.97	1.01	
0.50	0.50	0.20	0.60	0.70	0.77	0.82	0.89	0.93	0.96	1.00	1.02	
	0.30		0.53	0.64	0.72	0.77	0.84	0.89	0.93	0.97	1.00	
	0.20		0.48	0.59	0.67	0.73	0.81	0.86	0.89	0.94	0.98	
0.30	0.50	0.20	0.58	0.68	0.75	0.80	0.86	0.90	0.93	0.96	0.98	
	0.30		0.52	0.63	0.70	0.75	0.82	0.87	0.90	0.94	0.96	
	0.20		0.48	0.59	0.66	0.72	0.79	0.84	0.87	0.92	0.95	
0.00	0.00	0.00	0.45	0.56	0.64	0.69	0.75	0.80	0.83	0.87	0.90	
Rating: 53W Photometrically tested without ceiling board. Multiply UF values by service correction factors Calculate in accordance with CIBSE Technical Memorandum NO.5 1980												

## Utilisation Factor Table(Wall)

Utilisation Factors UF(W)			SHR NOM = 1.25									
Room Reflectance			Room Index(RI)									
Ceiling	Wall	Floor	0.75	1.00	1.25	1.50	2.00	2.50	3.00	4.00	5.00	
0.70	0.50	0.20	0.94	0.76	0.63	0.54	0.43	0.35	0.30	0.23	0.18	
	0.30		0.79	0.65	0.55	0.48	0.39	0.32	0.28	0.21	0.18	
	0.20		0.68	0.57	0.49	0.43	0.35	0.30	0.26	0.20	0.17	
0.50	0.50	0.20	0.91	0.73	0.60	0.52	0.41	0.37	0.28	0.21	0.17	
	0.30		0.77	0.63	0.53	0.46	0.37	0.31	0.26	0.20	0.17	
	0.20		0.67	0.56	0.48	0.42	0.34	0.29	0.25	0.19	0.16	
0.30	0.50	0.20	0.88	0.70	0.58	0.50	0.39	0.31	0.27	0.20	0.16	
	0.30		0.75	0.61	0.52	0.45	0.36	0.29	0.25	0.19	0.16	
	0.20		0.66	0.55	0.47	0.41	0.33	0.28	0.24	0.18	0.15	
0.00	0.00	0.00	0.55	0.44	0.37	0.32	0.25	0.21	0.17	0.13	0.11	
Rating: 53W Photometrically tested without ceiling board. Multiply UF values by service correction factors Calculate in accordance with CIBSE Technical Memorandum NO.5 1980												



## Utilisation Factor Table(Ceiling cavity)

Utilisation Factors UF(C)			SHR NOM = 1.25								
Room Reflectance			Room Index(RI)								
Ceiling	Wall	Floor	0.75	1.00	1.25	1.50	2.00	2.50	3.00	4.00	5.00
0.70	0.50	0.20	0.16	0.18	0.18	0.19	0.20	0.21	0.21	0.22	0.22
	0.30		0.10	0.12	0.13	0.14	0.16	0.17	0.18	0.19	0.20
	0.20		0.05	0.07	0.09	0.10	0.12	0.14	0.15	0.17	0.18
0.50	0.50	0.20	0.16	0.17	0.18	0.18	0.19	0.20	0.20	0.21	0.21
	0.30		0.10	0.11	0.13	0.14	0.15	0.16	0.17	0.18	0.19
	0.20		0.05	0.07	0.09	0.10	0.12	0.13	0.15	0.16	0.17
0.30	0.50	0.20	0.15	0.16	0.17	0.18	0.18	0.19	0.19	0.20	0.20
	0.30		0.10	0.11	0.12	0.13	0.15	0.16	0.17	0.18	0.18
	0.20		0.05	0.07	0.08	0.10	0.12	0.13	0.14	0.16	0.17
0.00	0.00	0.00	0.00	0.00	0.00	0.00	0.00	0.00	0.00	0.00	0.00
Rating: 53W Photometrically tested without ceiling board. Multiply UF values by service correction factors Calculate in accordance with CIBSE Technical Memorandum NO.5 1980											