

Report No.:

Test Time: 17.05.2022 10:07

## Luminaire Property

Luminaire Manufacturer: FAROS LED

Luminaire Category: FL 58 62W 4000K OPALLuminous Length (mm): 1500

Luminous Width (mm): 75

Luminous Height (mm): 60

Voltage: 221.0 V

Current: 0.291 A

Power: 64.04 W

Power Factor: 0.995

## Photometric Results

CIE Class: Direct

Measurement Flux: 7329.3 lm

Downward Ratio: 99%

Total Rated Lamp Lumens: 7329.3 lm

Efficiency: 100%

Upward Ratio: 1%

Field Angle(C0/C180,C90/C270,C45/C225,C135/315): 164.2, 162.2, 162.7, 162.7

Beam Angle(C0/C180,C90/C270,C45/C225,C135/315): 113.8, 112.1, 113.1, 113.1

Luminaire Efficacy Rating (LER): 114.50

Central Intensity: 2529 cd

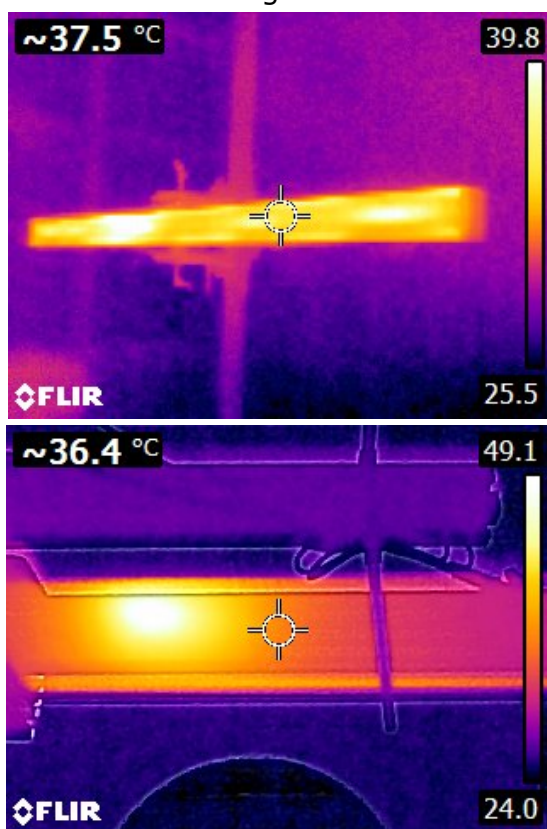
Max. Intensity: 2530.78 cd

Pos of Max. Intensity: H45 V0

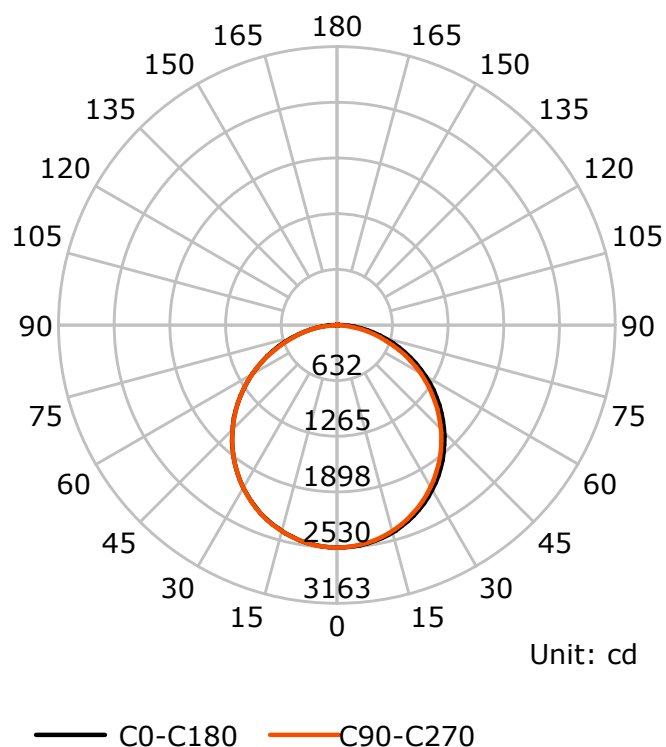
S/MH(C0/C180): 1.26

S/MH(C90/C270): 1.25

Termogramma



Luminous Intensity Distribution Curve



C Plane (°):0.0-360.0: 22.5

Test Lab: FAROS LED Lab

Test Type: TYPE C

Temperature:

Operator: Lab

Gamma Plane (°):0.0-180.0:2.0

Test Device: LSG-1800B

Distance: 12.735 m

Humidity:

Inspector:

## Lightsource Test Report

### Product Information

Product Type: FL 58 62W 4000K OPAL

Manufacturer: FAROS LED

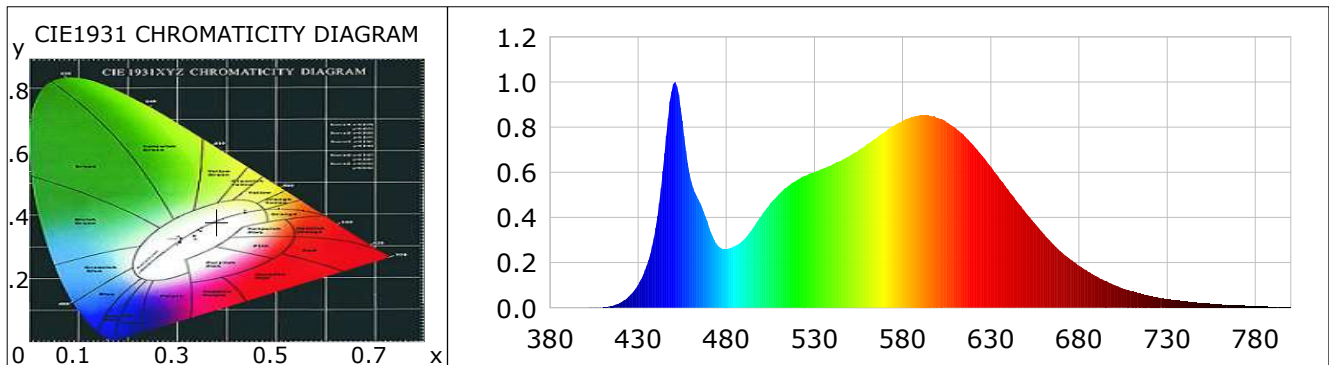
### CIE Colorimetric Parameters

Chromaticity coordinates:  $x=0.3797$   $y=0.3788$   $u(u')=0.2239$   $v=0.3349$   $v'=0.5024$   
 CCT:  $T_c=4034K$  ( $duv=0.00113$ ) Color Ratio:  $R=0.180$   $G=0.783$   $B=0.037$   
 Peak Wavelength: 450.8nm Half Bandwidth: 20.4nm  
 Dominant Wavelength: 578.3nm Color Purity: 0.276  
 CRI:  $R_a=82.4$ ,  $avgR(1\sim14)=75.6$ ,  $avgR(1\sim15)=75.5$  TM30:  $R_f=83$ ,  $R_g=95$   
 GAI:  $GAI\_BB\_8=90.2$ ,  $GAI\_BB\_15=97.3$ ,  $GAI\_EES=71.6$   

R1 =80	R2 =89	R3 =95	R4 =81	R5 =81	R6 =85	R7 =85	R8 =63
R9 =4	R10=74	R11=80	R12=61	R13=83	R14=98	R15=74	

Color Quality Scale:  $Q_a=82.3$ ,  $Q_f=82.6$ ,  $Q_p=81.7$ ,  $Q_g=91.6$   

Q1 =81	Q2 =98	Q3 =80	Q4 =76	Q5 =81	Q6 =83	Q7 =85	Q8 =89
Q9 =98	Q10=89	Q11=86	Q12=84	Q13=83	Q14=71	Q15=75	



### Photometric Parameters

Luminous Flux: Efficiency: 0.00 lm/W Radiant Power: 23.079 W  
 EEI: 0.00 Energy Efficiency Class: A++ (EU 874-2012)

### Electric Parameters

Voltage: 0.0000V Current: 0.0000A Power: 0.00W  
 Power Factor: 0.0000 Frequency: 0.00Hz

### Test Information

Scan Range: 380~800:1nm Photometric Method: sphere-spectroradiometer  
 Stabilization Time: 0 ms ALC.: 1.0000 Photometric Condition: Sphere diameter: 1.00m, 4PI  
 Max of Signal: 45839 (2947) CCD Integration Time: 87.96 ms

## Lightsource Test Report

### Product Information

Product Type: FL 58 62W 4000K OPAL

Manufacturer: FAROS LED

WL(nm)	PL	PE(mW/nm)	WL(nm)	PL	PE(mW/nm)	WL(nm)	PL	PE(mW/nm)
380	0.0005	0.0781	525	0.5853	91.8407	670	0.2476	38.8501
385	0.0005	0.0859	530	0.6013	94.3570	675	0.2146	33.6669
390	0.0006	0.0949	535	0.6173	96.8598	680	0.1870	29.3368
395	0.0002	0.0286	540	0.6347	99.5934	685	0.1614	25.3298
400	0.0010	0.1509	545	0.6521	102.3311	690	0.1397	21.9190
405	0.0017	0.2596	550	0.6751	105.9391	695	0.1191	18.6852
410	0.0029	0.4475	555	0.6980	109.5189	700	0.1009	15.8340
415	0.0091	1.4254	560	0.7263	113.9633	705	0.0865	13.5663
420	0.0233	3.6542	565	0.7516	117.9398	710	0.0736	11.5532
425	0.0518	8.1250	570	0.7796	122.3252	715	0.0626	9.8168
430	0.1016	15.9356	575	0.8053	126.3705	720	0.0531	8.3254
435	0.1904	29.8751	580	0.8296	130.1792	725	0.0457	7.1738
440	0.3568	55.9845	585	0.8443	132.4898	730	0.0388	6.0867
445	0.6856	107.5860	590	0.8540	134.0034	735	0.0329	5.1681
450	0.9919	155.6380	595	0.8511	133.5465	740	0.0297	4.6593
455	0.8298	130.2139	600	0.8424	132.1905	745	0.0243	3.8158
460	0.5622	88.2100	605	0.8216	128.9247	750	0.0210	3.2962
465	0.4665	73.1934	610	0.7971	125.0747	755	0.0181	2.8399
470	0.3629	56.9465	615	0.7623	119.6184	760	0.0156	2.4531
475	0.2774	43.5217	620	0.7218	113.2546	765	0.0137	2.1494
480	0.2613	41.0061	625	0.6746	105.8585	770	0.0111	1.7448
485	0.2749	43.1392	630	0.6243	97.9643	775	0.0094	1.4782
490	0.3029	47.5334	635	0.5728	89.8834	780	0.0074	1.1653
495	0.3526	55.3217	640	0.5215	81.8384	785	0.0062	0.9707
500	0.4093	64.2232	645	0.4695	73.6643	790	0.0055	0.8649
505	0.4632	72.6773	650	0.4196	65.8367	795	0.0046	0.7264
510	0.5055	79.3236	655	0.3726	58.4628	800	0.0029	0.4577
515	0.5385	84.4942	660	0.3278	51.4394			
520	0.5647	88.6034	665	0.2851	44.7357			

Condition: Tx:22.9°C, Ti:0.0°C, R.H.:60%  
Test Lab: FAROS LED Lab  
Operator: Lab

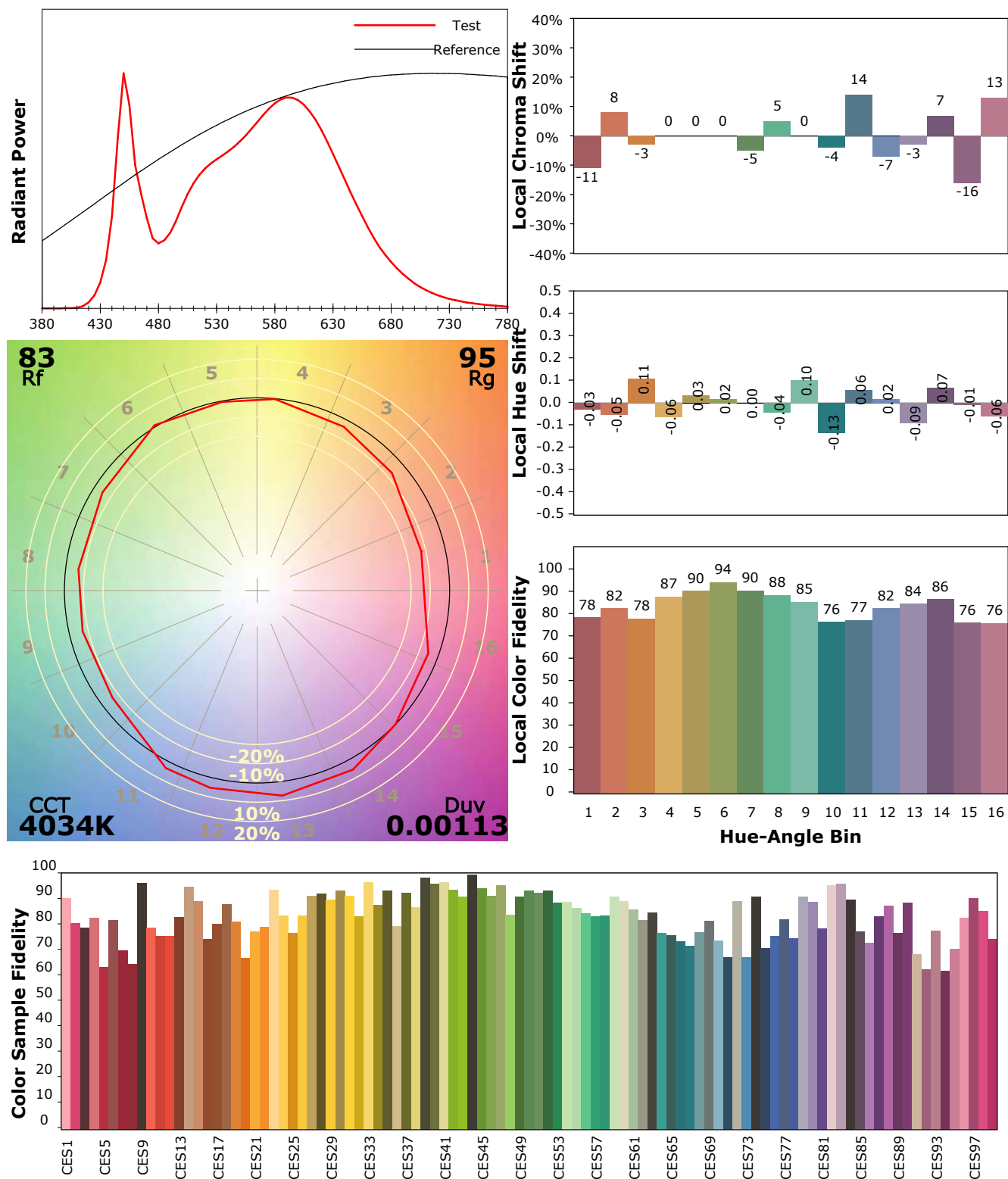
Test Device: Lisun LMS-9000A(Plus)  
Test Time: 2022-05-17 12:35:42  
Inspector:

## IES TM-30-18 Color Rendition Report

### Product Information

Product Type: FL 58 62W 4000K OPAL

Manufacturer: FAROS LED



Condition: Tx:22.9°C, Ti:0.0°C, R.H.:60%

Test Lab: FAROS LED Lab

Operator: Lab

Test Device: Lisun LMS-9000A(Plus)

Test Time: 2022-05-17 12:35:42

Inspector: