

Report No.:

Test Time: 04.04.2022 14:33

Luminaire Property

Luminaire Manufacturer: FAROS LED

Luminaire Category: FL 1500 50W 5000K PRISM

Luminous Length (mm): 1500

Luminous Width (mm): 115

Luminous Height (mm): 64

Voltage: 221.2 V

Current: 0.233 A

Power: 50.73 W

Power Factor: 0.983

Photometric Results

CIE Class: Direct

Measurement Flux: 6839.6 lm

Downward Ratio: 100%

Total Rated Lamp Lumens: 6839.6 lm

Efficiency: 100%

Upward Ratio: 0%

Field Angle(C0/C180,C90/C270,C45/C225,C135/315): 160.7, 159.9, 152.5, 152.6

Beam Angle(C0/C180,C90/C270,C45/C225,C135/315): 79.8, 82.7, 77.9, 78.6

Luminaire Efficacy Rating (LER): 134.87

Central Intensity: 3330.42 cd

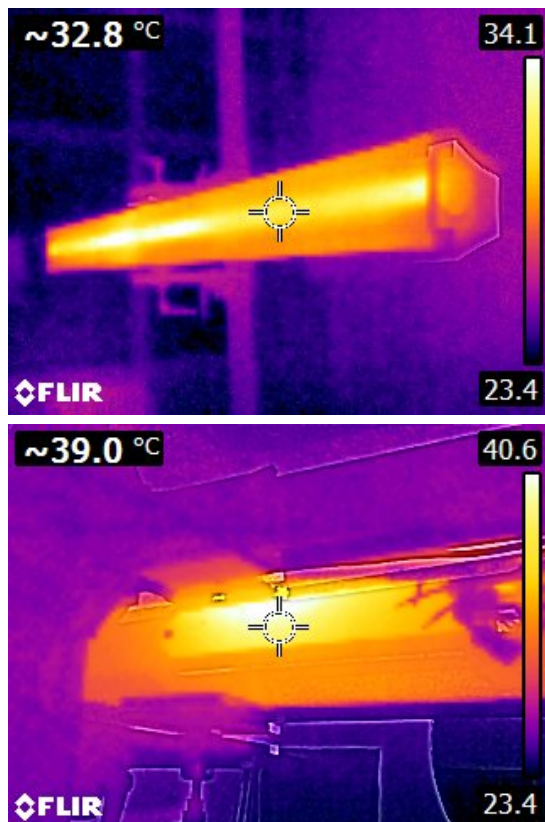
Max. Intensity: 3338.58 cd

Pos of Max. Intensity: H315 V2

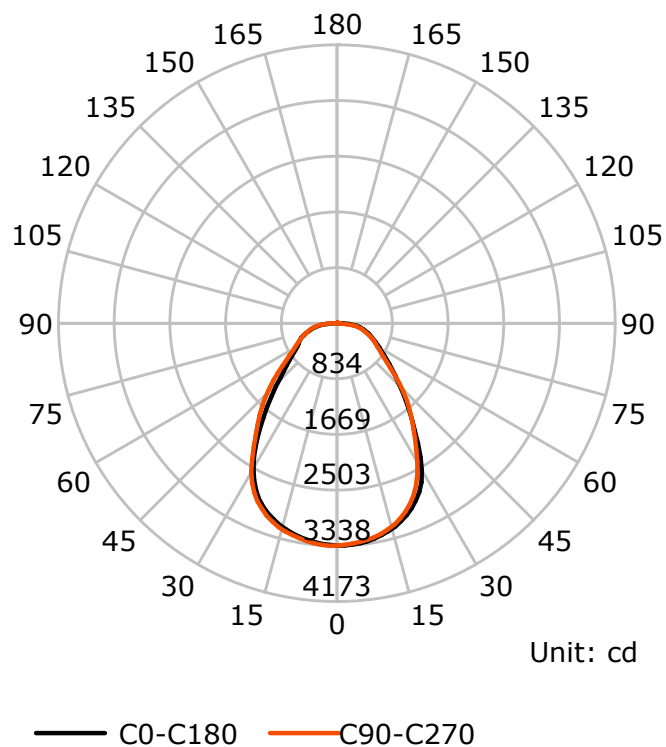
S/MH(C0/C180): 1.14

S/MH(C90/C270): 1.13

Termogramma



Luminous Intensity Distribution Curve



C Plane (°):0.0-360.0: 22.5

Test Lab: FAROS LED Lab

Test Type: TYPE C

Temperature:

Operator: Lab

Gamma Plane (°):0.0-180.0:2.0

Test Device: LSG-1800B

Distance: 12.735 m

Humidity:

Inspector:

Lightsource Test Report

Product Information

Product Type: FL 1500 50W 5000K PRISM

Manufacturer: FAROS LED

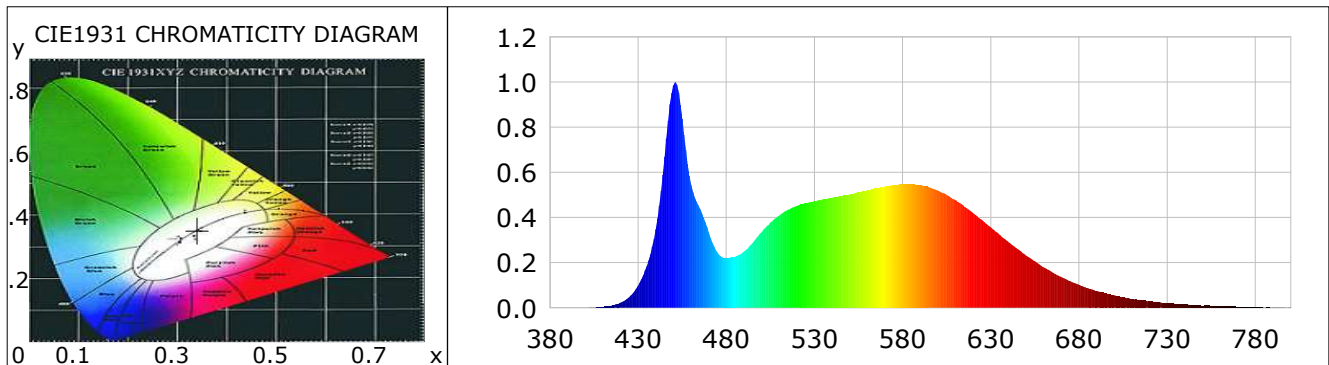
CIE Colorimetric Parameters

Chromaticity coordinates: $x=0.3401$ $y=0.3530$ $u(u')=0.2075$ $v=0.3231$ $v'=0.4846$
 CCT: $T_c=5200K$ ($duv=0.00274$) Color Ratio: $R=0.151$ $G=0.802$ $B=0.047$
 Peak Wavelength: 451.0nm Half Bandwidth: 19.0nm
 Dominant Wavelength: 566.3nm Color Purity: 0.080
 CRI: $R_a=82.3$, $avgR(1\sim14)=75.0$, $avgR(1\sim15)=75.0$ TM30: $R_f=83$, $R_g=95$
 GAI: $GAI_BB_8=91.4$, $GAI_BB_15=97.1$, $GAI_EES=82.0$

R1 =80	R2 =88	R3 =93	R4 =82	R5 =81	R6 =83	R7 =86	R8 =65
R9 =1	R10=71	R11=81	R12=60	R13=82	R14=96	R15=75	

Color Quality Scale: $Q_a=80.7$, $Q_f=80.8$, $Q_p=80.8$, $Q_g=91.8$

Q1 =82	Q2 =98	Q3 =77	Q4 =73	Q5 =79	Q6 =82	Q7 =85	Q8 =89
Q9 =97	Q10=86	Q11=82	Q12=81	Q13=80	Q14=69	Q15=74	



Photometric Parameters

Luminous Flux:
EEI: 0.00

Efficiency: 0.00 lm/W

Radiant Power: 21.500 W

Energy Efficiency Class: A++ (EU 874-2012)

Electric Parameters

Voltage: 0.0000V
Power Factor: 0.0000

Current: 0.0000A
Frequency: 0.00Hz

Power: 0.00W

Test Information

Scan Range: 380~800:1nm
 Stabilization Time: 0 ms ALC.: 1.0000
 Max of Signal: 54134 (2980)

Photometric Method: sphere-spectroradiometer
 Photometric Condition: Sphere diameter: 1.00m, 4PI
 CCD Integration Time: 78.48 ms

Lightsource Test Report

Product Information

Product Type: FL 1500 50W 5000K PRISM

Manufacturer: FAROS LED

WL(nm)	PL	PE(mW/nm)	WL(nm)	PL	PE(mW/nm)	WL(nm)	PL	PE(mW/nm)
380	0.0007	0.1355	525	0.4633	93.9738	670	0.1366	27.7085
385	0.0004	0.0897	530	0.4725	95.8570	675	0.1179	23.9169
390	0.0003	0.0618	535	0.4817	97.7099	680	0.1027	20.8309
395	0.0006	0.1282	540	0.4874	98.8746	685	0.0876	17.7676
400	0.0011	0.2307	545	0.4949	100.4023	690	0.0753	15.2791
405	0.0027	0.5510	550	0.5030	102.0285	695	0.0641	12.9942
410	0.0048	0.9734	555	0.5116	103.7871	700	0.0560	11.3596
415	0.0107	2.1612	560	0.5210	105.6868	705	0.0475	9.6269
420	0.0229	4.6507	565	0.5303	107.5810	710	0.0400	8.1226
425	0.0482	9.7757	570	0.5371	108.9448	715	0.0329	6.6679
430	0.0985	19.9850	575	0.5429	110.1318	720	0.0290	5.8789
435	0.1880	38.1447	580	0.5475	111.0549	725	0.0254	5.1455
440	0.3501	71.0118	585	0.5473	111.0313	730	0.0209	4.2479
445	0.6699	135.8891	590	0.5435	110.2618	735	0.0178	3.6175
450	0.9872	200.2562	595	0.5339	108.3114	740	0.0155	3.1356
455	0.8389	170.1711	600	0.5195	105.3919	745	0.0127	2.5764
460	0.5469	110.9435	605	0.4994	101.3142	750	0.0099	2.0026
465	0.4400	89.2510	610	0.4769	96.7434	755	0.0096	1.9535
470	0.3353	68.0092	615	0.4495	91.1754	760	0.0077	1.5651
475	0.2449	49.6784	620	0.4195	85.1035	765	0.0077	1.5708
480	0.2202	44.6663	625	0.3893	78.9734	770	0.0052	1.0600
485	0.2267	45.9956	630	0.3563	72.2739	775	0.0054	1.0973
490	0.2501	50.7279	635	0.3241	65.7430	780	0.0029	0.5799
495	0.2889	58.6091	640	0.2922	59.2713	785	0.0028	0.5620
500	0.3360	68.1539	645	0.2618	53.0987	790	0.0022	0.4520
505	0.3786	76.8024	650	0.2323	47.1137	795	0.0024	0.4936
510	0.4098	83.1288	655	0.2058	41.7417	800	0.0019	0.3835
515	0.4341	88.0681	660	0.1800	36.5088			
520	0.4516	91.6096	665	0.1572	31.8788			

Condition: Tx:23.8'C, Ti:0.0'C, R.H.:60%
Test Lab: FAROS LED Lab
Operator: Lab

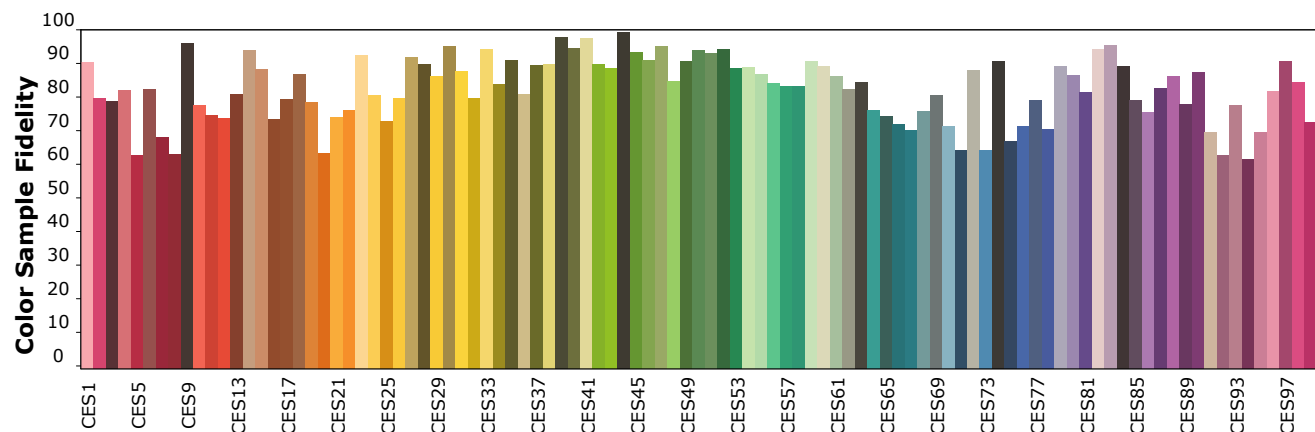
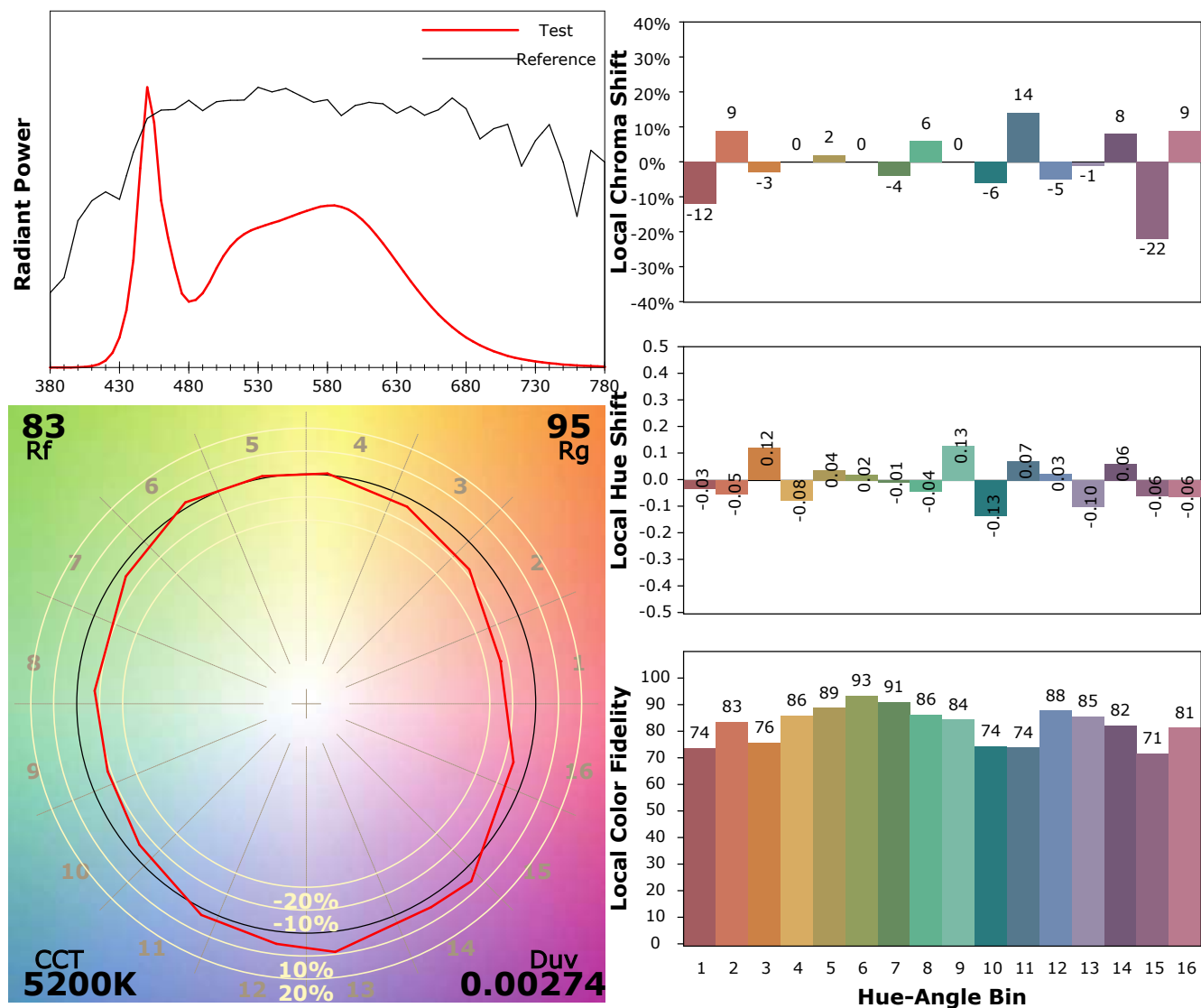
Test Device: Lisun LMS-9000A(Plus)
Test Time: 2022-04-04 16:13:16
Inspector:

IES TM-30-18 Color Rendition Report

Product Information

Product Type: FL 1500 50W 5000K PRISM

Manufacturer: FAROS LED



Condition: Tx:23.8°C, Ti:0.0°C, R.H.:60%

Test Lab: FAROS LED Lab

Operator: Lab

Test Device: Lisun LMS-9000A(Plus)

Test Time: 2022-04-04 16:13:16

Inspector: