

Report No.:

Test Time: 26.04.2022 13:08

Luminaire Property

Luminaire Manufacturer: FAROS LED

Luminaire Category: FG 60 45W 4000K OPAL

Luminous Length (mm): 1500

Luminous Height (mm): 70

Current: 0.210 A

Power Factor: 0.990

Luminous Width (mm): 60

Voltage: 221.2 V

Power: 46.11 W

Photometric Results

CIE Class: Direct

Measurement Flux: 5538.3 lm

Downward Ratio: 100%

Field Angle(C0/C180,C90/C270,C45/C225,C135/315): 164.5, 162.0, 162.6, 162.4

Beam Angle(C0/C180,C90/C270,C45/C225,C135/315): 111.5, 108.9, 110.2, 110.1

Luminaire Efficacy Rating (LER): 120.16

Max. Intensity: 1963.85 cd

S/MH(C0/C180): 1.25

Total Rated Lamp Lumens: 5538.3 lm

Efficiency: 100%

Upward Ratio: 0%

Central Intensity: 1961.55 cd

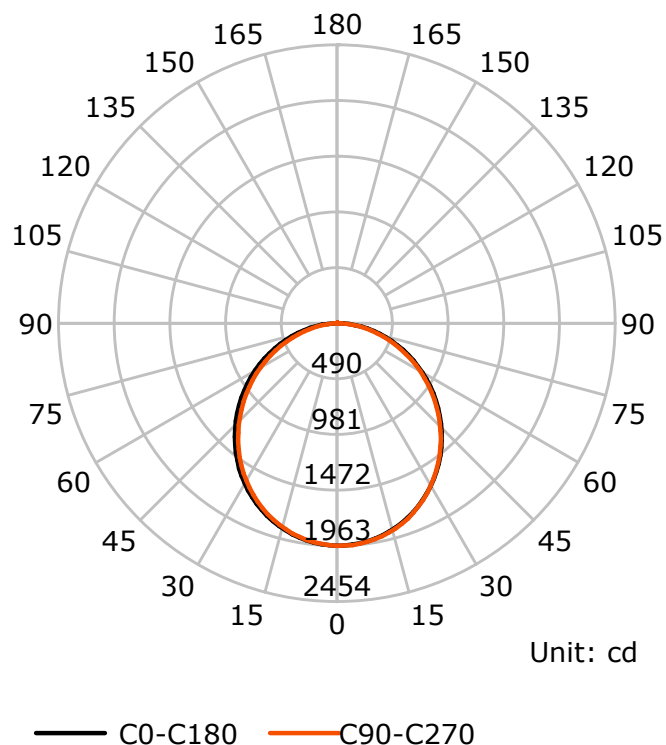
Pos of Max. Intensity: H22.5 V0

S/MH(C90/C270): 1.23

Termogramma



Luminous Intensity Distribution Curve



C Plane (°):0.0-360.0: 22.5

Test Lab: FAROS LED Lab

Test Type: TYPE C

Temperature:

Operator: Lab

Gamma Plane (°):0.0-180.0:2.0

Test Device: LSG-1800B

Distance: 12.735 m

Humidity:

Inspector:

Lightsource Test Report

Product Information

Product Type: FG 60 45W 4000K OPAL

Manufacturer: FAROS LED

CIE Colorimetric Parameters

Chromaticity coordinates: $x=0.3834$ $y=0.3853$ $u(u')=0.2237$ $v=0.3372$ $v'=0.5057$

CCT: $T_c=3983K$ ($duv=0.00310$)

Color Ratio: $R=0.180$ $G=0.781$ $B=0.039$

Peak Wavelength: 454.5nm

Half Bandwidth: 23.1nm

Dominant Wavelength: 577.6nm

Color Purity: 0.307

CRI: $R_a=81.7$, $avgR(1\sim14)=74.7$, $avgR(1\sim15)=74.6$

TM30: $R_f=82$, $R_g=92$

GAI: $GAI_BB_8=85.3$, $GAI_BB_15=93.9$, $GAI_EES=67.1$

$R_1=80$

$R_2=90$

$R_3=96$

$R_4=78$

$R_5=80$

$R_6=87$

$R_7=83$

$R_8=60$

$R_9=-1$

$R_{10}=77$

$R_{11}=77$

$R_{12}=59$

$R_{13}=83$

$R_{14}=98$

$R_{15}=72$

Color Quality Scale: $Q_a=81.8$, $Q_f=82.4$, $Q_p=79.5$, $Q_g=89.0$

$Q_1=78$

$Q_2=96$

$Q_3=83$

$Q_4=76$

$Q_5=79$

$Q_6=80$

$Q_7=83$

$Q_8=88$

$Q_9=97$

$Q_{10}=92$

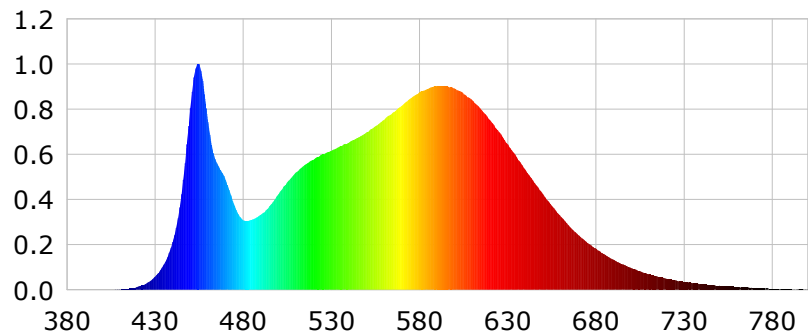
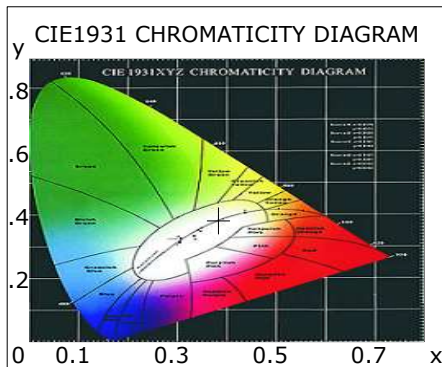
$Q_{11}=88$

$Q_{12}=85$

$Q_{13}=83$

$Q_{14}=70$

$Q_{15}=74$



Photometric Parameters

Luminous Flux:

EEI: 0.00

Efficiency: 0.00 lm/W

Energy Efficiency Class: A++ (EU 874-2012)

Radiant Power: 15.384 W

Electric Parameters

Voltage: 0.0000V

Power Factor: 0.0000

Current: 0.0000A

Frequency: 0.00Hz

Power: 0.00W

Test Information

Scan Range: 380~800:1nm

Stabilization Time: 0 ms ALC.: 1.0000

Max of Signal: 42786 (3169)

Photometric Method: sphere-spectroradiometer

Photometric Condition: Sphere diameter: 1.00m, 4PI

CCD Integration Time: 120.65 ms

Lightsource Test Report

Product Information

Product Type: FG 60 45W 4000K OPAL

Manufacturer: FAROS LED

WL(nm)	PL	PE(mW/nm)	WL(nm)	PL	PE(mW/nm)	WL(nm)	PL	PE(mW/nm)
380	0.0003	0.0270	525	0.6010	61.2073	670	0.2437	24.8196
385	0.0009	0.0956	530	0.6163	62.7594	675	0.2098	21.3664
390	0.0007	0.0743	535	0.6363	64.7957	680	0.1843	18.7668
395	0.0004	0.0380	540	0.6532	66.5170	685	0.1564	15.9280
400	0.0005	0.0484	545	0.6740	68.6364	690	0.1340	13.6451
405	0.0008	0.0846	550	0.6987	71.1520	695	0.1136	11.5710
410	0.0020	0.2061	555	0.7250	73.8323	700	0.0968	9.8551
415	0.0059	0.5989	560	0.7540	76.7870	705	0.0827	8.4240
420	0.0138	1.4042	565	0.7865	80.0942	710	0.0685	6.9800
425	0.0283	2.8843	570	0.8168	83.1795	715	0.0586	5.9630
430	0.0586	5.9678	575	0.8487	86.4240	720	0.0495	5.0394
435	0.1136	11.5644	580	0.8755	89.1596	725	0.0428	4.3547
440	0.2141	21.8047	585	0.8921	90.8474	730	0.0348	3.5454
445	0.4242	43.1966	590	0.9044	92.1025	735	0.0291	2.9664
450	0.8070	82.1756	595	0.9026	91.9118	740	0.0261	2.6585
455	1.0000	101.8343	600	0.8911	90.7461	745	0.0214	2.1798
460	0.7445	75.8108	605	0.8674	88.3296	750	0.0185	1.8859
465	0.5614	57.1726	610	0.8386	85.3974	755	0.0167	1.7032
470	0.4871	49.6010	615	0.7988	81.3452	760	0.0137	1.3920
475	0.3742	38.1090	620	0.7510	76.4785	765	0.0123	1.2523
480	0.3087	31.4320	625	0.6999	71.2770	770	0.0074	0.7506
485	0.3108	31.6490	630	0.6443	65.6111	775	0.0076	0.7713
490	0.3334	33.9566	635	0.5889	59.9658	780	0.0052	0.5321
495	0.3719	37.8688	640	0.5306	54.0382	785	0.0035	0.3592
500	0.4244	43.2187	645	0.4763	48.5080	790	0.0049	0.4975
505	0.4776	48.6342	650	0.4233	43.1017	795	0.0050	0.5041
510	0.5207	53.0283	655	0.3714	37.8175	800	0.0028	0.2867
515	0.5546	56.4722	660	0.3256	33.1562			
520	0.5784	58.8987	665	0.2804	28.5584			

Condition: Tx:26.0°C, Ti:0.0°C, R.H.:60%
Test Lab: FAROS LED Lab
Operator: Lab

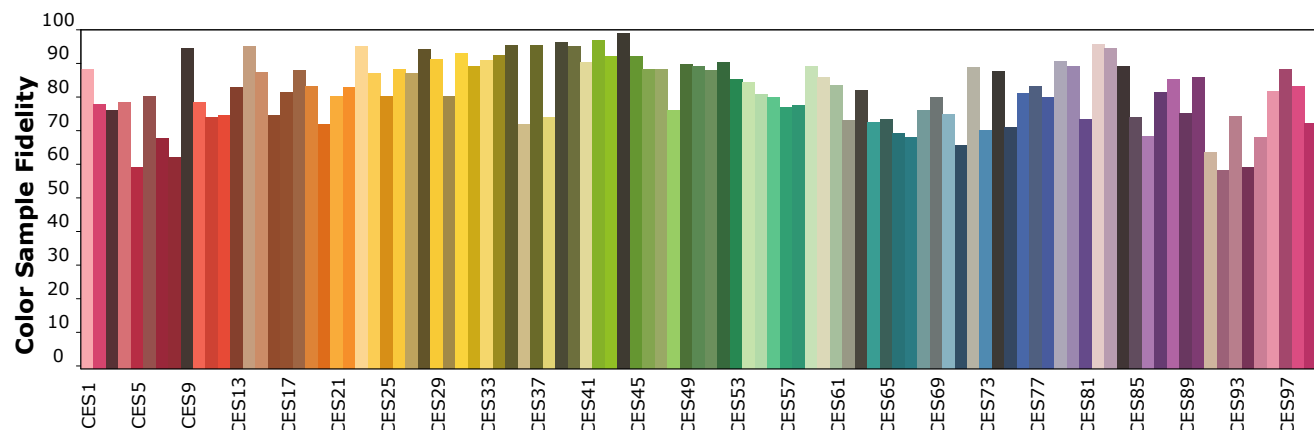
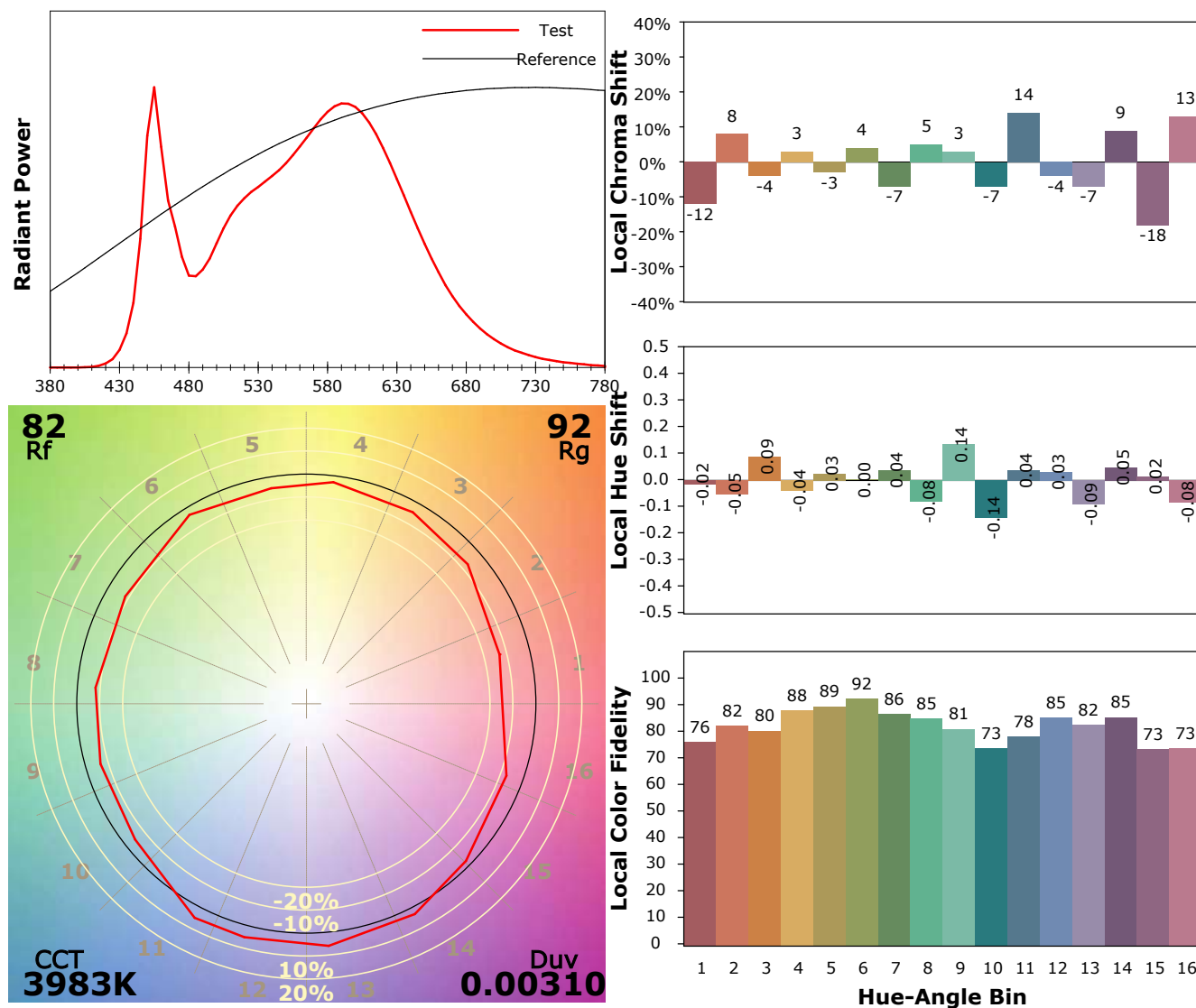
Test Device: Lisun LMS-9000A(Plus)
Test Time: 2022-04-26 16:11:57
Inspector:

IES TM-30-18 Color Rendition Report

Product Information

Product Type: FG 60 45W 4000K OPAL

Manufacturer: FAROS LED



Condition: Tx:26.0°C, Ti:0.0°C, R.H.:60%

Test Lab: FAROS LED Lab

Operator: Lab

Test Device: Lisun LMS-9000A(Plus)

Test Time: 2022-04-26 16:11:57

Inspector: