

Report No.:

Test Time: 22.06.2020 19:37

Luminaire Property

Luminaire Manufacturer: FAROS LED

Luminaire Category: FL 60 30W DESIGN 4000K OPAL

Luminous Length (mm): 950

Luminous Width (mm): 60

Luminous Height (mm): 70

Voltage: 221.3 V

Current: 0.141 A

Power: 30.20 W

Power Factor: 0.964

Photometric Results

CIE Class: Direct

Measurement Flux: 3373.7 lm

Downward Ratio: 100%

Total Rated Lamp Lumens: 3373.7 lm

Efficiency: 100%

Upward Ratio: 0%

Field Angle(C0/C180,C90/C270,C45/C225,C135/315): 164.1, 162.2, 163.0, 163.0

Beam Angle(C0/C180,C90/C270,C45/C225,C135/315): 109.6, 107.3, 108.4, 108.4

Luminaire Efficacy Rating (LER): 111.76

Central Intensity: 1211.07 cd

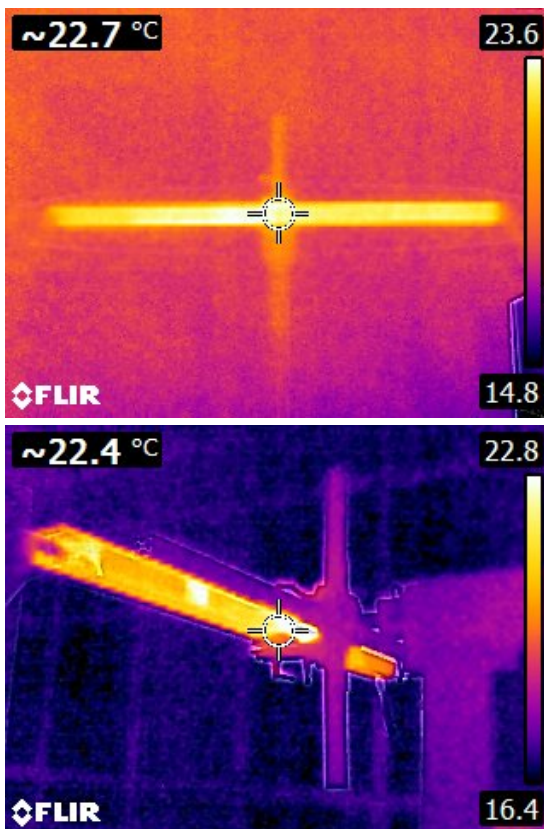
Max. Intensity: 1213.12 cd

Pos of Max. Intensity: H45 V2

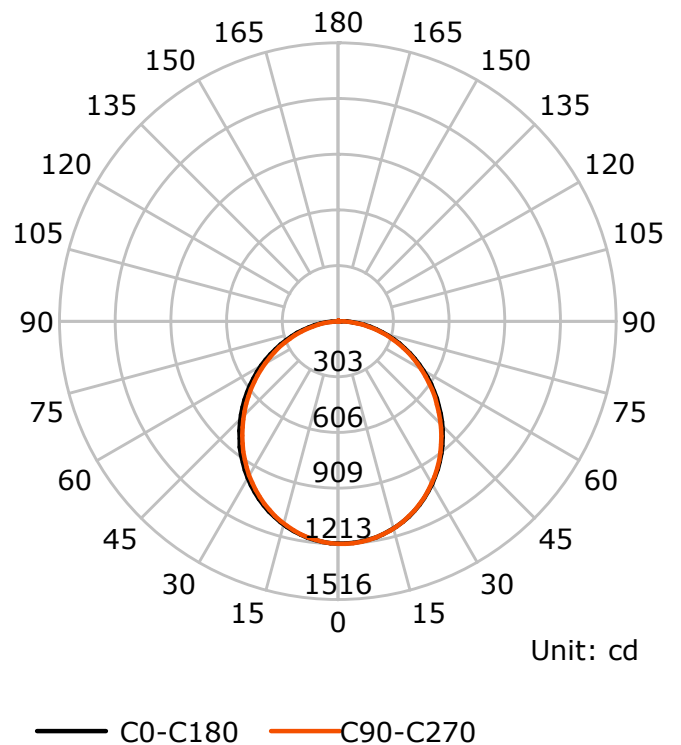
S/MH(C0/C180): 1.23

S/MH(C90/C270): 1.22

Termogramma



Luminous Intensity Distribution Curve



C Plane (°):0.0-360.0: 22.5

Test Lab: FAROS LED Lab

Test Type: TYPE C

Temperature:

Operator: Lab

Gamma Plane (°):0.0-180.0:2.0

Test Device: LSG-1800B

Distance: 12.677 m

Humidity:

Inspector: