

Report No.:

Test Time: 13.07.2022 12:52

## Luminaire Property

Luminaire Manufacturer: FAROS LED

Luminaire Category: FS 595 36W 4000K OPAL

Luminous Length (mm): 595

Luminous Height (mm): 35

Current: 0.183 A

Power Factor: 0.973

Luminous Width (mm): 595

Voltage: 221.5 V

Power: 39.63 W

## Photometric Results

CIE Class: Direct

Measurement Flux: 4053.6 lm

Downward Ratio: 100%

Field Angle(C0/C180,C90/C270,C45/C225,C135/315): 164.7, 163.9, 164.2, 164.2

Beam Angle(C0/C180,C90/C270,C45/C225,C135/315): 112.0, 111.6, 111.8, 111.9

Luminaire Efficacy Rating (LER): 102.34

Max. Intensity: 1407.74 cd

S/MH(C0/C180): 1.25

Total Rated Lamp Lumens: 4053.6 lm

Efficiency: 100%

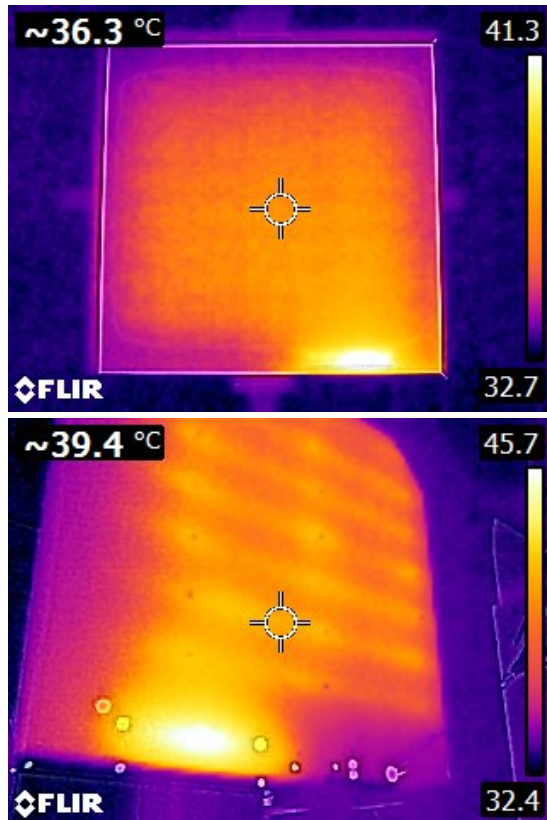
Upward Ratio: 0%

Central Intensity: 1407.32 cd

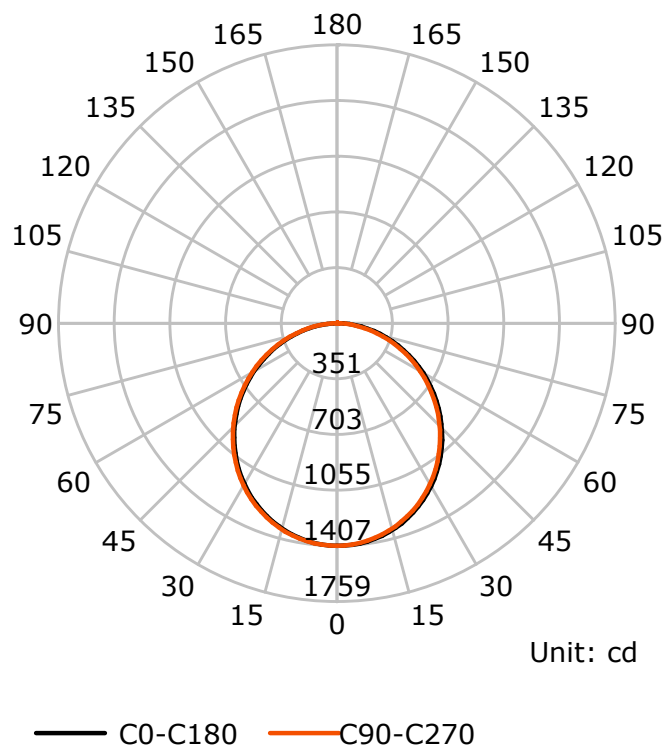
Pos of Max. Intensity: H157.5 V0

S/MH(C90/C270): 1.25

Termogramma



Luminous Intensity Distribution Curve



C Plane (°):0.0-360.0: 22.5

Test Lab: FAROS LED Lab

Test Type: TYPE C

Temperature:

Operator: Lab

Gamma Plane (°):0.0-180.0:2.0

Test Device: LSG-1800B

Distance: 12.735 m

Humidity:

Inspector:

## Lightsource Test Report

### Product Information

Product Type: FS 595 36W 4000K OPAL

Manufacturer: FAROS LED

### CIE Colorimetric Parameters

Chromaticity coordinates:  $x=0.3713$   $y=0.3735$   $u(u')=0.2204$   $v=0.3325$   $v'=0.4988$

CCT:  $T_c=4235K$  ( $duv=0.00126$ )

Color Ratio:  $R=0.193$   $G=0.756$   $B=0.051$

Peak Wavelength: 452.0nm

Half Bandwidth: 26.6nm

Dominant Wavelength: 577.4nm

Color Purity: 0.235

CRI:  $R_a=93.3$ ,  $avgR(1\sim14)=90.8$ ,  $avgR(1\sim15)=90.8$

TM30:  $R_f=89$ ,  $R_g=96$

GAI:  $GAI\_BB\_8=94.0$ ,  $GAI\_BB\_15=99.9$ ,  $GAI\_EES=77.4$

$R_1=95$

$R_2=100$

$R_3=97$

$R_4=92$

$R_5=94$

$R_6=96$

$R_7=90$

$R_8=83$

$R_9=63$

$R_{10}=98$

$R_{11}=95$

$R_{12}=73$

$R_{13}=97$

$R_{14}=99$

$R_{15}=91$

Color Quality Scale:  $Q_a=92.4$ ,  $Q_f=92.3$ ,  $Q_p=91.9$ ,  $Q_g=95.3$

$Q_1=86$

$Q_2=95$

$Q_3=93$

$Q_4=89$

$Q_5=90$

$Q_6=91$

$Q_7=95$

$Q_8=96$

$Q_9=96$

$Q_{10}=97$

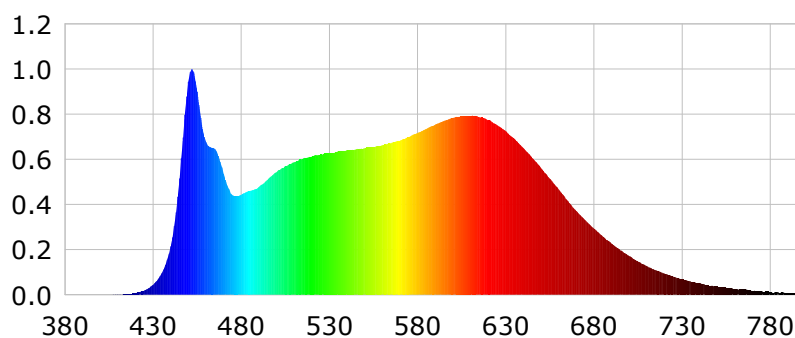
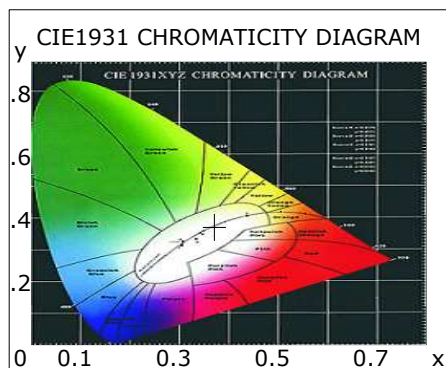
$Q_{11}=99$

$Q_{12}=98$

$Q_{13}=96$

$Q_{14}=90$

$Q_{15}=89$



### Photometric Parameters

Luminous Flux:

EEI: 0.00

Efficiency: 0.00 lm/W

Radiant Power: 13.306 W

Energy Efficiency Class: A++ (EU 874-2012)

### Electric Parameters

Voltage: 0.0000V

Power Factor: 0.0000

Current: 0.0000A

Frequency: 0.00Hz

Power: 0.00W

### Test Information

Scan Range: 380~800:1nm

Stabilization Time: 0 ms ALC.: 1.0000

Max of Signal: 45208 (3467)

Photometric Method: sphere-spectroradiometer

Photometric Condition: Sphere diameter: 1.00m, 4PI

CCD Integration Time: 174.47 ms

Condition:  $T_x=29.1^{\circ}C$ ,  $T_i=0.0^{\circ}C$ , R.H.:60%

Test Lab: FAROS LED Lab

Operator: Lab

Test Device: Lisun LMS-9000A(Plus)

Test Time: 2022-07-13 13:36:17

Inspector:

## Lightsource Test Report

### Product Information

Product Type: FS 595 36W 4000K OPAL

Manufacturer: FAROS LED

WL(nm)	PL	PE(mW/nm)	WL(nm)	PL	PE(mW/nm)	WL(nm)	PL	PE(mW/nm)
380	0.0014	0.1195	525	0.6221	51.4793	670	0.3720	30.7865
385	0.0013	0.1066	530	0.6278	51.9527	675	0.3311	27.4014
390	0.0008	0.0649	535	0.6357	52.6060	680	0.2936	24.2969
395	0.0002	0.0185	540	0.6415	53.0832	685	0.2583	21.3743
400	0.0007	0.0581	545	0.6451	53.3798	690	0.2282	18.8803
405	0.0012	0.0979	550	0.6505	53.8292	695	0.1980	16.3814
410	0.0015	0.1266	555	0.6557	54.2610	700	0.1721	14.2441
415	0.0041	0.3390	560	0.6635	54.9034	705	0.1478	12.2333
420	0.0095	0.7839	565	0.6731	55.7017	710	0.1275	10.5503
425	0.0198	1.6345	570	0.6828	56.4978	715	0.1093	9.0448
430	0.0448	3.7080	575	0.6983	57.7872	720	0.0942	7.7937
435	0.0987	8.1694	580	0.7167	59.3058	725	0.0812	6.7214
440	0.2167	17.9323	585	0.7356	60.8682	730	0.0683	5.6493
445	0.5172	42.7980	590	0.7547	62.4478	735	0.0589	4.8726
450	0.9451	78.2060	595	0.7715	63.8431	740	0.0533	4.4098
455	0.9013	74.5853	600	0.7843	64.8991	745	0.0419	3.4704
460	0.6773	56.0483	605	0.7904	65.4033	750	0.0357	2.9573
465	0.6456	53.4242	610	0.7916	65.5076	755	0.0324	2.6851
470	0.5373	44.4644	615	0.7883	65.2284	760	0.0269	2.2235
475	0.4422	36.5934	620	0.7728	63.9492	765	0.0232	1.9222
480	0.4438	36.7234	625	0.7527	62.2868	770	0.0183	1.5150
485	0.4605	38.1068	630	0.7255	60.0325	775	0.0158	1.3074
490	0.4788	39.6206	635	0.6908	57.1634	780	0.0102	0.8415
495	0.5119	42.3631	640	0.6506	53.8404	785	0.0094	0.7783
500	0.5442	45.0303	645	0.6061	50.1586	790	0.0088	0.7282
505	0.5712	47.2706	650	0.5615	46.4677	795	0.0089	0.7388
510	0.5884	48.6932	655	0.5148	42.5967	800	0.0068	0.5607
515	0.6035	49.9365	660	0.4670	38.6438			
520	0.6138	50.7956	665	0.4178	34.5689			

Condition: Tx:29.1'C, Ti:0.0'C, R.H.:60%  
Test Lab: FAROS LED Lab  
Operator: Lab

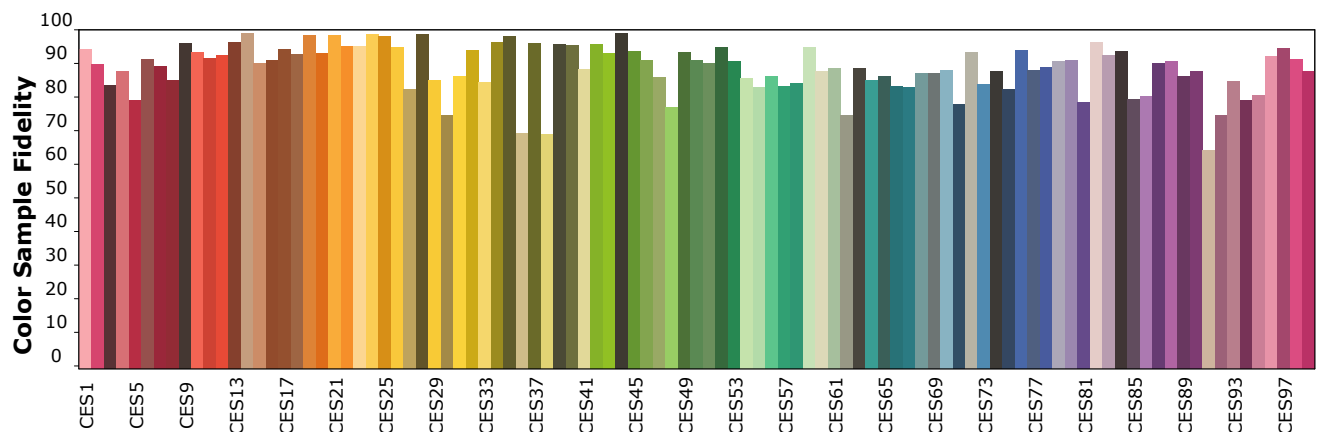
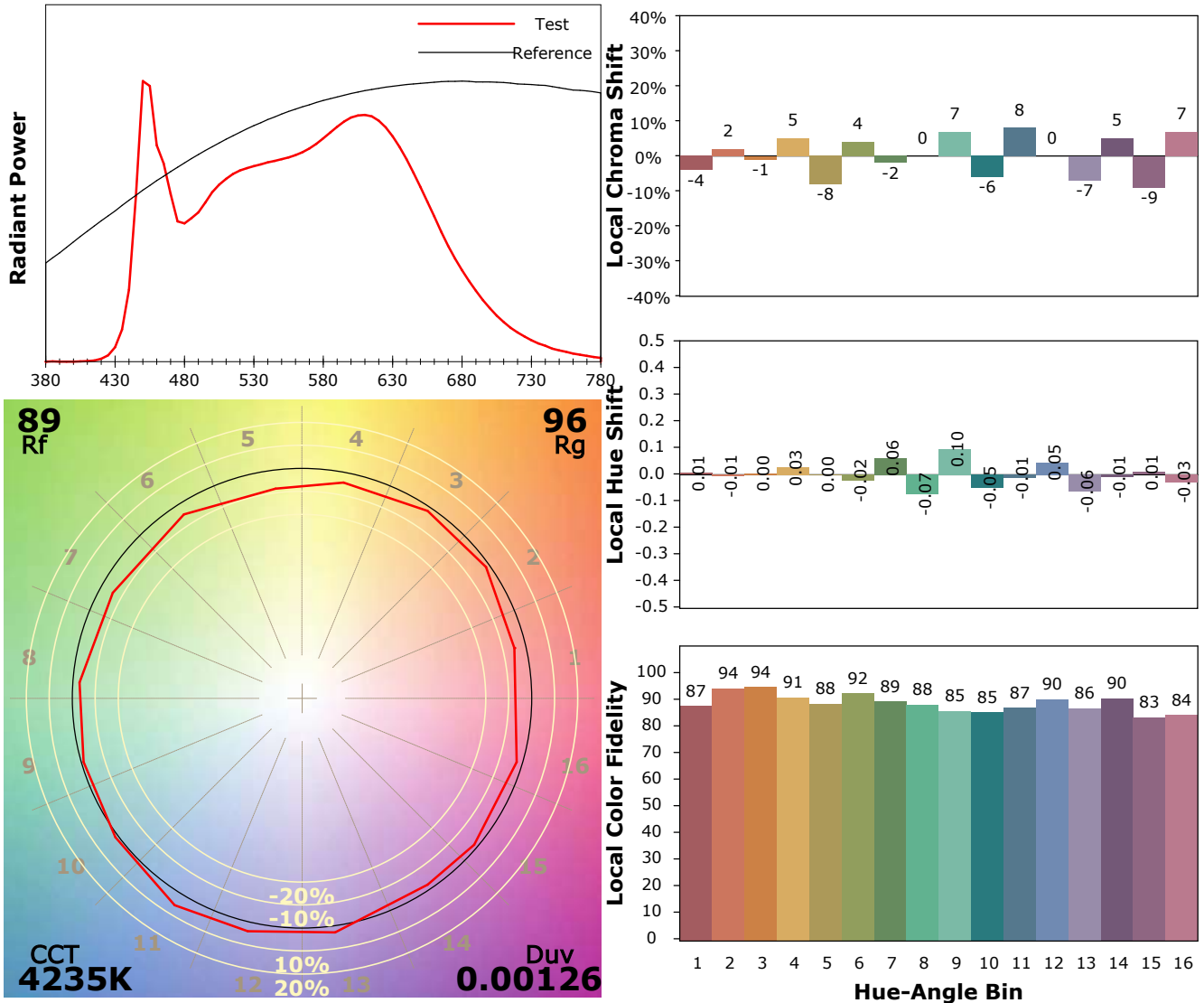
Test Device: Lisun LMS-9000A(Plus)  
Test Time: 2022-07-13 13:36:17  
Inspector:

## IES TM-30-18 Color Rendition Report

### Product Information

Product Type: FS 595 36W 4000K OPAL

Manufacturer: FAROS LED



Condition: Tx:29.1°C, Ti:0.0°C, R.H.:60%

Test Lab: FAROS LED Lab

Operator: Lab

Test Device: Lisun LMS-9000A(Plus)

Test Time: 2022-07-13 13:36:17

Inspector: