

Report No.:

Test Time: 13.07.2022 11:19

Luminaire Property

Luminaire Manufacturer: FAROS LED

Luminaire Category: FI 135 49W 5000K OPAL

Luminous Length (mm): 1280

Luminous Height (mm): 100

Current: 0.217 A

Power Factor: 0.982

Luminous Width (mm): 135

Voltage: 221.5 V

Power: 47.34 W

Photometric Results

CIE Class: Direct

Measurement Flux: 6007 lm

Downward Ratio: 94%

Field Angle(C0/C180,C90/C270,C45/C225,C135/315): 159.4, 211.2, 186.9, 187.2

Beam Angle(C0/C180,C90/C270,C45/C225,C135/315): 108.7, 123.8, 115.4, 115.5

Luminaire Efficacy Rating (LER): 126.94

Max. Intensity: 1815.19 cd

S/MH(C0/C180): 1.23

Total Rated Lamp Lumens: 6007.0 lm

Efficiency: 100%

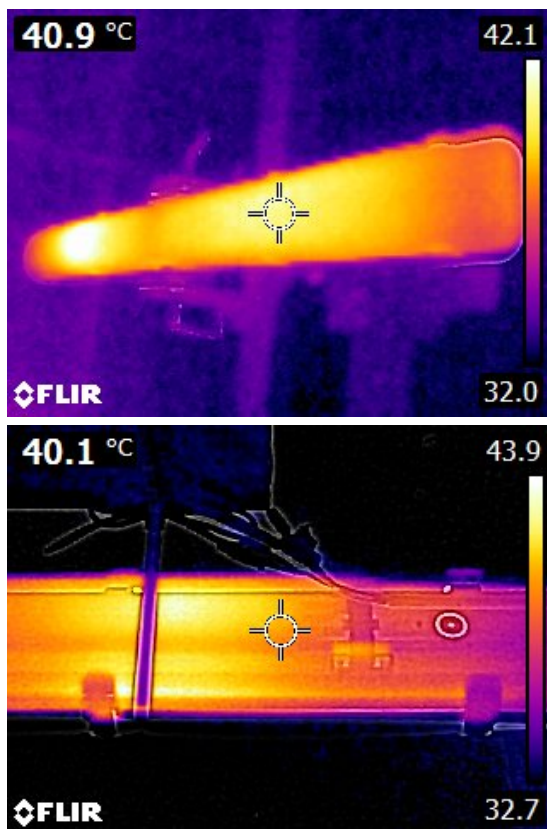
Upward Ratio: 6%

Central Intensity: 1815.18 cd

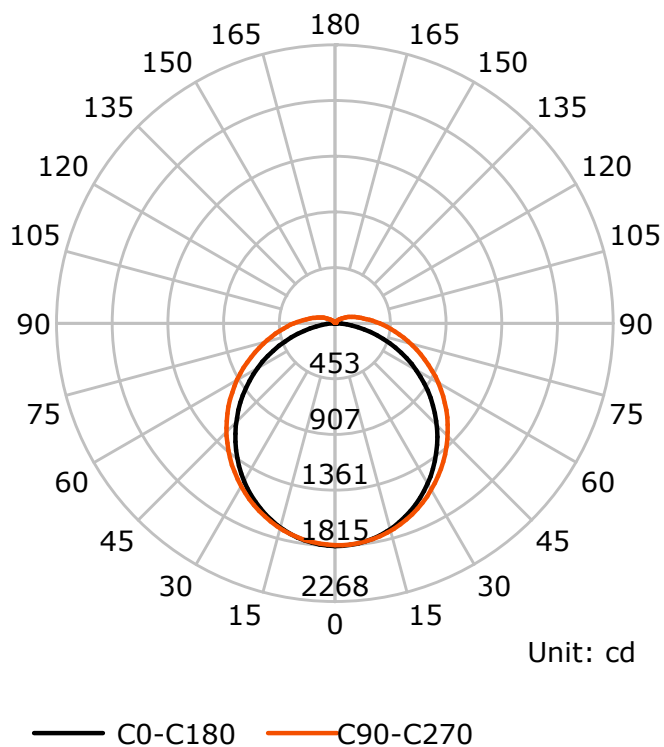
Pos of Max. Intensity: H0 V0

S/MH(C90/C270): 1.28

Termogramma



Luminous Intensity Distribution Curve



C Plane (°):0.0-360.0: 22.5

Test Lab: FAROS LED Lab

Test Type: TYPE C

Temperature:

Operator: Lab

Gamma Plane (°):0.0-180.0:2.0

Test Device: LSG-1800B

Distance: 12.735 m

Humidity:

Inspector:

Lightsource Test Report

Product Information

Product Type: FI 135 49W 5000K OPAL

Manufacturer: FAROS LED

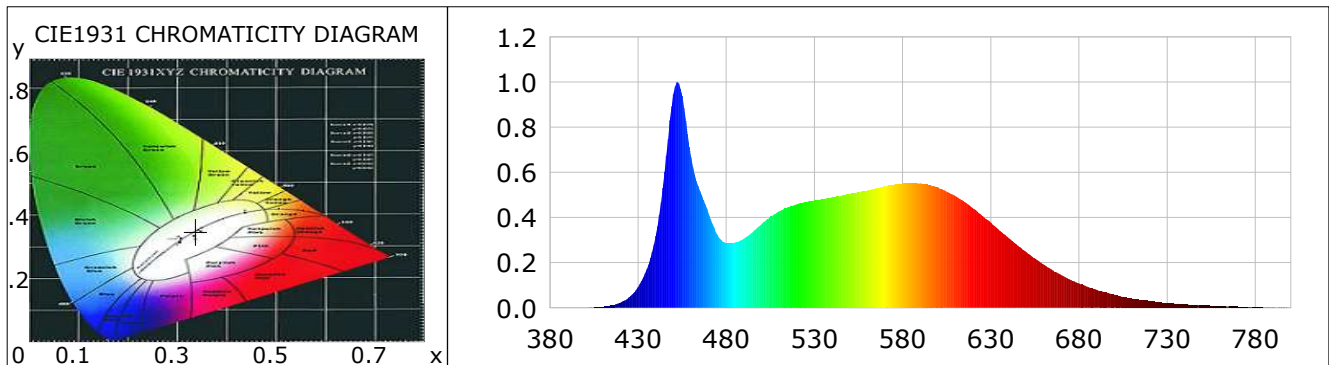
CIE Colorimetric Parameters

Chromaticity coordinates: $x=0.3369$ $y=0.3482$ $u(u')=0.2072$ $v=0.3212$ $v'=0.4818$
 CCT: $T_c=5318K$ ($duv=0.00167$) Color Ratio: $R=0.154$ $G=0.792$ $B=0.053$
 Peak Wavelength: 452.3nm Half Bandwidth: 22.5nm
 Dominant Wavelength: 563.4nm Color Purity: 0.056
 CRI: $R_a=85.3$, $avgR(1\sim14)=79.3$, $avgR(1\sim15)=79.2$ TM30: $R_f=85$, $R_g=95$
 GAI: $GAI_BB_8=92.6$, $GAI_BB_15=97.9$, $GAI_EES=83.9$

R1 =84	R2 =92	R3 =95	R4 =84	R5 =85	R6 =88	R7 =86	R8 =69
R9 =14	R10=80	R11=84	R12=65	R13=87	R14=98	R15=79	

Color Quality Scale: $Q_a=83.1$, $Q_f=83.3$, $Q_p=82.7$, $Q_g=92.3$

Q1 =83	Q2 =98	Q3 =81	Q4 =76	Q5 =81	Q6 =84	Q7 =87	Q8 =90
Q9 =98	Q10=90	Q11=85	Q12=83	Q13=83	Q14=73	Q15=77	



Photometric Parameters

Luminous Flux: Efficiency: 0.00 lm/W Radiant Power: 19.164 W
 EEI: 0.00 Energy Efficiency Class: A++ (EU 874-2012)

Electric Parameters

Voltage: 0.0000V Current: 0.0000A Power: 0.00W
 Power Factor: 0.0000 Frequency: 0.00Hz

Test Information

Scan Range: 380~800:1nm Photometric Method: sphere-spectroradiometer
 Stabilization Time: 0 ms ALC.: 1.0000 Photometric Condition: Sphere diameter: 1.00m, 4PI
 Max of Signal: 44913 (3327) CCD Integration Time: 82.24 ms

Lightsource Test Report

Product Information

Product Type: FI 135 49W 5000K OPAL

Manufacturer: FAROS LED

WL(nm)	PL	PE(mW/nm)	WL(nm)	PL	PE(mW/nm)	WL(nm)	PL	PE(mW/nm)
380	0.0008	0.1416	525	0.4684	81.0418	670	0.1450	25.0823
385	0.0006	0.1090	530	0.4758	82.3124	675	0.1258	21.7697
390	0.0006	0.0986	535	0.4829	83.5467	680	0.1083	18.7353
395	0.0004	0.0623	540	0.4902	84.8108	685	0.0932	16.1168
400	0.0013	0.2185	545	0.4957	85.7657	690	0.0805	13.9214
405	0.0030	0.5251	550	0.5031	87.0370	695	0.0686	11.8658
410	0.0053	0.9166	555	0.5120	88.5751	700	0.0585	10.1201
415	0.0120	2.0678	560	0.5206	90.0623	705	0.0489	8.4670
420	0.0237	4.0931	565	0.5295	91.6088	710	0.0424	7.3292
425	0.0475	8.2156	570	0.5375	92.9975	715	0.0350	6.0631
430	0.0925	16.0048	575	0.5447	94.2367	720	0.0303	5.2342
435	0.1732	29.9649	580	0.5508	95.2999	725	0.0258	4.4562
440	0.3198	55.3330	585	0.5531	95.6946	730	0.0220	3.8061
445	0.6037	104.4391	590	0.5522	95.5306	735	0.0177	3.0585
450	0.9464	163.7375	595	0.5439	94.1052	740	0.0156	2.6972
455	0.9393	162.5169	600	0.5336	92.3173	745	0.0123	2.1226
460	0.6685	115.6561	605	0.5149	89.0774	750	0.0108	1.8644
465	0.5190	89.7931	610	0.4948	85.5990	755	0.0099	1.7150
470	0.4179	72.3031	615	0.4702	81.3492	760	0.0081	1.3930
475	0.3229	55.8636	620	0.4408	76.2601	765	0.0077	1.3363
480	0.2860	49.4826	625	0.4099	70.9224	770	0.0059	1.0231
485	0.2895	50.0862	630	0.3775	65.3185	775	0.0045	0.7820
490	0.3069	53.0984	635	0.3430	59.3424	780	0.0035	0.6084
495	0.3360	58.1266	640	0.3105	53.7224	785	0.0022	0.3888
500	0.3706	64.1232	645	0.2779	48.0868	790	0.0024	0.4103
505	0.4049	70.0456	650	0.2471	42.7496	795	0.0027	0.4736
510	0.4270	73.8799	655	0.2188	37.8554	800	0.0020	0.3406
515	0.4466	77.2622	660	0.1916	33.1407			
520	0.4594	79.4838	665	0.1665	28.8104			

Condition: Tx:28.5'C, Ti:0.0'C, R.H.:60%
Test Lab: FAROS LED Lab
Operator: Lab

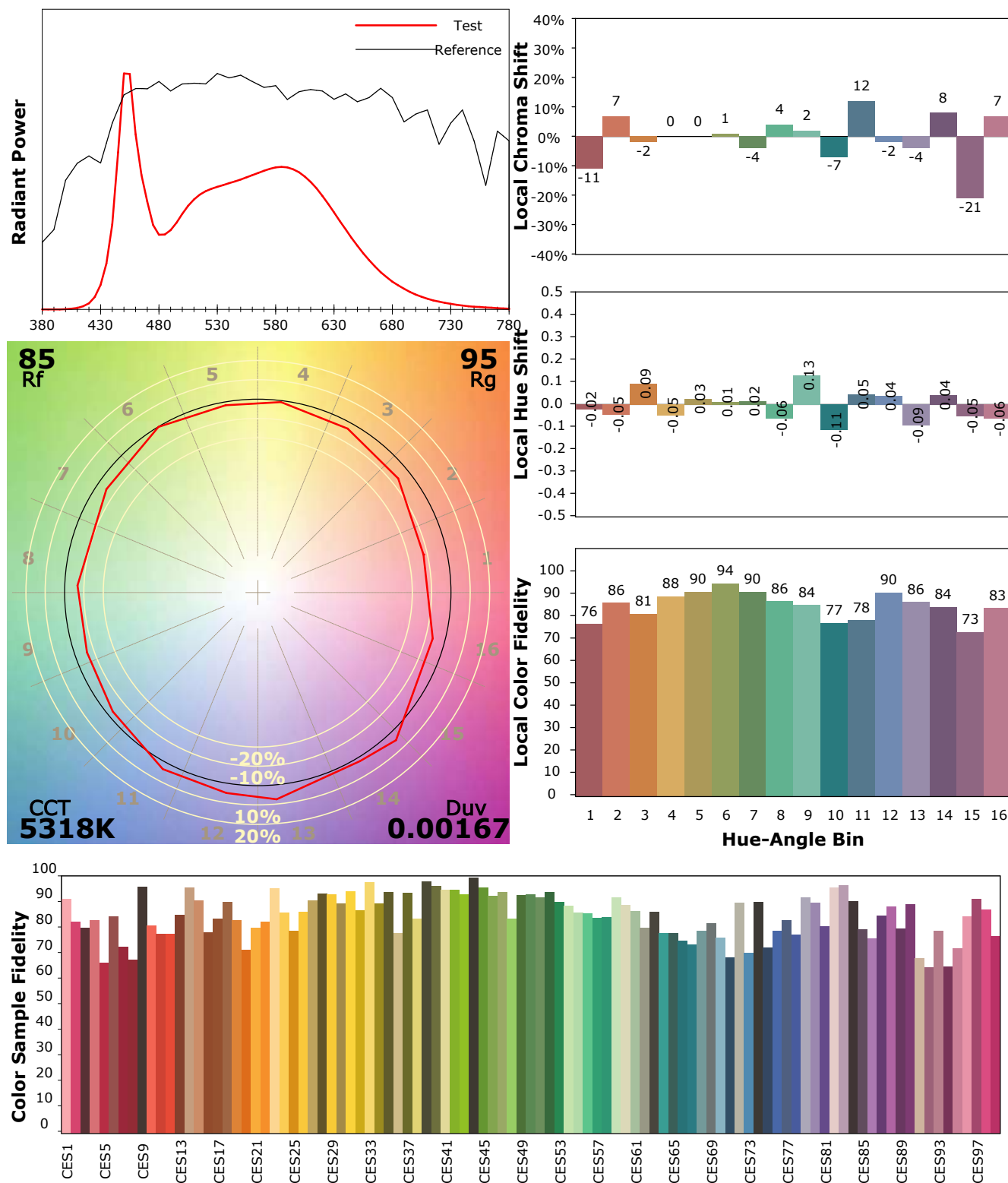
Test Device: Lisun LMS-9000A(Plus)
Test Time: 2022-07-13 11:50:19
Inspector:

IES TM-30-18 Color Rendition Report

Product Information

Product Type: FI 135 49W 5000K OPAL

Manufacturer: FAROS LED



Condition: Tx:28.5°C, Ti:0.0°C, R.H.:60%

Test Lab: FAROS LED Lab

Operator: Lab

Test Device: Lisun LMS-9000A(Plus)

Test Time: 2022-07-13 11:50:19

Inspector: