

Report No.:

Test Time: 03.03.2022 14:42

Luminaire Property

Luminaire Manufacturer: FAROS LED

Luminaire Category: FI 595 IP54 36W 4000K PRISM

Luminous Length (mm): 595

Luminous Width (mm): 595

Luminous Height (mm): 42

Voltage: 221.2 V

Current: 0.163 A

Power: 34.93 W

Power Factor: 0.966

Photometric Results

CIE Class: Direct

Measurement Flux: 4297.6 lm

Downward Ratio: 100%

Total Rated Lamp Lumens: 4297.6 lm

Efficiency: 100%

Upward Ratio: 0%

Field Angle(C0/C180,C90/C270,C45/C225,C135/315): 163.0, 160.9, 154.0, 154.6

Beam Angle(C0/C180,C90/C270,C45/C225,C135/315): 83.5, 79.4, 77.6, 77.8

Luminaire Efficacy Rating (LER): 123.09

Central Intensity: 2094.21 cd

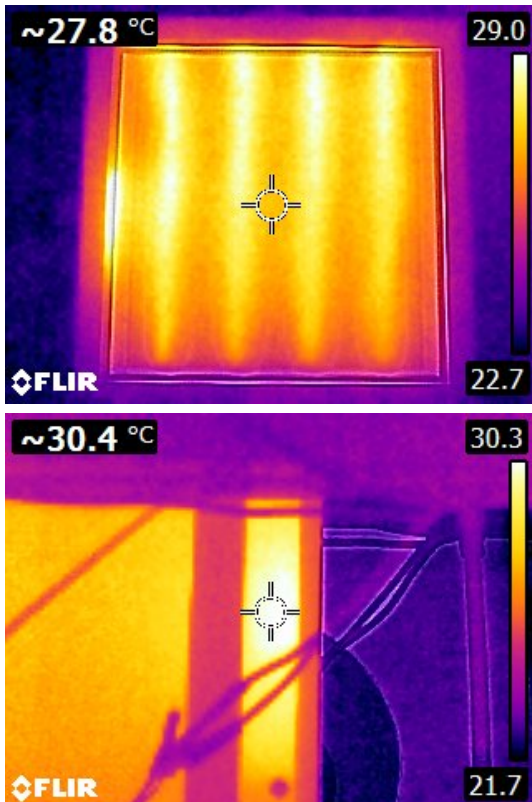
Max. Intensity: 2095.87 cd

Pos of Max. Intensity: H0 V4

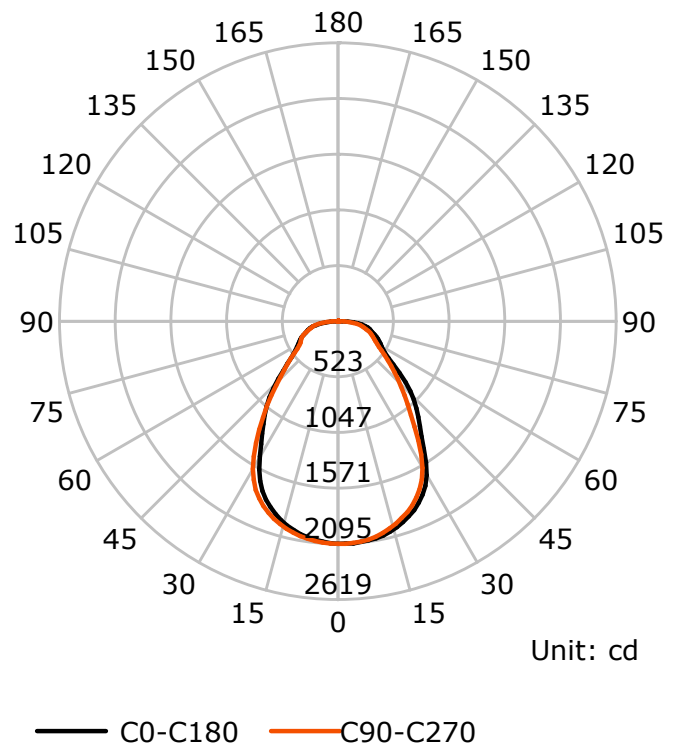
S/MH(C0/C180): 1.14

S/MH(C90/C270): 1.15

Termogramma



Luminous Intensity Distribution Curve



C Plane (°):0.0-360.0: 22.5

Test Lab: FAROS LED Lab

Test Type: TYPE C

Temperature:

Operator: Lab

Gamma Plane (°):0.0-180.0:2.0

Test Device: LSG-1800B

Distance: 12.735 m

Humidity:

Inspector:

Lightsource Test Report

Product Information

Product Type: FI 595 IP54 36W 4000K PRISM

Manufacturer: FAROS LED

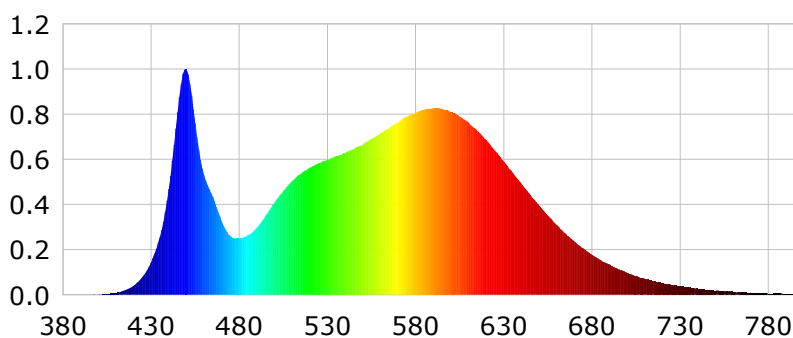
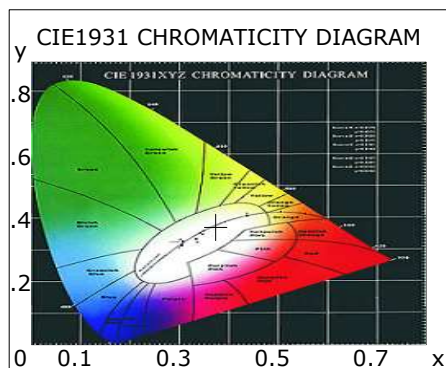
CIE Colorimetric Parameters

Chromaticity coordinates: $x=0.3737$ $y=0.3737$ $u(u')=0.2219$ $v=0.3328$ $v'=0.4992$
 CCT: $T_c=4168K$ ($duv=0.00061$) Color Ratio: $R=0.176$ $G=0.787$ $B=0.037$
 Peak Wavelength: 449.5nm Half Bandwidth: 20.8nm
 Dominant Wavelength: 578.0nm Color Purity: 0.243
 CRI: $R_a=82.0$, $avgR(1\sim14)=75.1$, $avgR(1\sim15)=75.0$ TM30: $R_f=83$, $R_g=95$
 GAI: $GAI_BB_8=91.3$, $GAI_BB_15=97.6$, $GAI_EES=74.4$

R1 =80	R2 =88	R3 =94	R4 =81	R5 =81	R6 =84	R7 =85	R8 =63
R9 =2	R10=72	R11=80	R12=61	R13=82	R14=97	R15=74	

Color Quality Scale: $Q_a=81.8$, $Q_f=82.0$, $Q_p=81.7$, $Q_g=92.1$

Q1 =81	Q2 =99	Q3 =79	Q4 =76	Q5 =81	Q6 =83	Q7 =85	Q8 =89
Q9 =98	Q10=88	Q11=84	Q12=83	Q13=82	Q14=70	Q15=74	



Photometric Parameters

Luminous Flux:
EEI: 0.00

Efficiency: 0.00 lm/W

Radiant Power: 12.181 W

Energy Efficiency Class: A++ (EU 874-2012)

Electric Parameters

Voltage: 0.0000V
Power Factor: 0.0000

Current: 0.0000A
Frequency: 0.00Hz

Power: 0.00W

Test Information

Scan Range: 380~800:1nm
Stabilization Time: 0 ms ALC.: 1.0000
Max of Signal: 45463 (3076)

Photometric Method: sphere-spectroradiometer
Photometric Condition: Sphere diameter: 1.00m, 4PI
CCD Integration Time: 163.99 ms

Lightsource Test Report

Product Information

Product Type: FI 595 IP54 36W 4000K PRISM

Manufacturer: FAROS LED

WL(nm)	PL	PE(mW/nm)	WL(nm)	PL	PE(mW/nm)	WL(nm)	PL	PE(mW/nm)
380	0.0006	0.0534	525	0.5834	49.0825	670	0.2371	19.9497
385	0.0014	0.1219	530	0.5973	50.2549	675	0.2060	17.3336
390	0.0007	0.0610	535	0.6154	51.7774	680	0.1786	15.0290
395	0.0004	0.0326	540	0.6282	52.8526	685	0.1535	12.9172
400	0.0015	0.1270	545	0.6464	54.3892	690	0.1348	11.3410
405	0.0044	0.3720	550	0.6658	56.0162	695	0.1146	9.6391
410	0.0089	0.7467	555	0.6910	58.1356	700	0.0992	8.3482
415	0.0203	1.7066	560	0.7149	60.1516	705	0.0843	7.0887
420	0.0406	3.4144	565	0.7388	62.1623	710	0.0719	6.0466
425	0.0781	6.5679	570	0.7640	64.2817	715	0.0603	5.0710
430	0.1446	12.1632	575	0.7881	66.3109	720	0.0524	4.4111
435	0.2590	21.7897	580	0.8061	67.8213	725	0.0443	3.7289
440	0.4696	39.5144	585	0.8203	69.0159	730	0.0376	3.1649
445	0.8103	68.1813	590	0.8280	69.6676	735	0.0318	2.6752
450	1.0000	84.1385	595	0.8237	69.3056	740	0.0274	2.3078
455	0.7605	63.9842	600	0.8095	68.1141	745	0.0223	1.8755
460	0.5306	44.6424	605	0.7899	66.4642	750	0.0184	1.5514
465	0.4345	36.5595	610	0.7639	64.2753	755	0.0172	1.4466
470	0.3276	27.5657	615	0.7266	61.1345	760	0.0147	1.2374
475	0.2599	21.8681	620	0.6867	57.7758	765	0.0119	1.0024
480	0.2488	20.9315	625	0.6390	53.7607	770	0.0099	0.8356
485	0.2646	22.2656	630	0.5910	49.7235	775	0.0094	0.7945
490	0.2981	25.0799	635	0.5424	45.6369	780	0.0049	0.4087
495	0.3521	29.6246	640	0.4926	41.4430	785	0.0061	0.5099
500	0.4083	34.3575	645	0.4434	37.3040	790	0.0044	0.3679
505	0.4608	38.7691	650	0.3962	33.3369	795	0.0054	0.4550
510	0.5050	42.4903	655	0.3514	29.5654	800	0.0023	0.1945
515	0.5371	45.1878	660	0.3105	26.1240			
520	0.5632	47.3847	665	0.2714	22.8345			

Condition: Tx:24.3°C, Ti:0.0°C, R.H.:60%
Test Lab: FAROS LED Lab
Operator: Lab

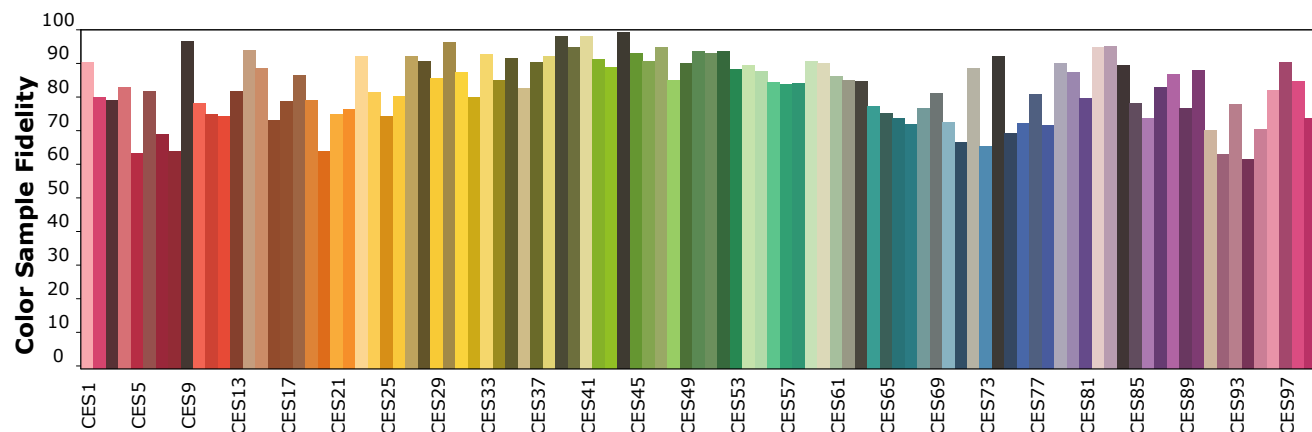
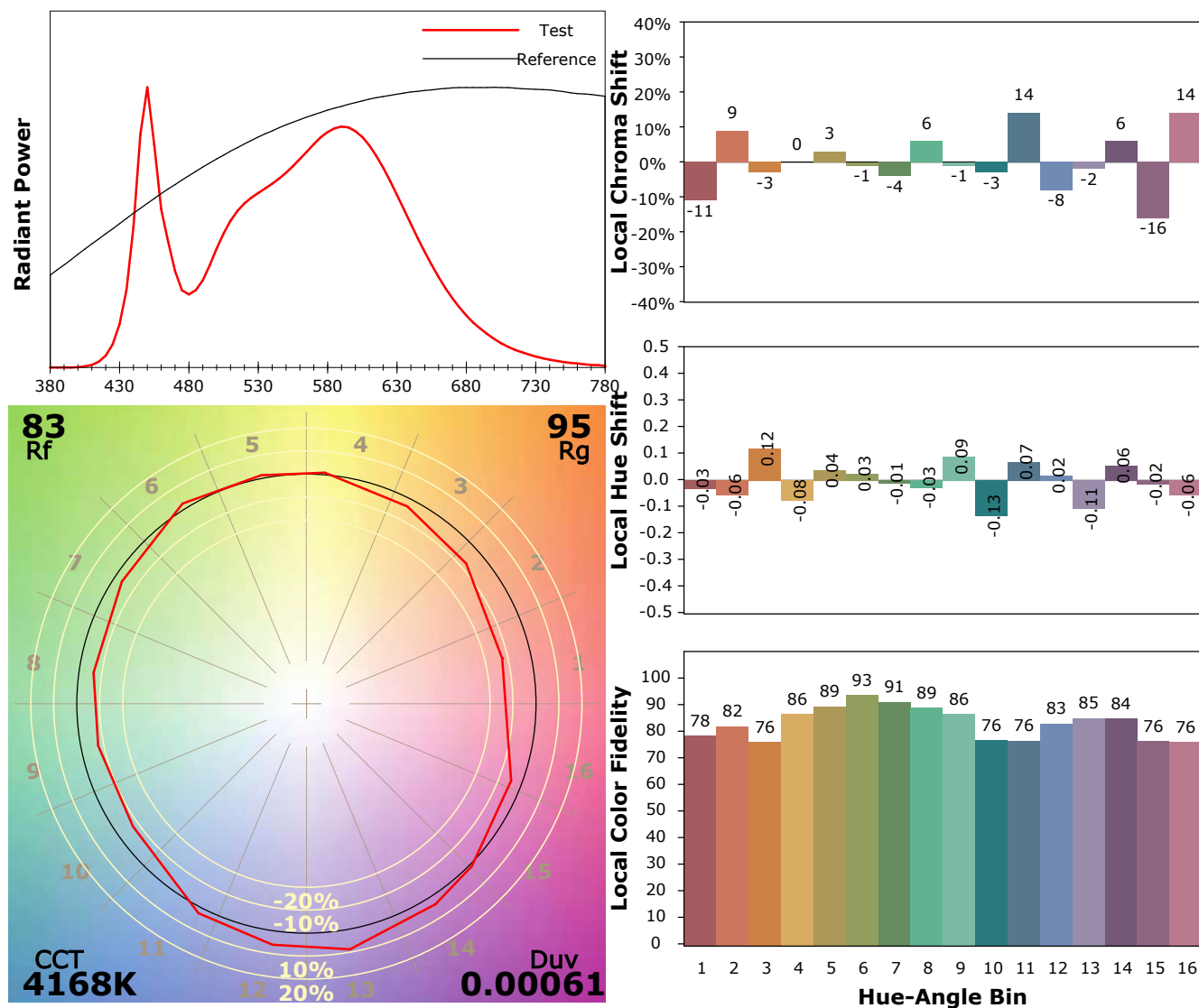
Test Device: Lisun LMS-9000A(Plus)
Test Time: 2022-03-03 16:23:58
Inspector:

IES TM-30-18 Color Rendition Report

Product Information

Product Type: FI 595 IP54 36W 4000K PRISM

Manufacturer: FAROS LED



Condition: Tx:24.3°C, Ti:0.0°C, R.H.:60%

Test Lab: FAROS LED Lab

Operator: Lab

Test Device: Lisun LMS-9000A(Plus)

Test Time: 2022-03-03 16:23:58

Inspector: