

Report No.:

Test Time: 24.02.2022 11:27

Luminaire Property

Luminaire Manufacturer: FAROS LED

Luminaire Category: FT 85 30W CRI80 4000K PI45

Luminous Length (mm): 85

Luminous Width (mm): 85

Luminous Height (mm): 214

Voltage: 221.0 V

Current: 0.147 A

Power: 31.15 W

Power Factor: 0.956

Photometric Results

CIE Class: Direct

Measurement Flux: 3224.4 lm

Downward Ratio: 99%

Total Rated Lamp Lumens: 3224.4 lm

Efficiency: 100%

Upward Ratio: 1%

Field Angle(C0/C180,C90/C270,C45/C225,C135/315): 68.1, 68.0, 68.5, 67.6

Beam Angle(C0/C180,C90/C270,C45/C225,C135/315): 47.2, 47.0, 47.2, 46.9

Luminaire Efficacy Rating (LER): 103.56

Central Intensity: 5412.87 cd

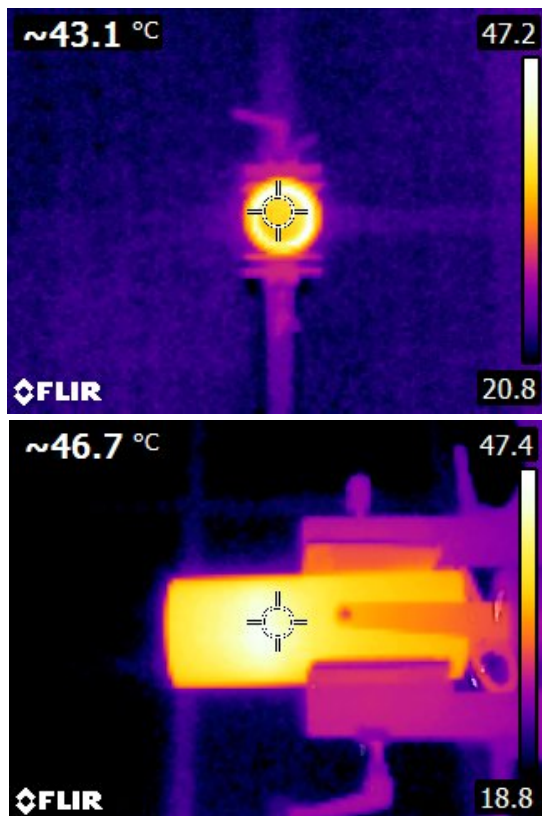
Max. Intensity: 5412.88 cd

Pos of Max. Intensity: H0 V0

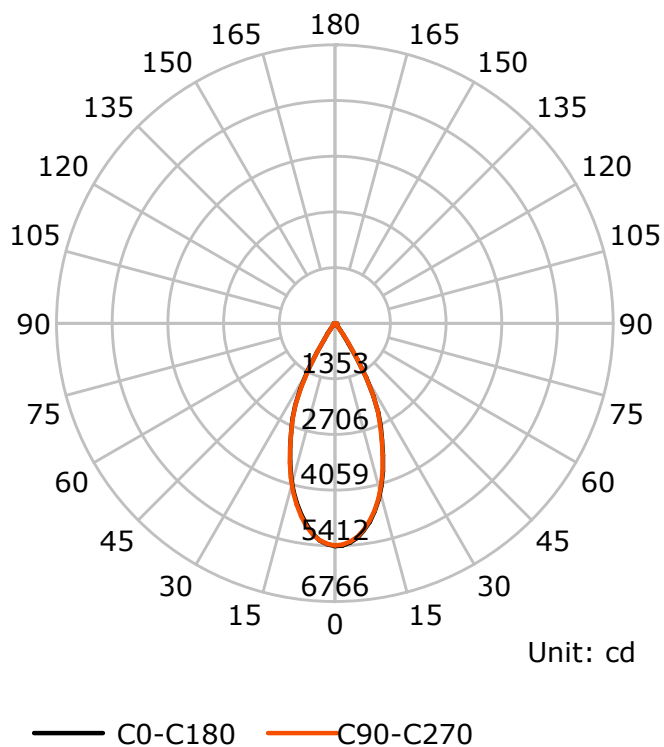
S/MH(C0/C180): 0.74

S/MH(C90/C270): 0.74

Termogramma



Luminous Intensity Distribution Curve



C Plane (°):0.0-360.0: 22.5

Test Lab: FAROS LED Lab

Test Type: TYPE C

Temperature:

Operator: Lab

Gamma Plane (°):0.0-180.0:2.0

Test Device: LSG-1800B

Distance: 12.735 m

Humidity:

Inspector:

Lightsource Test Report

Product Information

Product Type: FT 85 30W CRI80 4000K PI45

Manufacturer: FAROS LED

CIE Colorimetric Parameters

Chromaticity coordinates: $x=0.3748$ $y=0.3728$ $u(u')=0.2230$ $v=0.3327$ $v'=0.4990$

CCT: $T_c=4129K$ ($duv=-0.00019$)

Color Ratio: $R=0.176$ $G=0.789$ $B=0.034$

Peak Wavelength: 447.3nm

Half Bandwidth: 22.5nm

Dominant Wavelength: 578.7nm

Color Purity: 0.244

CRI: $R_a=80.8$, $avgR(1\sim14)=73.7$, $avgR(1\sim15)=73.7$

TM30: $R_f=82$, $R_g=96$

GAI: $GAI_BB_8=93.1$, $GAI_BB_15=98.1$, $GAI_EES=75.3$

$R_1=79$

$R_2=86$

$R_3=92$

$R_4=81$

$R_5=80$

$R_6=82$

$R_7=85$

$R_8=62$

$R_9=-0$

$R_{10}=68$

$R_{11}=80$

$R_{12}=63$

$R_{13}=80$

$R_{14}=96$

$R_{15}=73$

Color Quality Scale: $Q_a=80.8$, $Q_f=80.7$, $Q_p=81.5$, $Q_g=93.0$

$Q_1=81$

$Q_2=98$

$Q_3=77$

$Q_4=75$

$Q_5=81$

$Q_6=82$

$Q_7=84$

$Q_8=88$

$Q_9=97$

$Q_{10}=86$

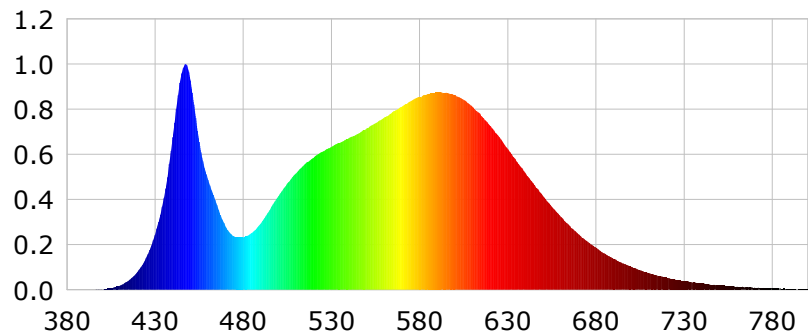
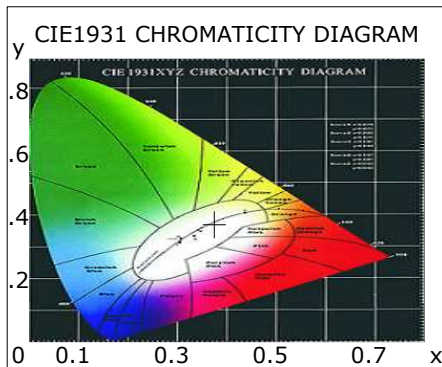
$Q_{11}=82$

$Q_{12}=81$

$Q_{13}=81$

$Q_{14}=69$

$Q_{15}=73$



Photometric Parameters

Luminous Flux:

EEI: 0.00

Efficiency: 0.00 lm/W

Radiant Power: 10.374 W

Energy Efficiency Class: A++ (EU 874-2012)

Electric Parameters

Voltage: 0.0000V

Power Factor: 0.0000

Current: 0.0000A

Frequency: 0.00Hz

Power: 0.00W

Test Information

Scan Range: 380~800:1nm

Stabilization Time: 0 ms ALC.: 1.0000

Max of Signal: 45652 (2948)

Photometric Method: sphere-spectroradiometer

Photometric Condition: Sphere diameter: 1.00m, 4PI

CCD Integration Time: 207.22 ms

Condition: $T_x=22.2^{\circ}C$, $T_i=0.0^{\circ}C$, R.H.:60%

Test Lab: FAROS LED Lab

Operator: Lab

Test Device: Lisun LMS-9000A(Plus)

Test Time: 2022-02-24 12:06:45

Inspector:

Lightsource Test Report

Product Information

Product Type: FT 85 30W CRI80 4000K PI45

Manufacturer: FAROS LED

WL(nm)	PL	PE(mW/nm)	WL(nm)	PL	PE(mW/nm)	WL(nm)	PL	PE(mW/nm)
380	0.0009	0.0605	525	0.6124	41.5372	670	0.2478	16.8086
385	0.0008	0.0548	530	0.6330	42.9312	675	0.2150	14.5821
390	0.0013	0.0856	535	0.6522	44.2344	680	0.1877	12.7292
395	0.0007	0.0456	540	0.6727	45.6279	685	0.1608	10.9030
400	0.0028	0.1903	545	0.6917	46.9147	690	0.1372	9.3070
405	0.0086	0.5861	550	0.7152	48.5058	695	0.1184	8.0315
410	0.0189	1.2817	555	0.7380	50.0546	700	0.1033	7.0084
415	0.0417	2.8267	560	0.7632	51.7621	705	0.0868	5.8893
420	0.0797	5.4033	565	0.7908	53.6351	710	0.0741	5.0287
425	0.1426	9.6728	570	0.8119	55.0666	715	0.0623	4.2259
430	0.2450	16.6139	575	0.8365	56.7329	720	0.0539	3.6576
435	0.4098	27.7940	580	0.8567	58.1067	725	0.0462	3.1327
440	0.6766	45.8919	585	0.8681	58.8804	730	0.0393	2.6637
445	0.9590	65.0462	590	0.8756	59.3858	735	0.0319	2.1652
450	0.9283	62.9623	595	0.8751	59.3504	740	0.0302	2.0466
455	0.6557	44.4743	600	0.8640	58.5984	745	0.0226	1.5312
460	0.4886	33.1367	605	0.8421	57.1184	750	0.0194	1.3149
465	0.3768	25.5590	610	0.8104	54.9629	755	0.0168	1.1362
470	0.2800	18.9920	615	0.7711	52.2975	760	0.0154	1.0433
475	0.2367	16.0571	620	0.7267	49.2851	765	0.0138	0.9355
480	0.2322	15.7473	625	0.6786	46.0285	770	0.0102	0.6906
485	0.2529	17.1507	630	0.6232	42.2700	775	0.0095	0.6431
490	0.2958	20.0652	635	0.5699	38.6542	780	0.0063	0.4268
495	0.3541	24.0152	640	0.5163	35.0191	785	0.0052	0.3501
500	0.4157	28.1936	645	0.4660	31.6070	790	0.0049	0.3343
505	0.4716	31.9837	650	0.4155	28.1823	795	0.0041	0.2788
510	0.5175	35.1000	655	0.3661	24.8330	800	0.0034	0.2285
515	0.5566	37.7486	660	0.3243	21.9990			
520	0.5871	39.8191	665	0.2839	19.2560			

Condition: Tx:22.2'C, Ti:0.0'C, R.H.:60%
Test Lab: FAROS LED Lab
Operator: Lab

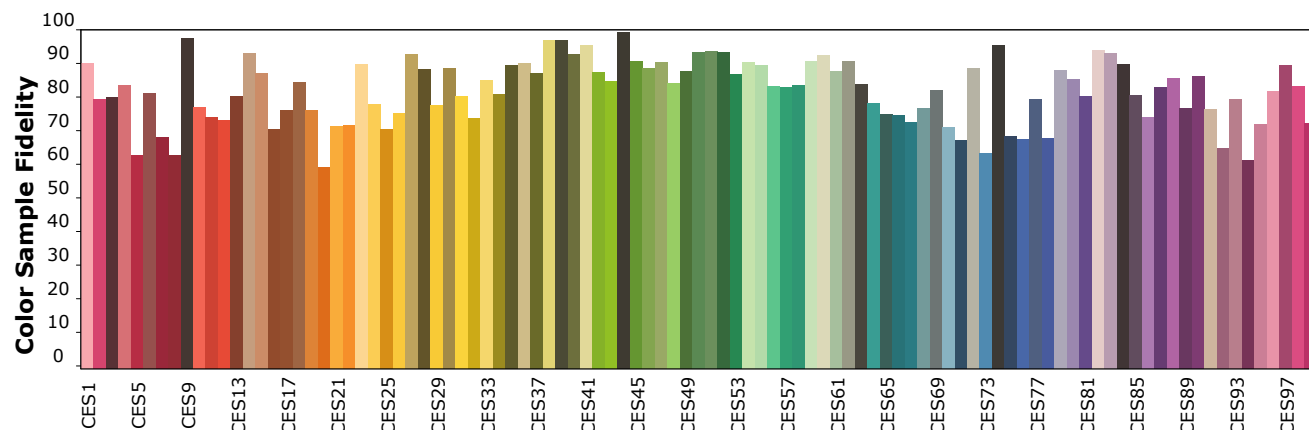
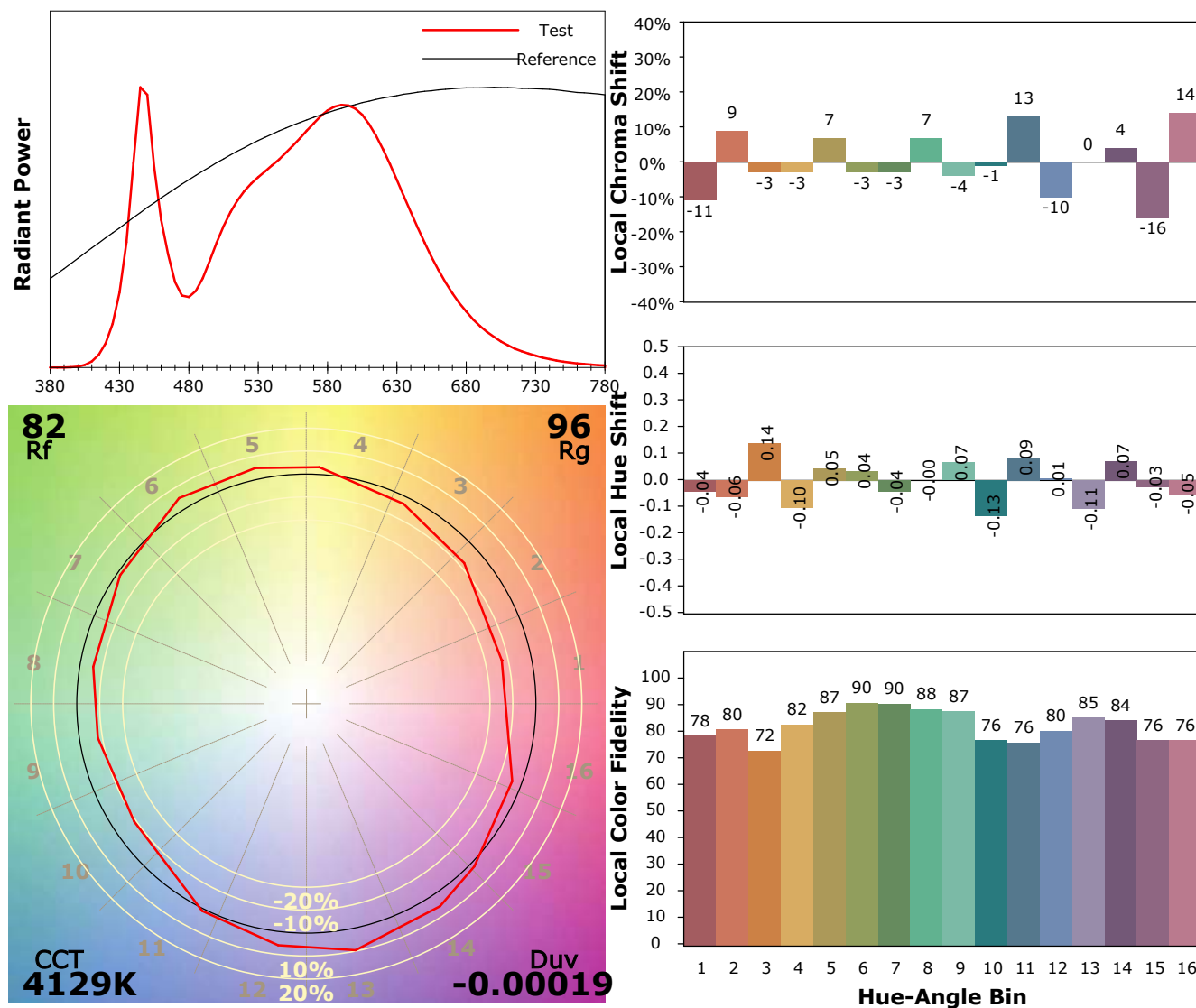
Test Device: Lisun LMS-9000A(Plus)
Test Time: 2022-02-24 12:06:45
Inspector:

IES TM-30-18 Color Rendition Report

Product Information

Product Type: FT 85 30W CRI80 4000K P145

Manufacturer: FAROS LED



Condition: Tx:22.2°C, Ti:0.0°C, R.H.:60%

Test Lab: FAROS LED Lab

Operator: Lab

Test Device: Lisun LMS-9000A(Plus)

Test Time: 2022-02-24 12:06:45

Inspector: